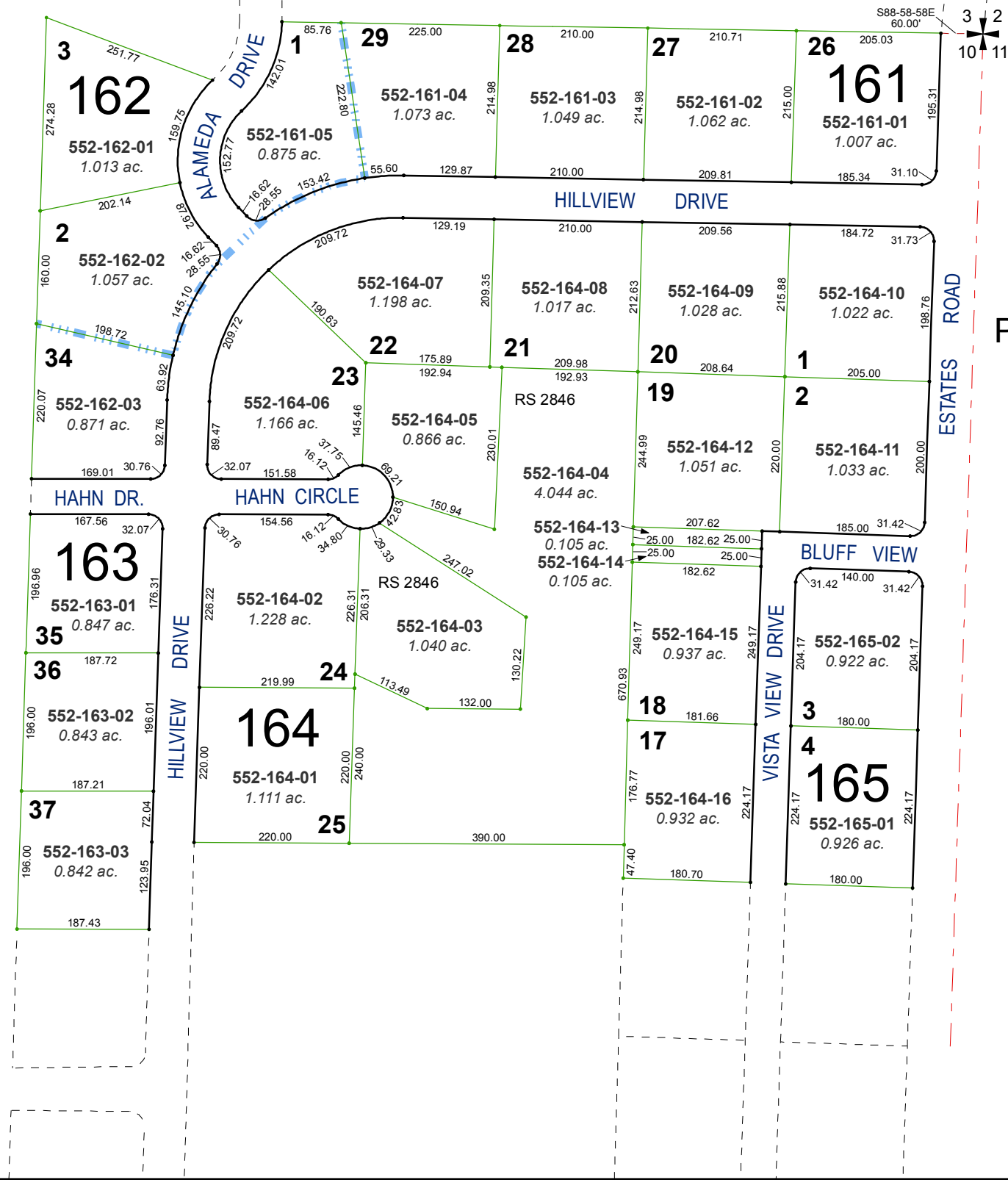


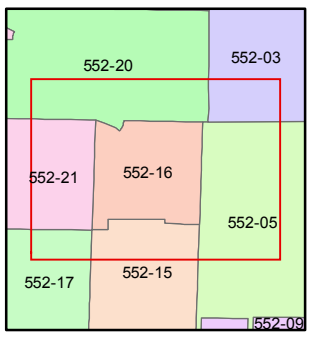
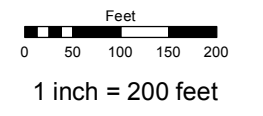
**(#1118)
AMENDED PLAT
LOTS 30,31,32,33**



**(#1049)
MEDALLION ESTATES
PORTION OF UNIT NO. 1
POR. OF THE E 1/2 OF NE 1/4 SEC. 10
T20N - R19E**

Assessor's Map Number
552-16

STATE OF NEVADA
**WASHOE COUNTY
ASSESSOR'S OFFICE**
Joshua G. Wilson, Assessor
1001 East Ninth Street
Building D
Reno, Nevada 89512
(775) 328-2231



created by: EMG 9/02/2014
last updated: _____
area previously shown on map(s)
088-10

NOTE: This map was prepared for the use of the Washoe County Assessor for assessment and illustrative purposes only. It does not represent a survey of the premises. No liability is assumed as to the sufficiency or accuracy of the data delineated hereon.