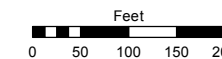
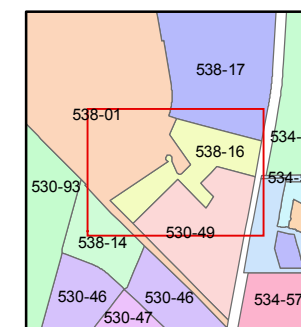
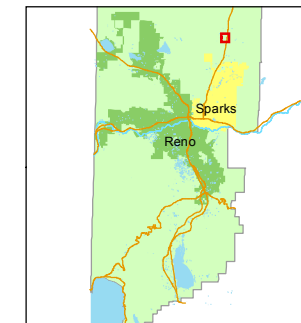


STATE OF NEVADA  
**WASHOE COUNTY**  
**ASSESSOR'S OFFICE**  
Joshua G. Wilson, Assessor

1001 East Ninth Street  
Building D  
Reno, Nevada 89512  
(775) 328-2231



1 inch = 200 feet



created by: KSB 2/18/2010

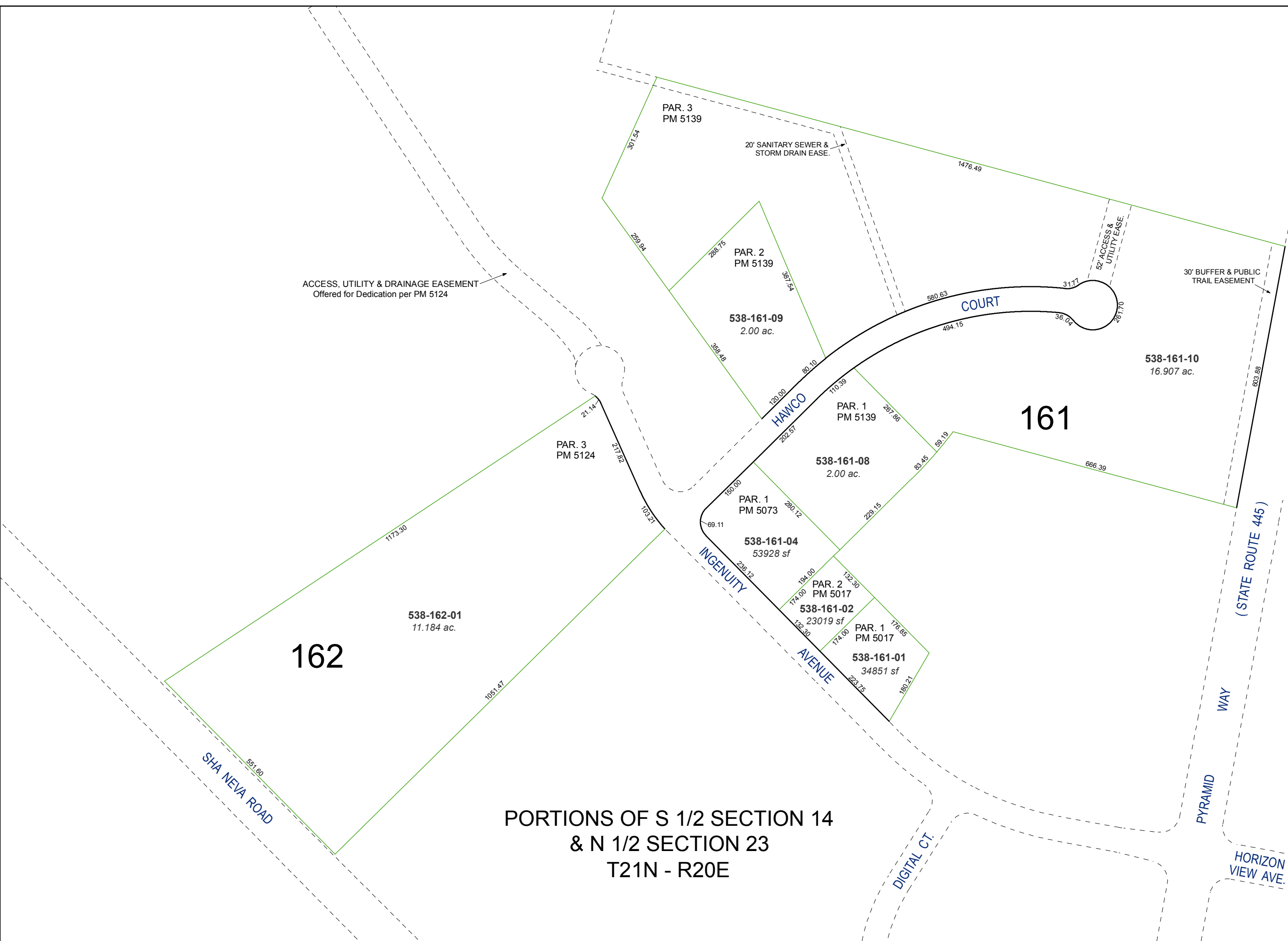
last updated: KSB 11/13/14

area previously shown on map(s)

530-28

NOTE: This map was prepared for the use of the Washoe County Assessor for assessment and illustrative purposes only. It does not represent a survey of the premises. No liability is assumed as to the sufficiency or accuracy of the data delineated hereon.

**PORTIONS OF S 1/2 SECTION 14  
& N 1/2 SECTION 23  
T21N - R20E**



ACCESS, UTILITY & DRAINAGE EASEMENT  
Offered for Dedication per PM 5124

20' SANITARY SEWER &  
STORM DRAIN EASE.

32' ACCESS &  
UTILITY EASE.

30' BUFFER & PUBLIC  
TRAIL EASEMENT

**161**

**162**

SHA NEVA ROAD

HAWCO COURT

INGENUITY AVENUE

AVENUE

DIGITAL CT.

PYRAMID WAY  
(STATE ROUTE 445)

HORIZON VIEW AVE.

PAR. 3  
PM 5139

PAR. 2  
PM 5139

PAR. 1  
PM 5139

PAR. 3  
PM 5124

PAR. 1  
PM 5073

PAR. 2  
PM 5017

PAR. 1  
PM 5017

538-162-01  
11.184 ac.

538-161-09  
2.00 ac.

538-161-08  
2.00 ac.

538-161-04  
53928 sf

538-161-02  
23019 sf

538-161-01  
34851 sf

538-161-10  
16.907 ac.

301.54

289.94

288.75

387.54

358.48

21.14

217.82

103.21

1173.30

1051.47

289.94

288.75

580.63

1476.49

317.7

287.70

494.15

36.04

603.88

666.39

69.11

150.00

280.12

229.15

89.45

89.19

236.12

194.00

132.30

174.00

174.00

176.85

222.25

180.21