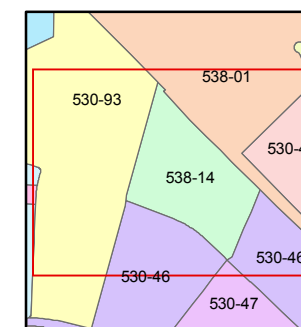
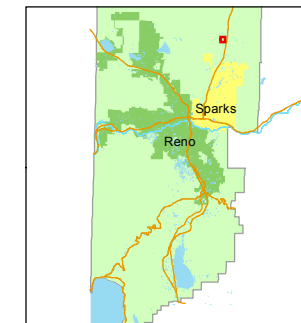


1 inch = 200 feet



created by: KSB 10/22/2013

last updated: _____

area previously shown on map(s)

530-46

PORTION OF NW 1/4 SECTION 23 T21N - R20E

15 14
22 23

PAR. D
PM 4659
538-141-23
2.295 ac.

POR. PAR. 2
PM 4508

538-141-24
3.629 ac.

141

PAR. 3
PM 4507

538-141-19
65342 sf

PAR. 3
PM 4506

538-141-12
43564 sf

PAR. 2
PM 4506

538-141-13
43560 sf

PAR. 1
PM 4506

538-141-14
65340 sf

PAR. 2
PM 4507

538-141-17
65339 sf

PAR. 1
PM 4507

538-141-16
43559 sf

PAR. C
PM 4371

538-141-07
43563 sf

PAR. 1
PM 4328

538-141-03
43560 sf

PAR. 2
PM 4328

538-141-02
50529 sf

PAR. A
PM 4371

538-141-05
2.000 ac.

PAR. 1
PM 4505

538-141-11
47594 sf

PAR. 2
PM 4505

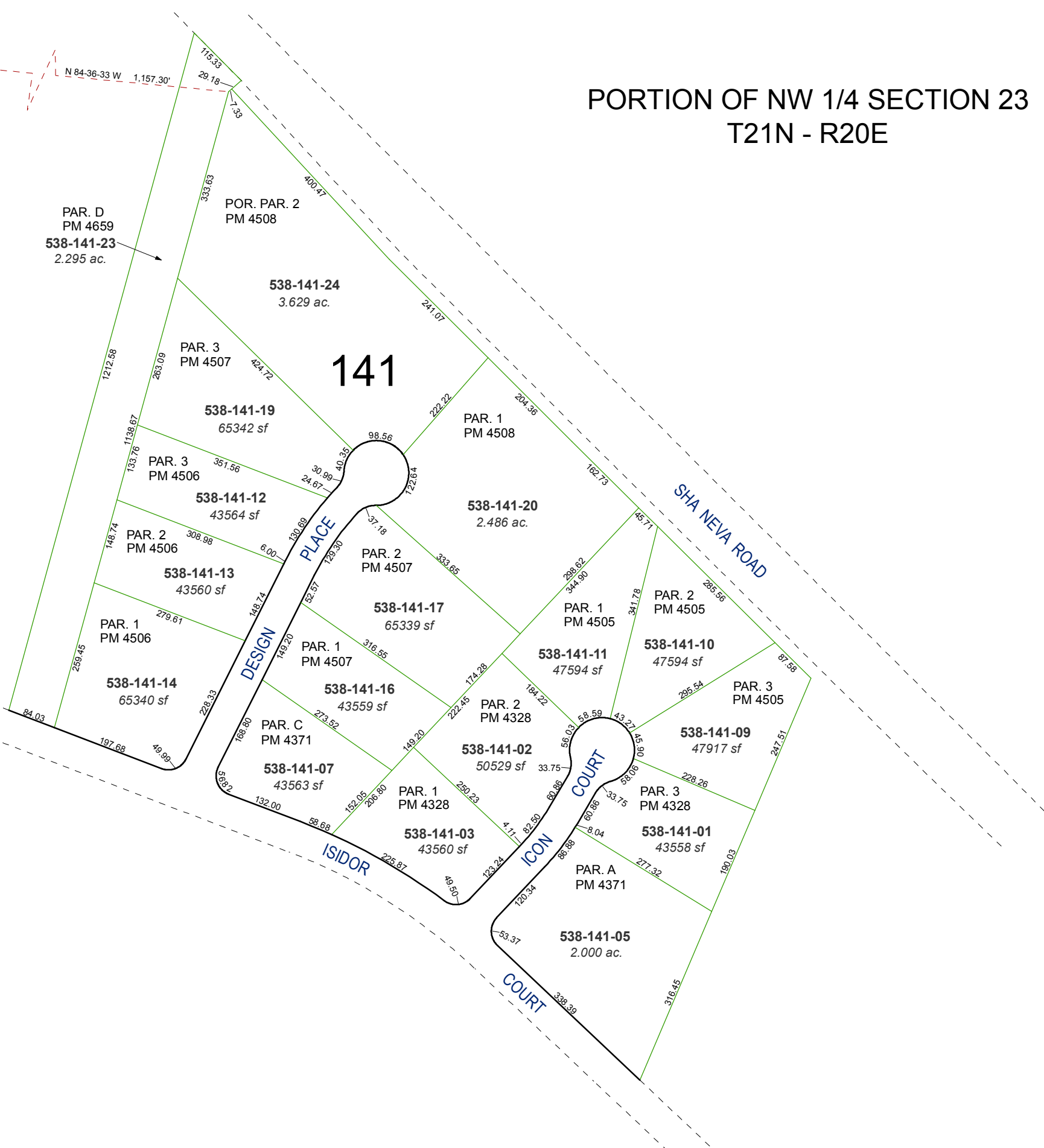
538-141-10
47594 sf

PAR. 3
PM 4505

538-141-09
47917 sf

PAR. 3
PM 4328

538-141-01
43558 sf



NOTE: This map was prepared for the use of the Washoe County Assessor for assessment and illustrative purposes only. It does not represent a survey of the premises. No liability is assumed as to the sufficiency or accuracy of the data delineated herein.