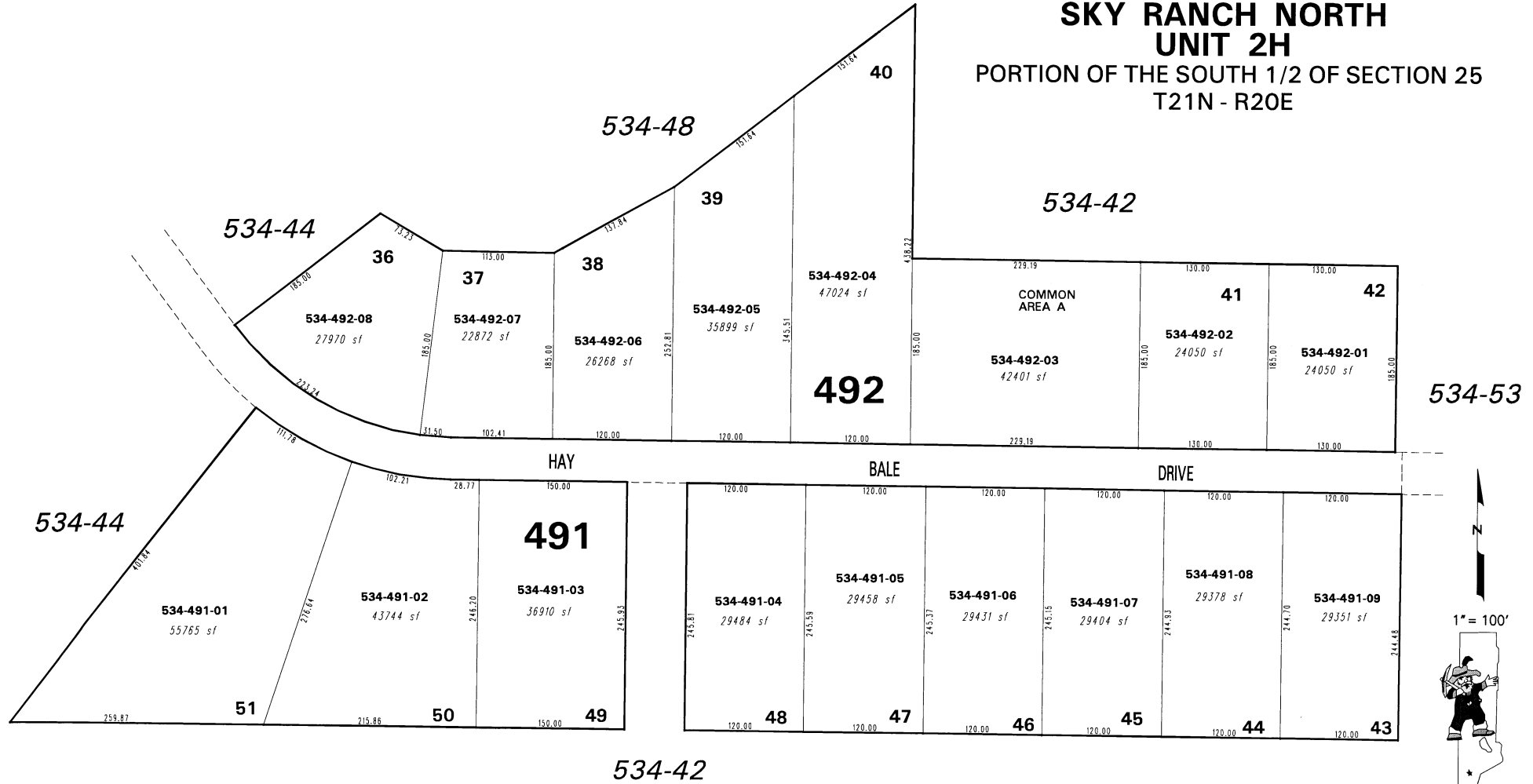


(#4456)
**SKY RANCH NORTH
UNIT 2H**
PORTION OF THE SOUTH 1/2 OF SECTION 25
T21N - R20E



NOTE: This map is prepared for the use of the Washoe County Assessor for assessment and illustrative purposes only. It does not represent a survey of the premises. No liability is assumed as to the sufficiency or the accuracy of the data delineated hereon.

Office of Washoe County Assessor, Nevada - Joshua G. Wilson

This area previously shown on 534-29 & 534-42

NOTE: Areas of parcels which are less than 2 acres are shown in square feet.

Drawn by PK 04/20/05
 Revised PK 7/17/06 NLH 5/09/08

ARC/INFO 9.1 WINDOWS 2000 5.0