

534-45

HORIZON VIEW AVENUE

HORIZON RIDGE RD.

SHADY VALLEY ROAD

SR 445

PYRAMID WAY

**(#4827)
DONOVAN RANCH
PHASE - 2B**

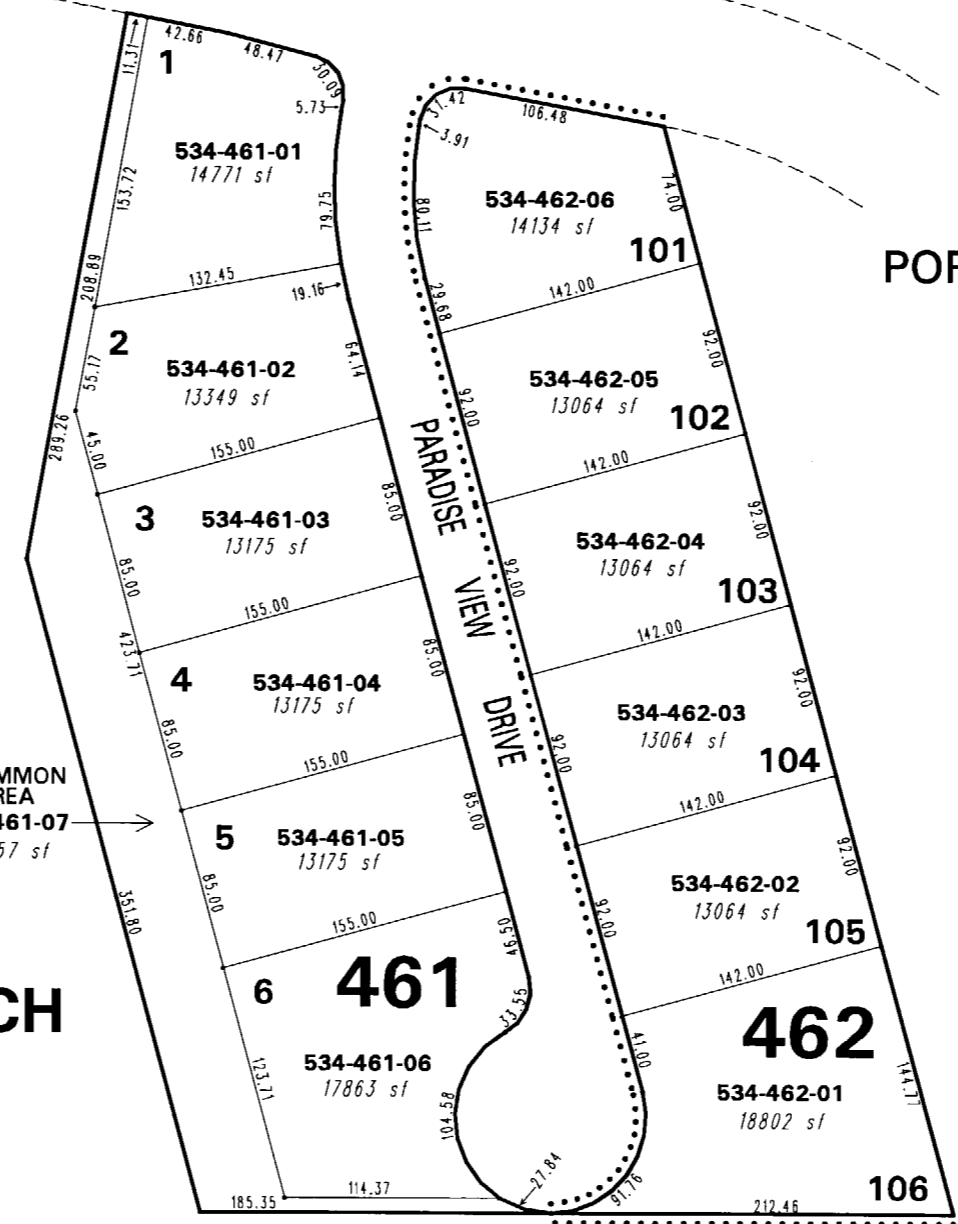
PORTIONS OF SECTIONS 23 & 24
T21N - R20E

534-45

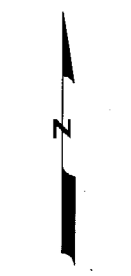
534-45

**(#4401)
DONOVAN RANCH
PHASE - 1**

COMMON
AREA
534-461-07
21357 sf



076-40



1" = 100'



NOTE: This map is prepared for the use of the Washoe County Assessor for assessment and illustrative purposes only. It does not represent a survey of the premises. No liability is assumed as to the sufficiency or the accuracy of the data delineated hereon.

Office of Washoe County Assessor, Nevada - Joshua G. Wilson

This area previously shown on 076-40

NOTE: Areas of parcels which are less than 2 acres are shown in square feet.

Drawn by	PK 11/02/04
Revised	PK 4/26/05 NLH 01/25/07
	NLH 9/21/07 NLH 10/16/07