

534-42

**COMMON  
AREA C**

534-410-02  
5.408 ac.

534-48

534-04

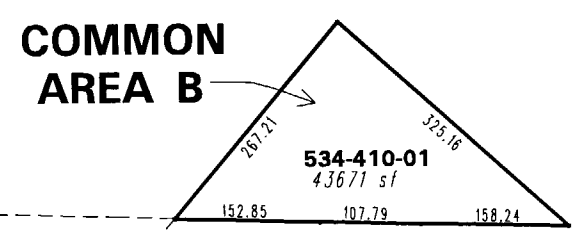
534-01

534-02

**(#3925)**

**SKY RANCH NORTH - UNIT 2F**

PORTIONS OF THE SW1/4 OF SEC. 25  
AND THE NW1/4 OF SEC. 36,  
T21N - R20E



**COMMON  
AREA B**

534-410-01  
4,367.71 sf

SUNSET SPRINGS LANE

534-43



534-40

NOTE: This map is prepared for the use of the Washoe County Assessor for assessment and illustrative purposes only. It does not represent a survey of the premises. No liability is assumed as to the sufficiency or the accuracy of the data delineated hereon.

Office of Washoe County Assessor, Nevada - Robert W. McGowan

This area previously shown on 534-29

NOTE: Areas of parcels which are less than 2 acres are shown in square feet.

Drawn by	HCS 3/28/01
Revised	PK 12/1/04 PK 4/26/05

