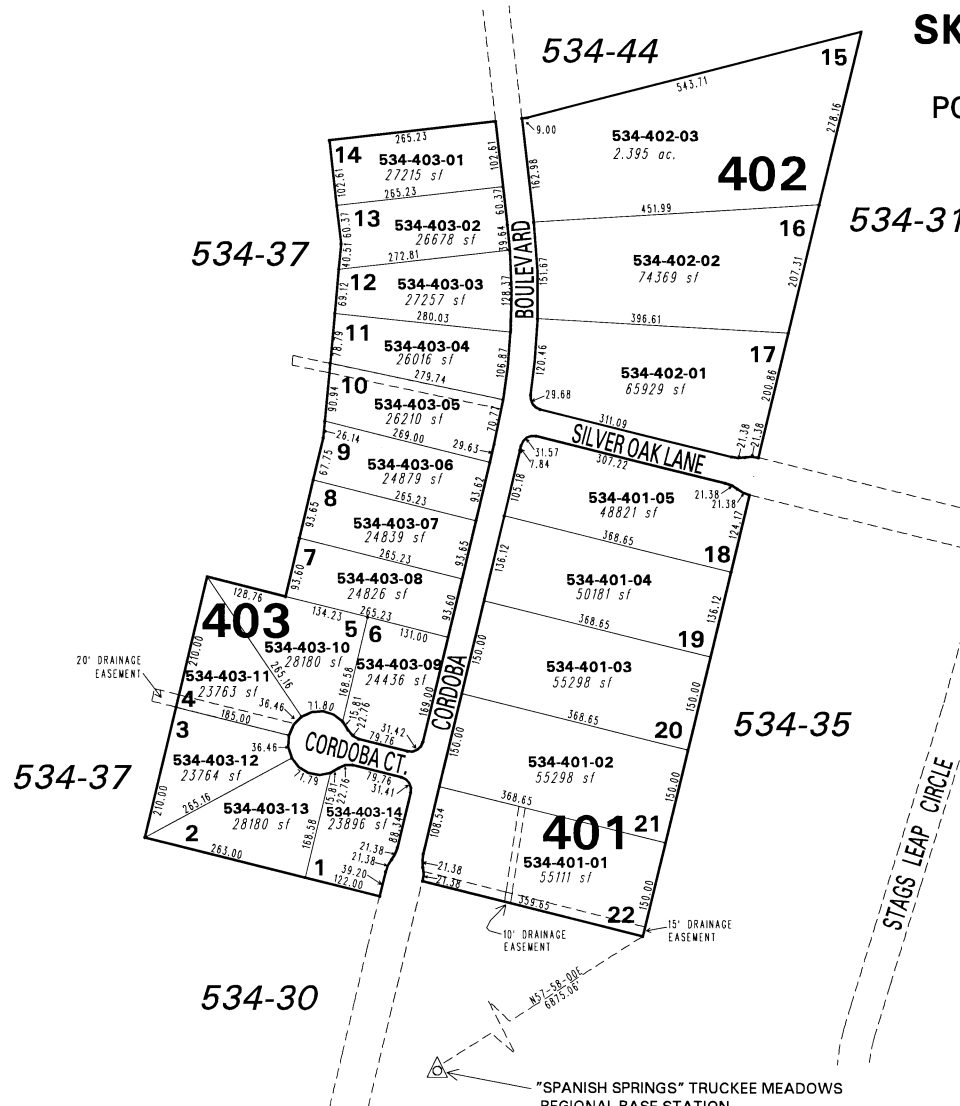


(#3925)

SKY RANCH NORTH - UNIT 2F

PORTIONS OF THE SW1/4 OF SEC. 25
AND THE NW1/4 OF SEC. 36,
T21N - R20E



NOTE: This map is prepared for the use of the Washoe County Assessor for assessment and illustrative purposes only. It does not represent a survey of the premises. No liability is assumed as to the sufficiency or the accuracy of the data delineated hereon.

Office of Washoe County Assessor, Nevada - Joshua G. Wilson

This area previously shown on 534-29

NOTE: Areas of parcels which are less than 2 acres are shown in square feet.

Drawn by	HCS 3/28/01
Revised	HCS 4/12/02 PK 11/30/04
	NLH 5/09/08