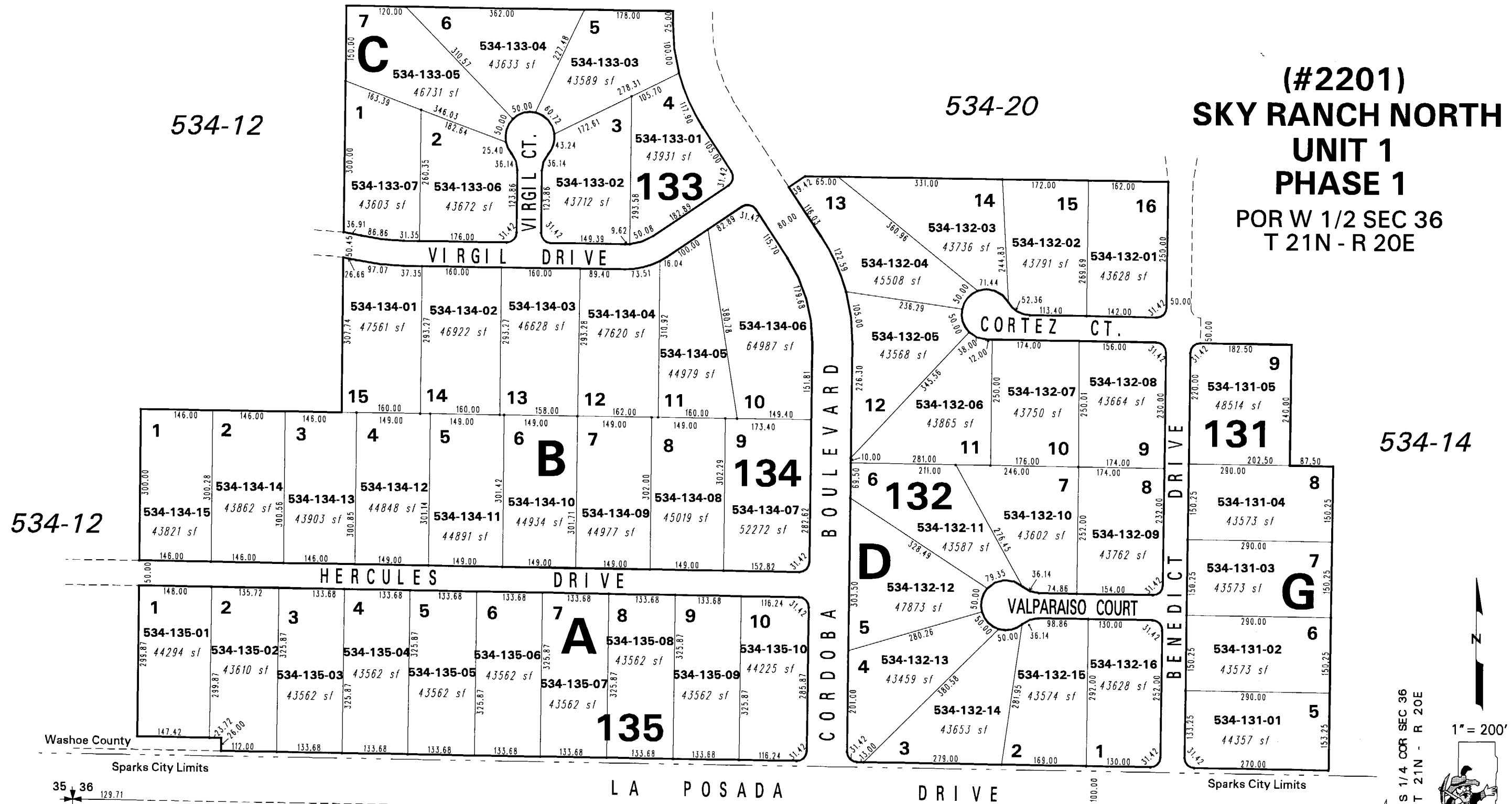


(#2201)
SKY RANCH NORTH
UNIT 1
PHASE 1
POR W 1/2 SEC 36
T 21N - R 20E



534-12

534-20

534-14

BOOK 528

BOOK 54

La Posada Dr. Annexed to City
of Sparks per Annex. TM 4169

Office of Washoe County Assessor, Nevada - Robert W. McGowan

NOTE: This map is prepared for the use of the Washoe County Assessor for assessment and illustrative purposes only. It does not represent a survey of the premises. No liability is assumed as to the sufficiency or the accuracy of the data delineated hereon.

This area previously shown on 76-67

NOTE: Areas of parcels which are less than 2 acres are shown in square feet.

Drawn by RM 05/17/94
 Revised 9/95 8/96 KSB 5/01/03
 KSB 5/11/06

