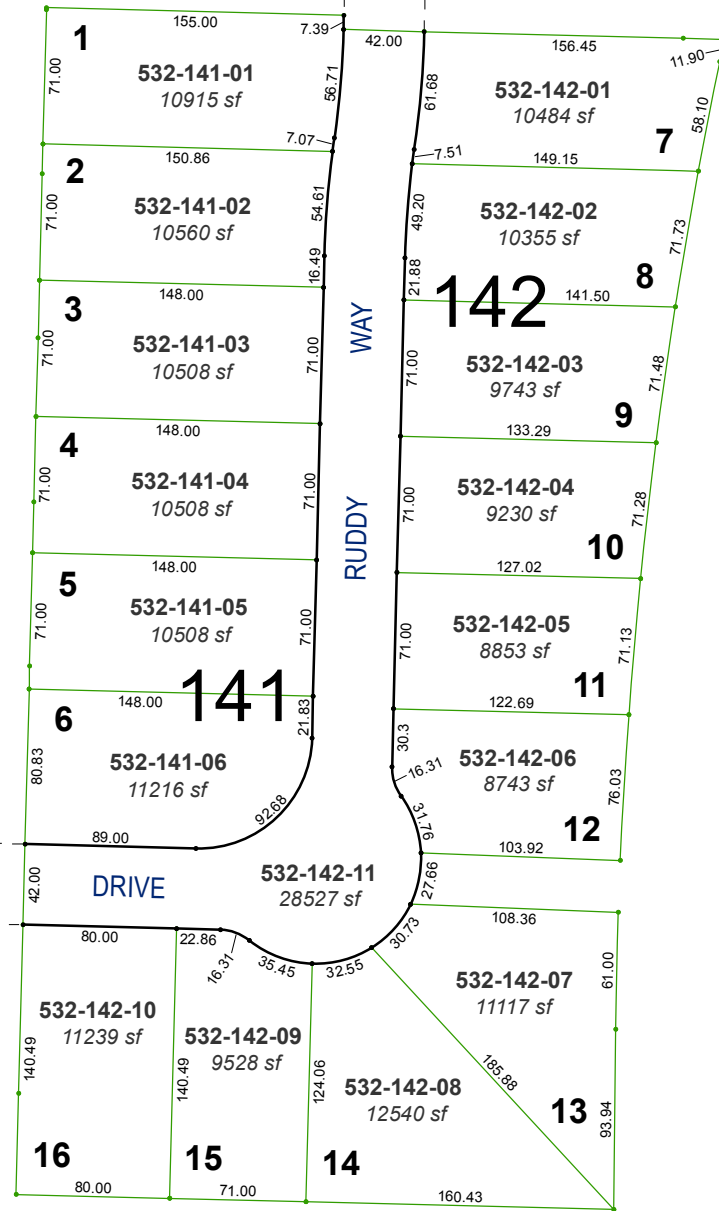


LAUGHING CHUKAR LANE

ROBIN DRIVE

ROCKIN DRIVE

KINGLET DRIVE



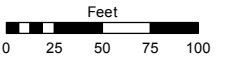
(#5124)
EAGLE CANYON RANCH - UNIT 1
 PORTION OF NE ¼ SECTION 27
 T21N - R20E

Assessor's Map Number

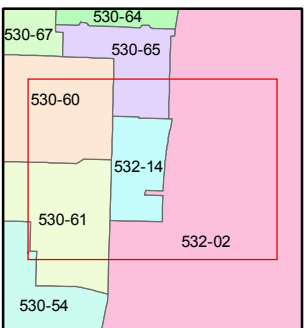
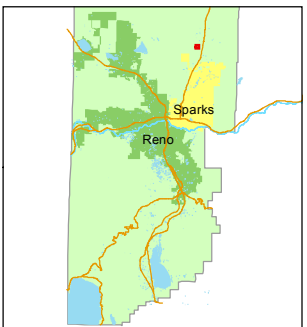
532-14

STATE OF NEVADA
WASHOE COUNTY
 ASSESSOR'S OFFICE
 Michael E. Clark, Assessor

1001 East Ninth Street
 Building D
 Reno, Nevada 89512
 (775) 328-2231



1 inch = 100 feet



created by: KSB 7/06/2015

last updated: _____

area previously shown on map(s)

532-02

NOTE: This map was prepared for the use of the Washoe County Assessor for assessment and illustrative purposes only. It does not represent a survey of the premises. No liability is assumed as to the sufficiency or accuracy of the data delineated hereon.