

BOOK 530

(#4485)

# EAGLE CANYON IV - UNIT 1

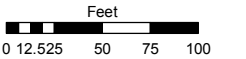
PORTIONS OF THE SE ¼ OF SEC. 22,  
AND THE W ½ OF SEC. 23,  
T21N - R20E

Assessor's Map Number

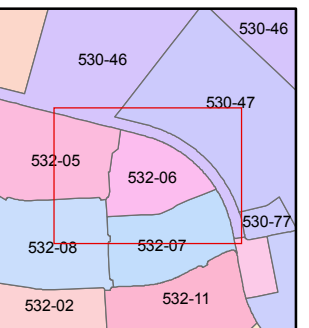
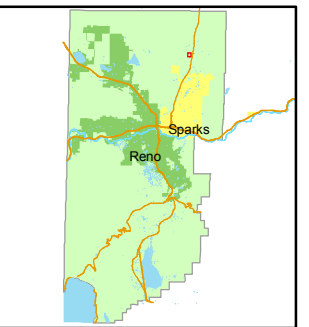
**532-06**

STATE OF NEVADA  
**WASHOE COUNTY**  
ASSESSOR'S OFFICE  
Joshua G. Wilson, Assessor

1001 East Ninth Street  
Building D  
Reno, Nevada 89512  
(775) 328-2231



1 inch = 100 feet



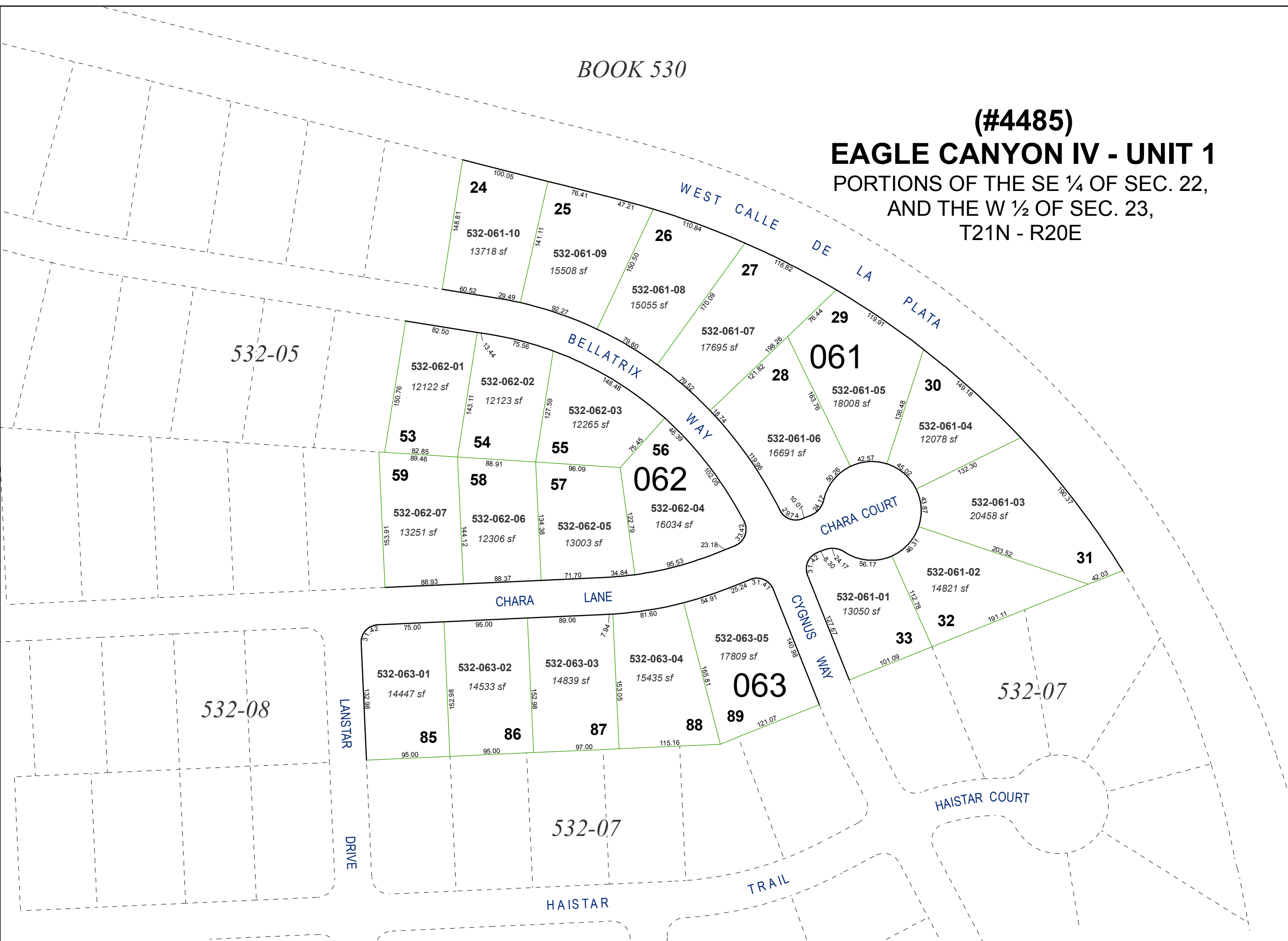
created by: NLH 6/25/2010

last updated: \_\_\_\_\_

area previously shown on map(s)

530-28

NOTE: This map was prepared for the use of the Washoe County Assessor for assessment and illustrative purposes only. It does not represent a survey of the premises. No liability is assumed as to the sufficiency or accuracy of the data delineated hereon.



532-05

532-08

532-07

532-07