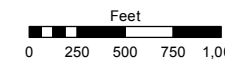


Assessor's Map Number

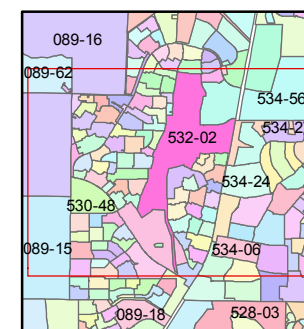
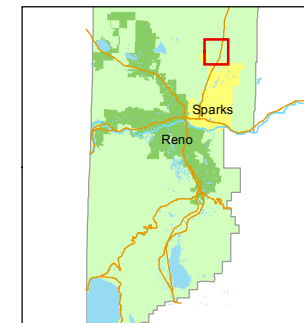
532-02

STATE OF NEVADA
WASHOE COUNTY
ASSESSOR'S OFFICE
Michael E. Clark, Assessor

1001 East Ninth Street
Building D
Reno, Nevada 89512
(775) 328-2231



1 inch = 1,000 feet



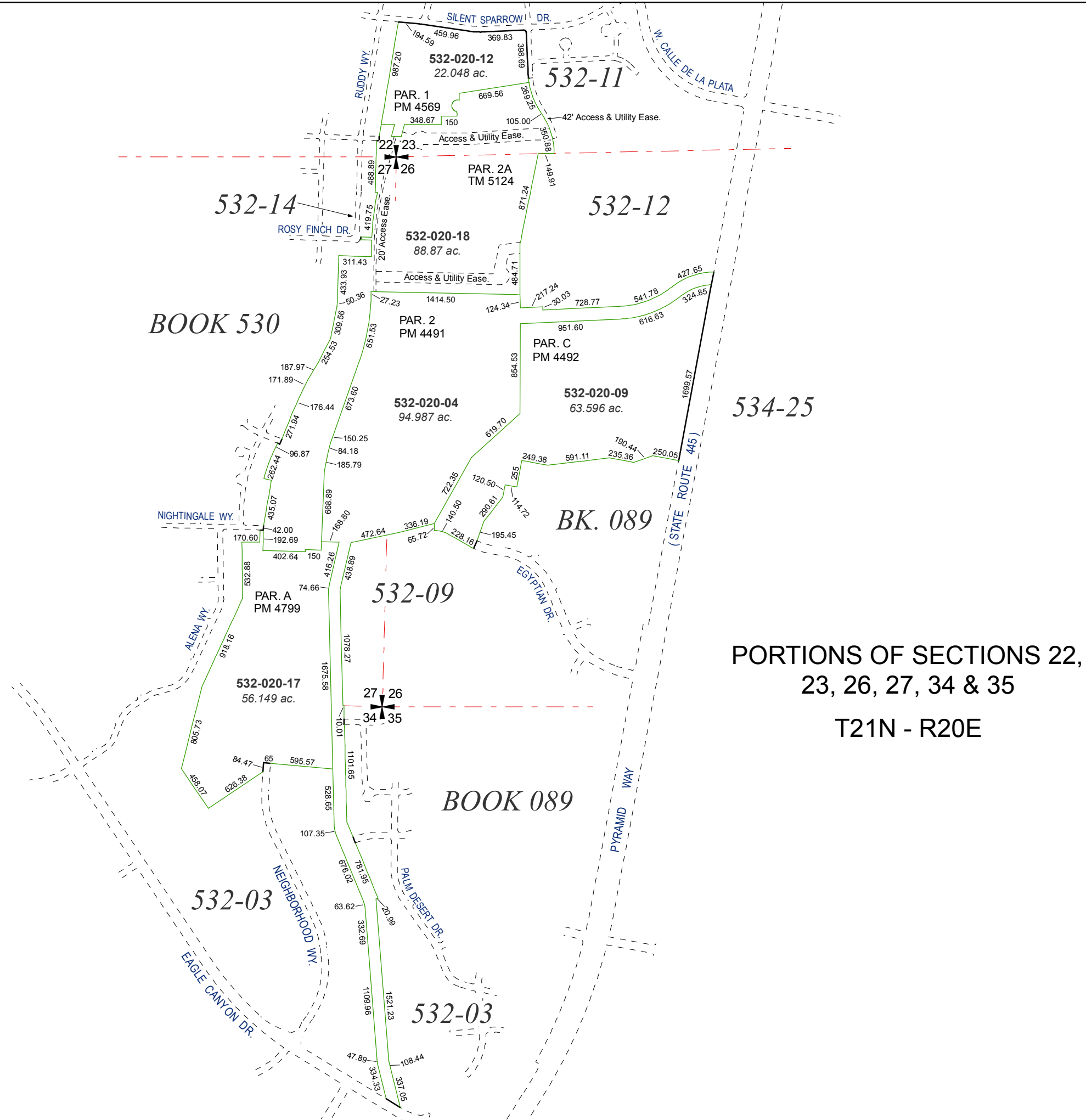
created by: KSB 10/30/2013

last updated: KSB 7/06/15

area previously shown on map(s)

530-28, 089-16

NOTE: This map was prepared for the use of the Washoe County Assessor for assessment and illustrative purposes only. It does not represent a survey of the premises. No liability is assumed as to the sufficiency or accuracy of the data delineated hereon.



PORTIONS OF SECTIONS 22,
23, 26, 27, 34 & 35
T21N - R20E