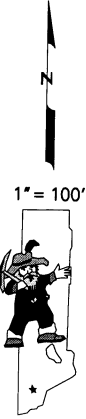
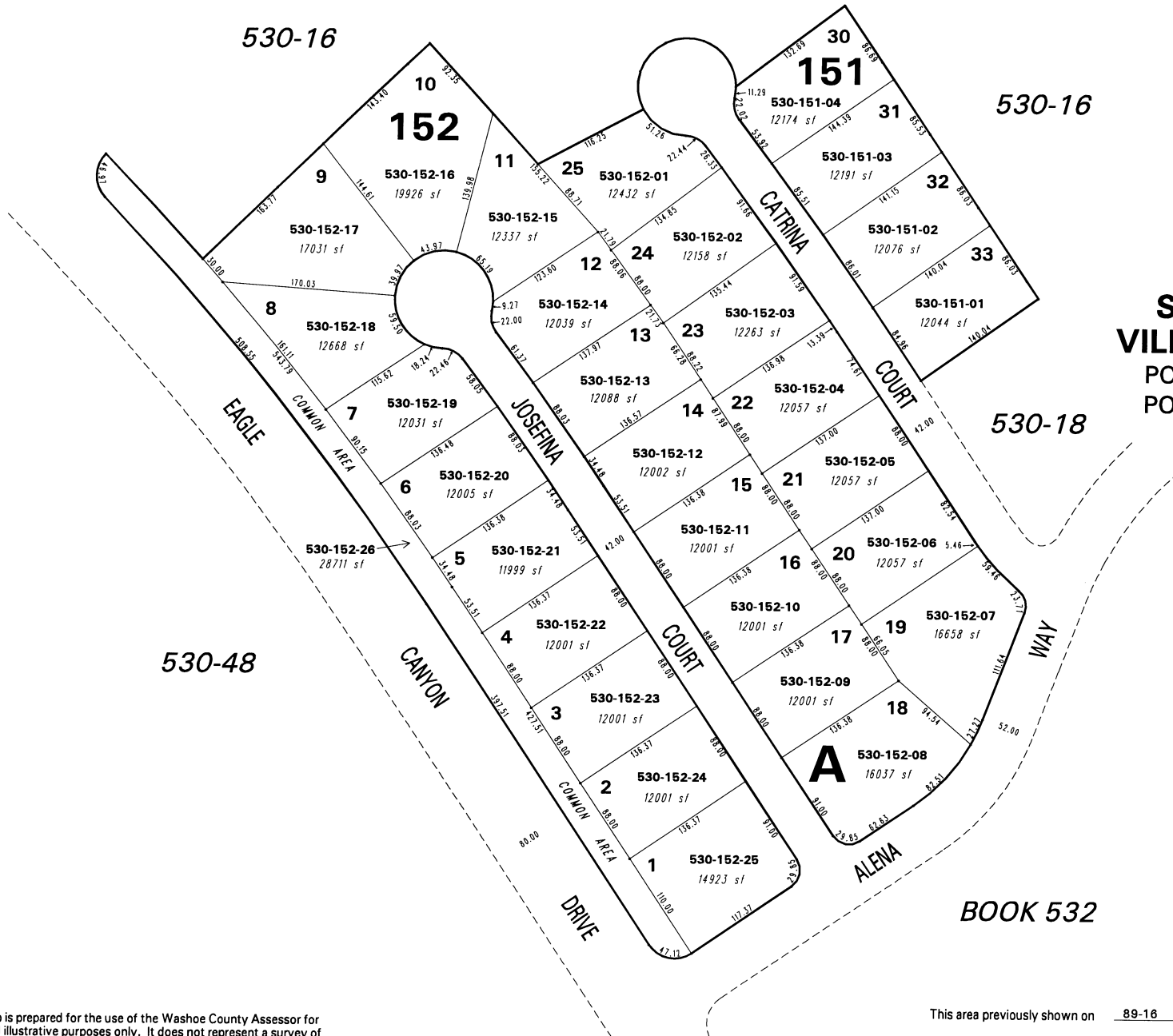


**(#3253)
SPANISH SPRINGS
VILLAGE NORTH UNIT-1**
PORTION S 1/2 SECTION 27
PORTION N 1/2 SECTION 34
T21N - R20E



NOTE: This map is prepared for the use of the Washoe County Assessor for assessment and illustrative purposes only. It does not represent a survey of the premises. No liability is assumed as to the sufficiency or the accuracy of the data delineated hereon.

Office of Washoe County Assessor, Nevada - Robert W. McGowan

This area previously shown on 89-16

NOTE: Areas of parcels which are less than 2 acres are shown in square feet.

Drawn by	KL 8/14/96
Revised	1/22/98 TJF TWT 1/26/01
	KSB 1/31/03