

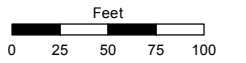
(#5003)
PIONEER MEADOWS VILLAGE 7B & C
PHASE 1
 A PORTION OF SECTION 11
 T20N - R20E

Assessor's Map Number

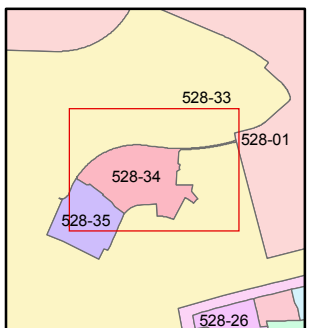
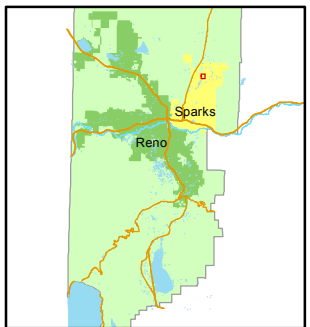
528-34

STATE OF NEVADA
WASHOE COUNTY
ASSESSOR'S OFFICE
 Joshua G. Wilson, Assessor

1001 East Ninth Street
 Building D
 Reno, Nevada 89512
 (775) 328-2231



1 inch = 100 feet



created by: NLH 12/30/2011

last updated: _____

area previously shown on map(s)

528-01

NOTE: This map was prepared for the use of the Washoe County Assessor for assessment and illustrative purposes only. It does not represent a survey of the premises. No liability is assumed as to the sufficiency or accuracy of the data delineated herein.

NOTES
 C.A. = COMMON AREA
 ALL STREETS ARE PRIVATE

