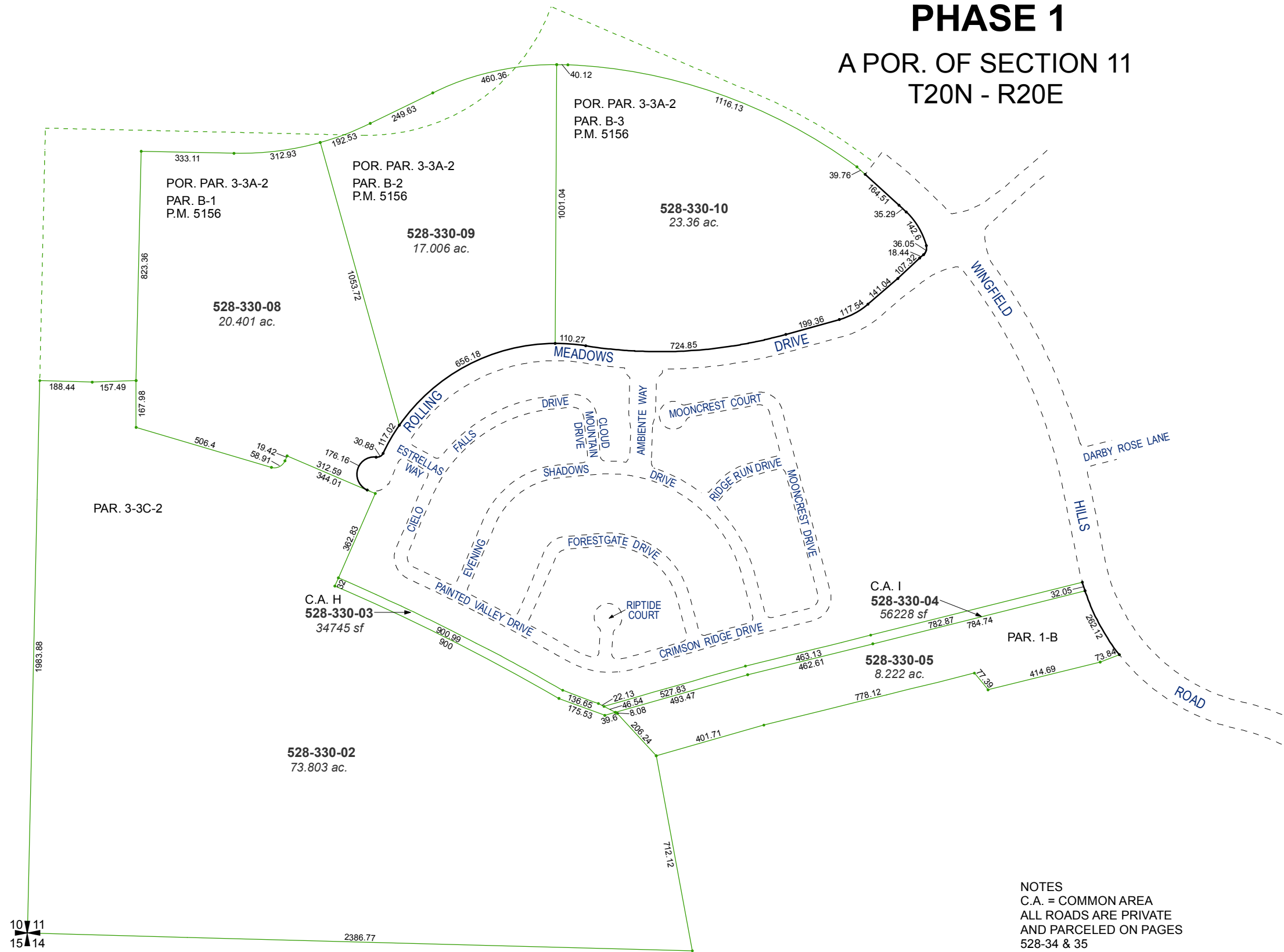


(#5003) PIONEER MEADOWS VILLAGE 7B & C PHASE 1

A POR. OF SECTION 11
T20N - R20E



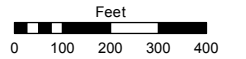
NOTES
C.A. = COMMON AREA
ALL ROADS ARE PRIVATE
AND PARCELED ON PAGES
528-34 & 35

10
15

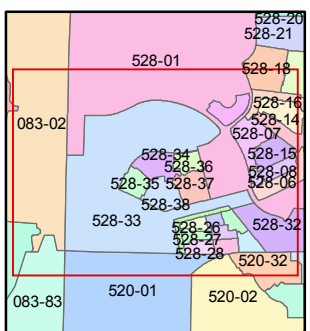
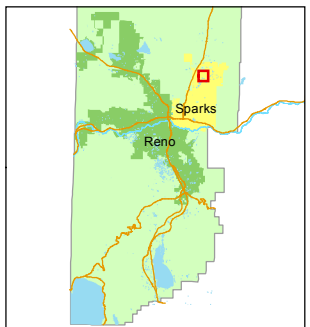
Assessor's Map Number
528-33

STATE OF NEVADA
WASHOE COUNTY
ASSESSOR'S OFFICE
Michael E. Clark, Assessor

1001 East Ninth Street
Building D
Reno, Nevada 89512
(775) 328-2231



1 inch = 400 feet



created by: NLH 12/30/2011

last updated: EMG 4/28/15 EMG 5/13/15

area previously shown on map(s)

528-01

NOTE: This map was prepared for the use of the Washoe County Assessor for assessment and illustrative purposes only. It does not represent a survey of the premises. No liability is assumed as to the sufficiency or accuracy of the data delineated hereon.