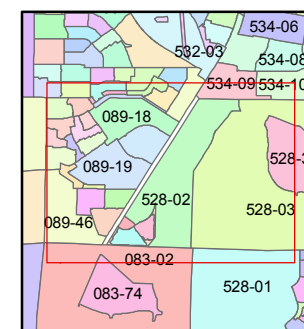
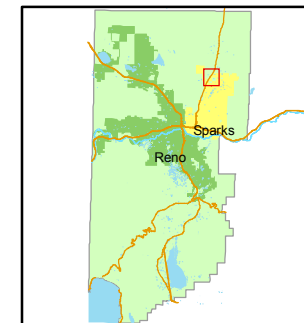


1 inch = 600 feet



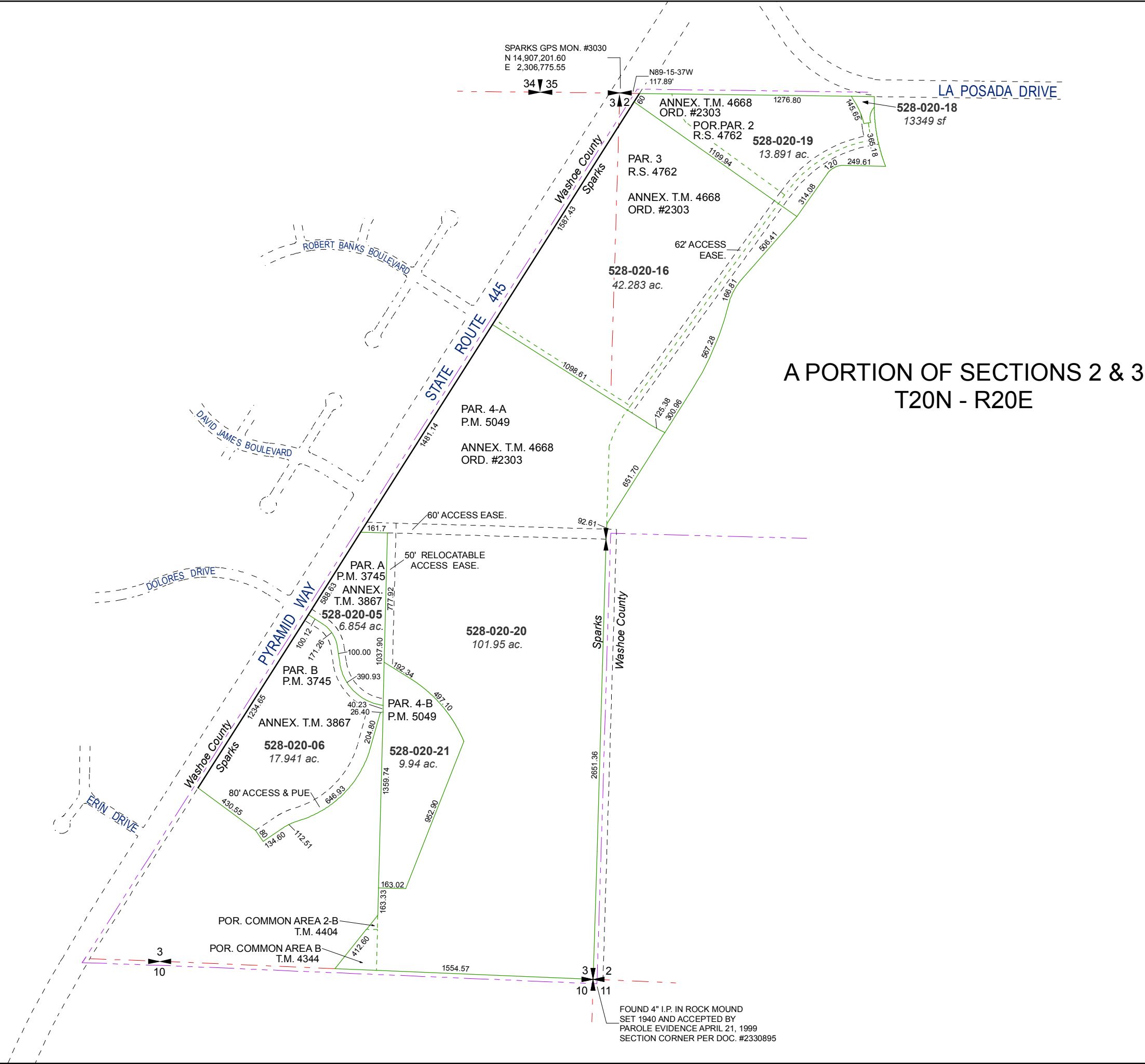
created by: TWT 11/12/2009

last updated: KSB 7/16/10 NLH 6/27/11

area previously shown on map(s)

083-02

NOTE: This map was prepared for the use of the Washoe County Assessor for assessment and illustrative purposes only. It does not represent a survey of the premises. No liability is assumed as to the sufficiency or accuracy of the data delineated herein.



**A PORTION OF SECTIONS 2 & 3
T20N - R20E**

FOUND 4" I.P. IN ROCK MOUND
SET 1940 AND ACCEPTED BY
PAROLE EVIDENCE APRIL 21, 1999
SECTION CORNER PER DOC. #2330895