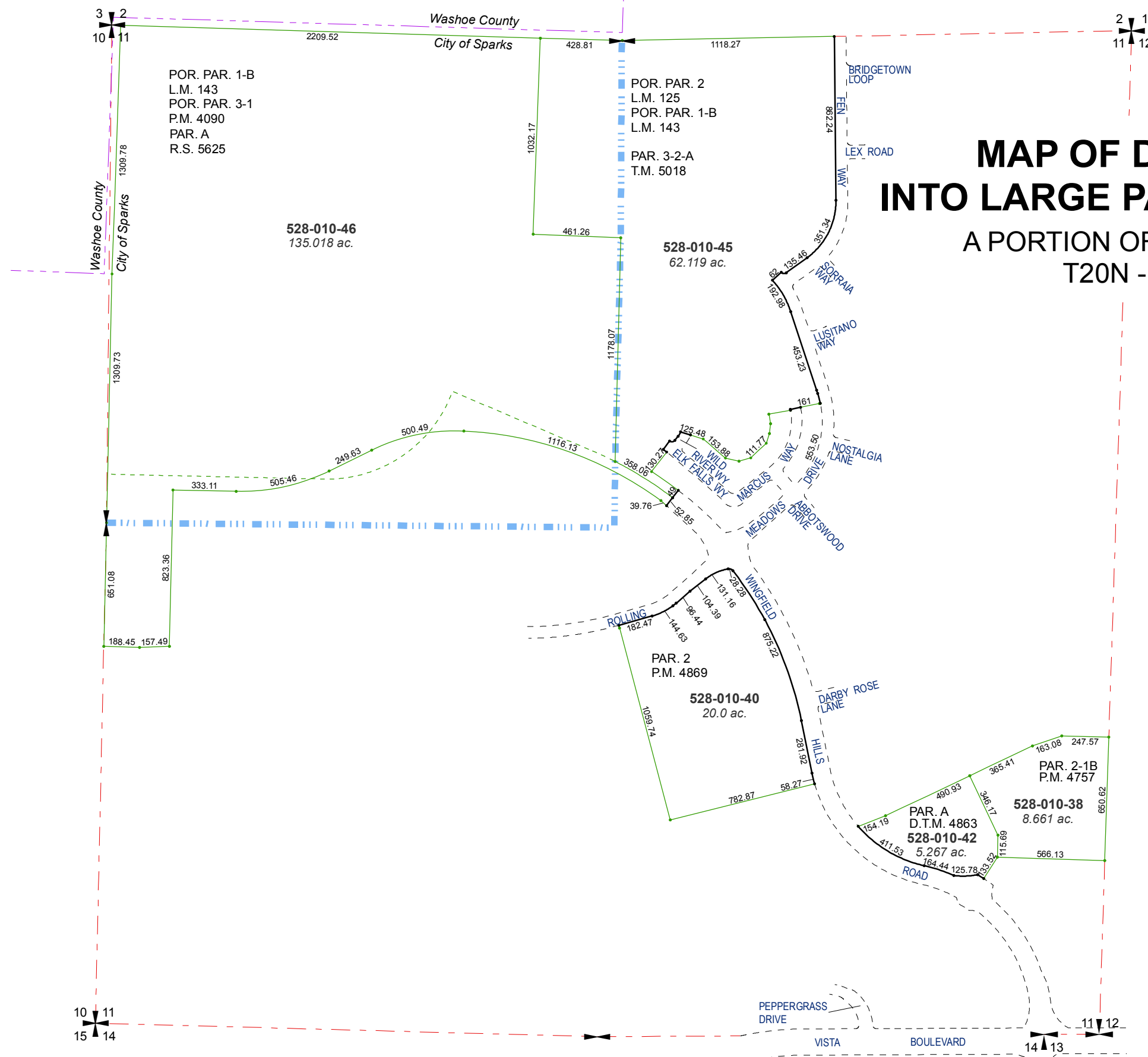


MAP OF DIVISION INTO LARGE PARCELS #143



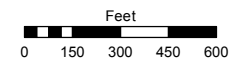
MAP OF DIVISION INTO LARGE PARCELS #125

A PORTION OF SECTION 11
T20N - R20E

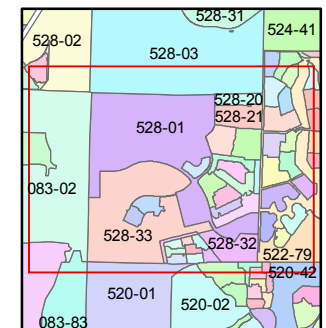
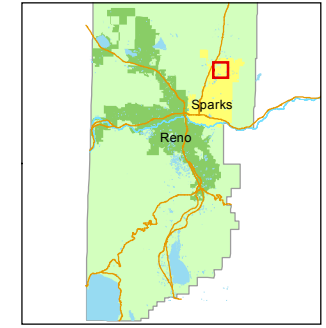
Assessor's Map Number
528-01

STATE OF NEVADA
WASHOE COUNTY
ASSESSOR'S OFFICE
Michael E. Clark, Assessor

1001 East Ninth Street
Building D
Reno, Nevada 89512
(775) 328-2231



1 inch = 600 feet



created by: NLH 01/04/2012

last updated: NLH 6/29/12 EMG 4/13/15

area previously shown on map(s)

083-02, 528-33

NOTE: This map was prepared for the use of the Washoe County Assessor for assessment and illustrative purposes only. It does not represent a survey of the premises. No liability is assumed as to the sufficiency or accuracy of the data delineated hereon.