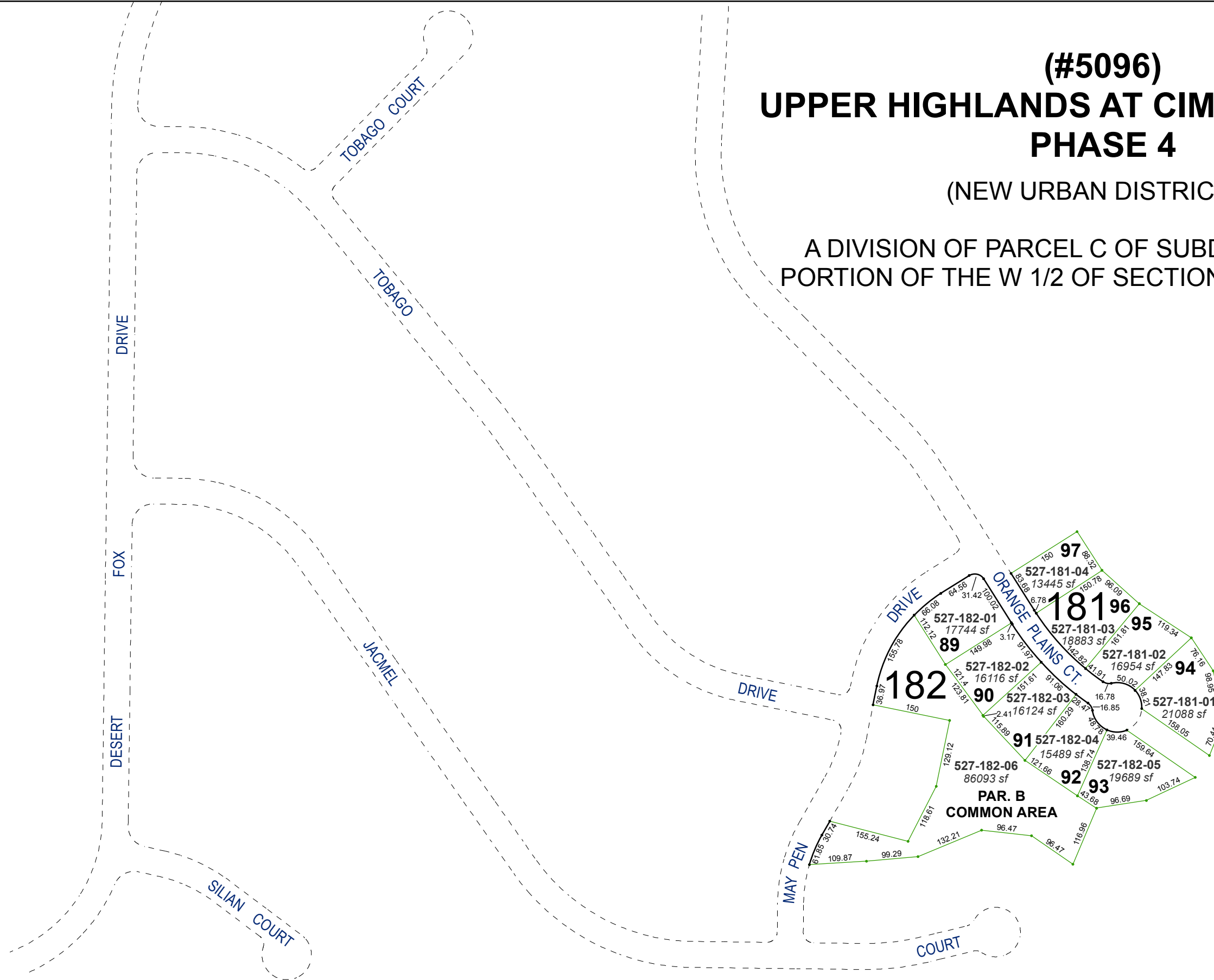


(#5096) UPPER HIGHLANDS AT CIMMARON EAST PHASE 4

(NEW URBAN DISTRICT)

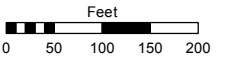
A DIVISION OF PARCEL C OF SUBDIVISION 4738
PORTION OF THE W 1/2 OF SECTION 5, T20N - R21E



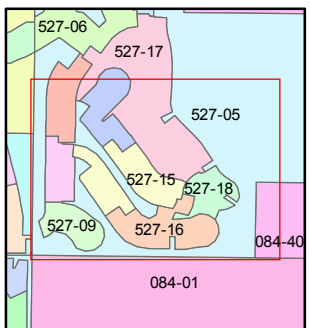
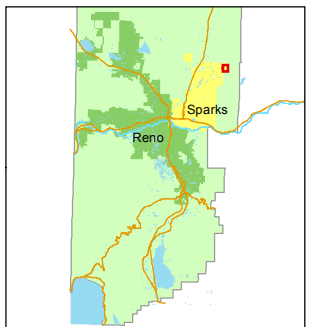
Assessor's Map Number
527-18

STATE OF NEVADA
WASHOE COUNTY
ASSESSOR'S OFFICE
Joshua G. Wilson, Assessor

1001 East Ninth Street
Building D
Reno, Nevada 89512
(775) 328-2231



1 inch = 200 feet



created by: CFB 11/7/2014

last updated: _____

area previously shown on map(s)
527-05

NOTE: This map was prepared for the use of the Washoe County Assessor for assessment and illustrative purposes only. It does not represent a survey of the premises. No liability is assumed as to the sufficiency or accuracy of the data delineated hereon.