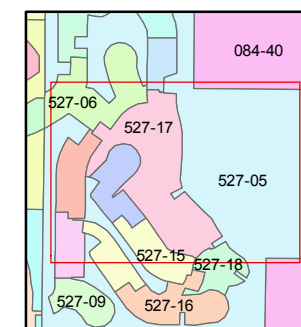
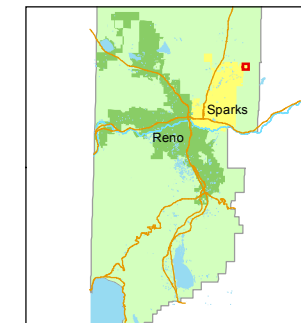


1 inch = 200 feet



created by: CFB 11/7/2014

last updated: \_\_\_\_\_

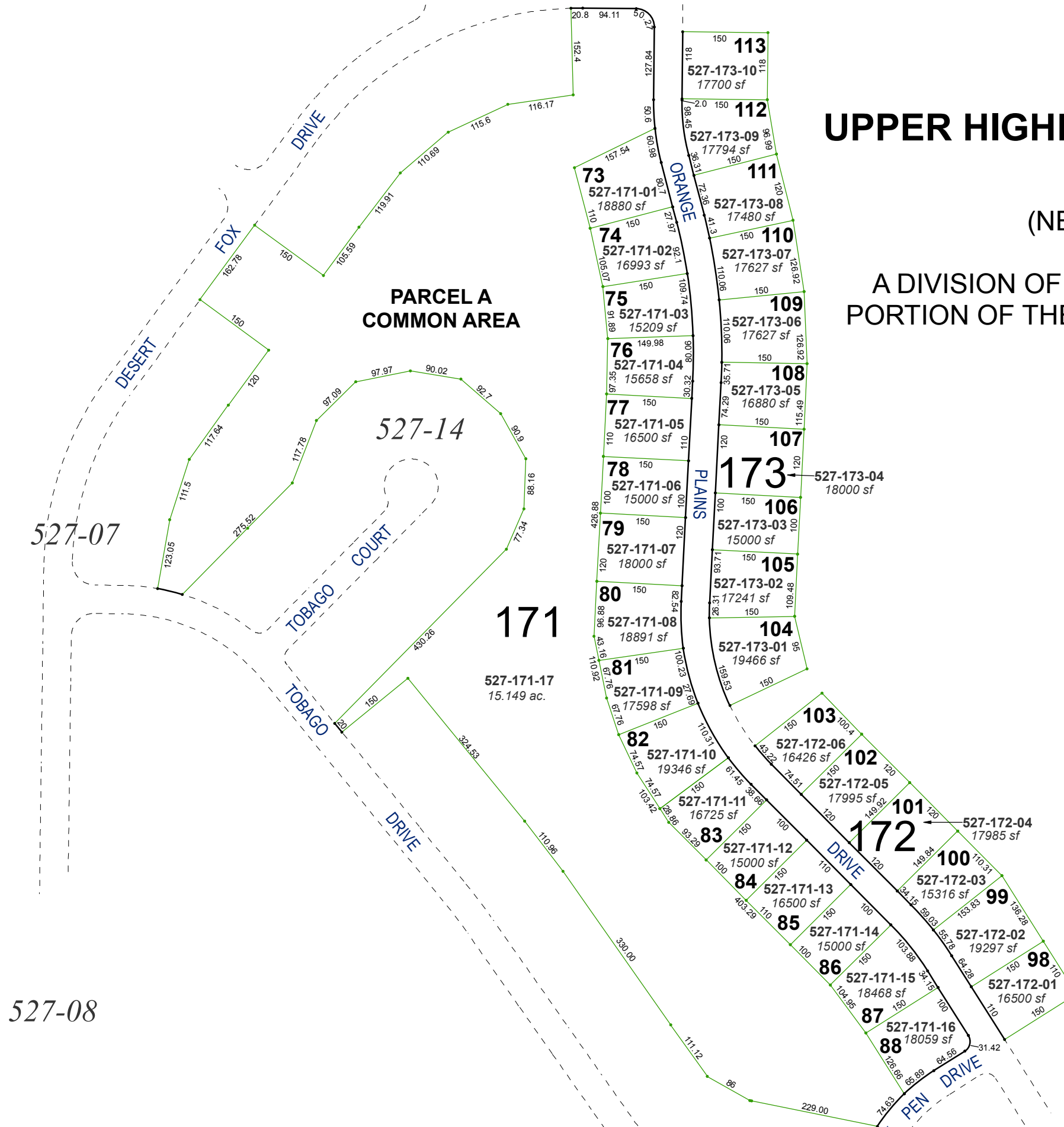
area previously shown on map(s)

527-05

NOTE: This map was prepared for the use of the Washoe County Assessor for assessment and illustrative purposes only. It does not represent a survey of the premises. No liability is assumed as to the sufficiency or accuracy of the data delineated hereon.

# (#5096) UPPER HIGHLANDS AT CIMMARON EAST PHASE 4 (NEW URBAN DISTRICT)

## A DIVISION OF PARCEL C OF SUBDIVISION 4738 PORTION OF THE W 1/2 OF SECTION 5, T20N - R21E



527-08

527-07

PARCEL A  
COMMON AREA

527-14

171

527-171-17  
15.149 ac.

527-173-04  
18000 sf

527-172-04  
17985 sf

527-171-16  
18059 sf

113  
527-173-10  
17700 sf

112  
527-173-09  
17794 sf

111  
527-173-08  
17480 sf

110  
527-173-07  
17627 sf

109  
527-173-06  
17627 sf

108  
527-173-05  
16880 sf

107  
527-173-04  
18000 sf

106  
527-173-03  
15000 sf

105  
527-173-02  
17241 sf

104  
527-173-01  
19466 sf

103  
527-172-06  
16426 sf

102  
527-172-05  
17995 sf

101  
527-172-04  
17985 sf

100  
527-172-03  
15316 sf

99  
527-172-02  
19297 sf

98  
527-172-01  
16500 sf

73  
527-171-01  
18880 sf

74  
527-171-02  
16993 sf

75  
527-171-03  
15209 sf

76  
527-171-04  
15658 sf

77  
527-171-05  
16500 sf

78  
527-171-06  
15000 sf

79  
527-171-07  
18000 sf

80  
527-171-08  
18891 sf

81  
527-171-09  
17598 sf

82  
527-171-10  
19346 sf

83  
527-171-11  
16725 sf

84  
527-171-12  
15000 sf

85  
527-171-13  
16500 sf

86  
527-171-14  
15000 sf

87  
527-171-15  
18468 sf

88  
527-171-16  
18059 sf