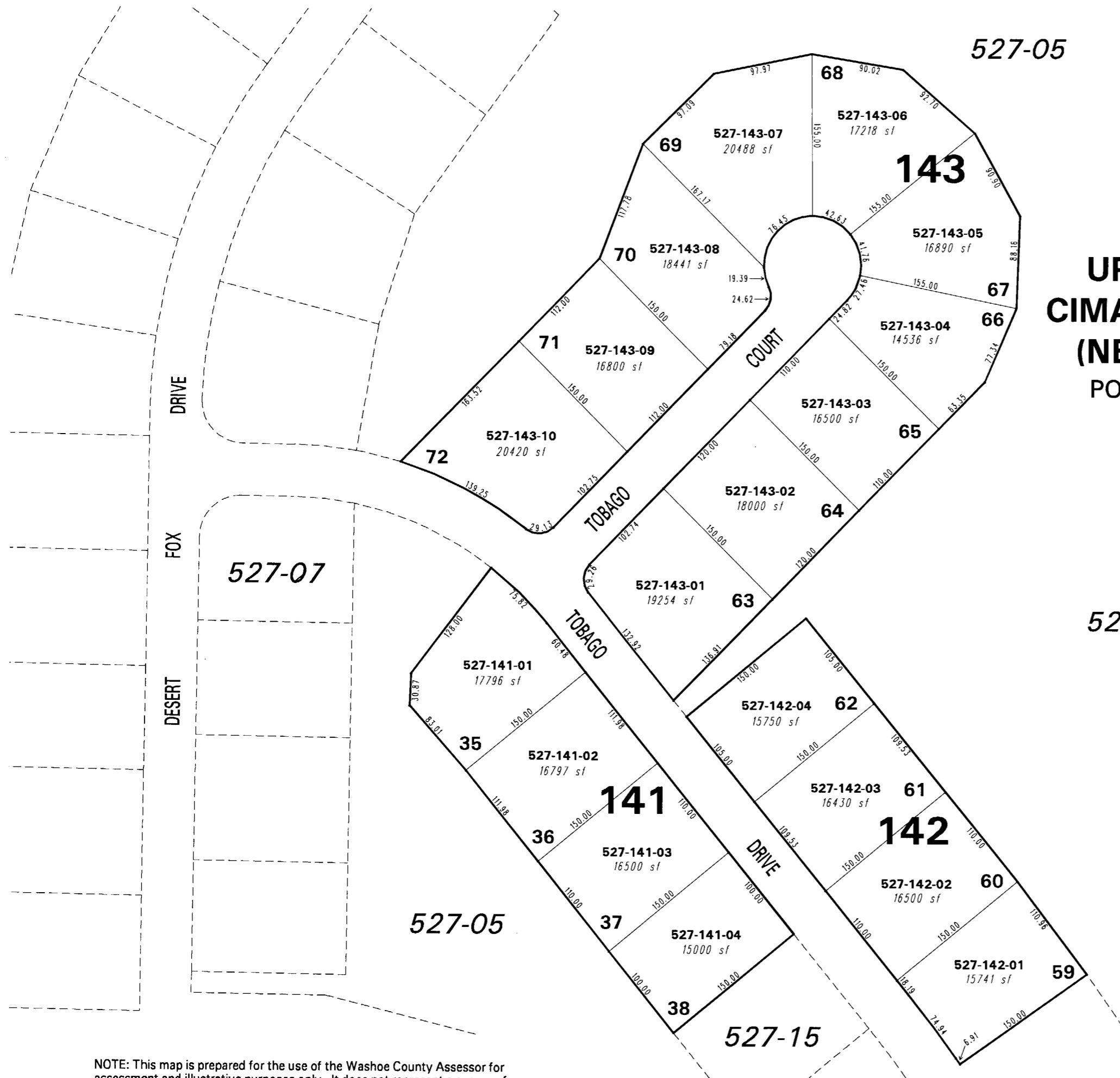


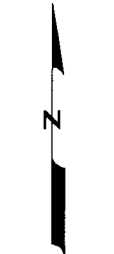
**(#4738)
UPPER HIGHLANDS AT
CIMARRON EAST - PHASE 3
(NEW URBAN DISTRICT)
POR. OF THE NW 1/4 OF SEC. 5,
T20N - R21E**



527-05

527-05

527-15



1" = 100'



NOTE: This map is prepared for the use of the Washoe County Assessor for assessment and illustrative purposes only. It does not represent a survey of the premises. No liability is assumed as to the sufficiency or the accuracy of the data delineated hereon.

Office of Washoe County Assessor, Nevada - Joshua G. Wilson

This area previously shown on 527-05

NOTE: Areas of parcels which are less than 2 acres are shown in square feet.

| | |
|----------|--------------|
| Drawn by | NLH 01/29/07 |
| Revised | |