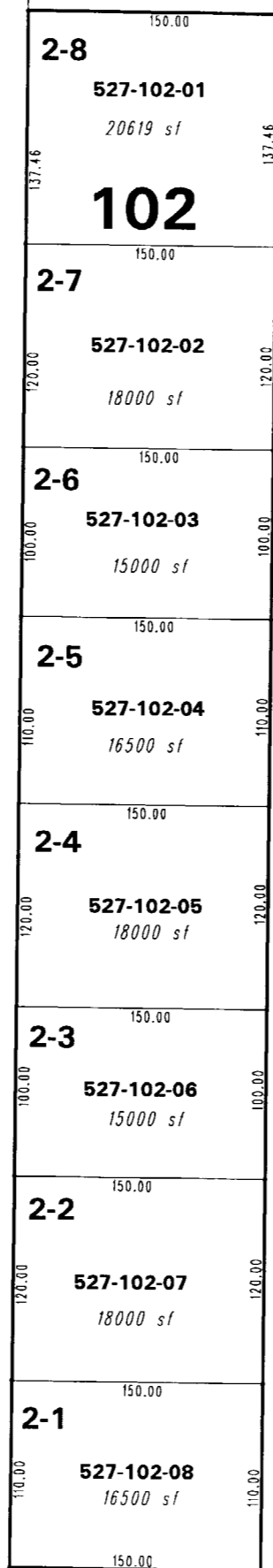
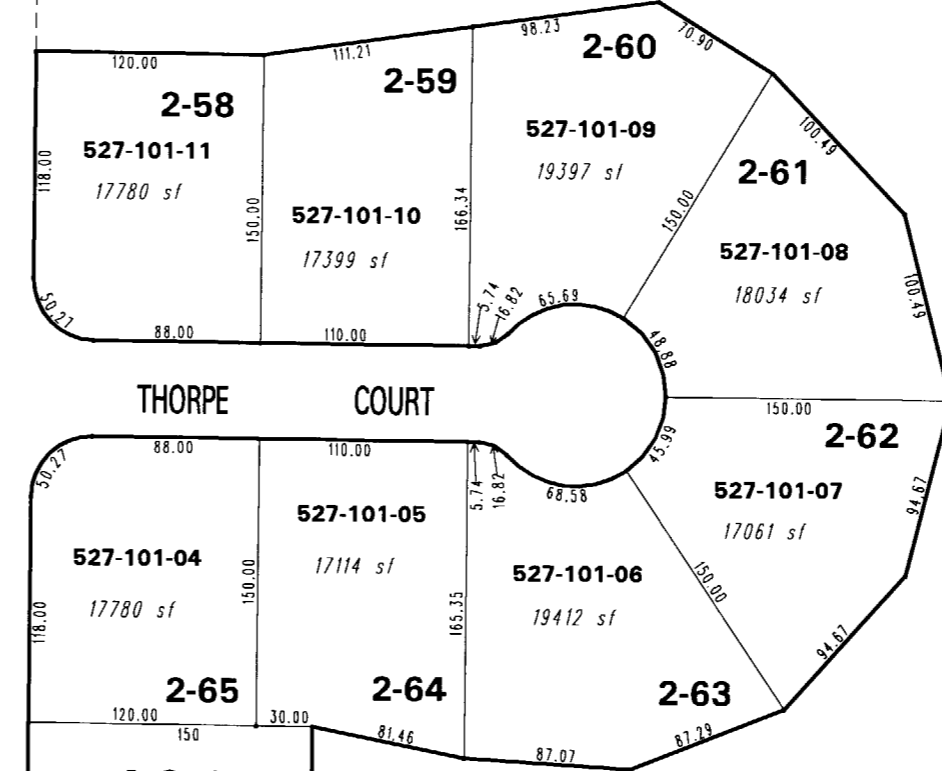


BOOK 84

527-11



527-05



527-10

527-13

**(#4609)  
UPPER HIGHLANDS AT  
CIMARRON EAST - PHASE 2  
PORTION OF NW 1/4 OF SECTION 5,  
T20N - R21E**

527-05

527-05

527-06

CASAREY COURT

1" = 100'



NOTE: This map is prepared for the use of the Washoe County Assessor for assessment and illustrative purposes only. It does not represent a survey of the premises. No liability is assumed as to the sufficiency or the accuracy of the data delineated hereon.

Office of Washoe County Assessor, Nevada - Robert W. McGowan

This area previously shown on 527-05

NOTE: Areas of parcels which are less than 2 acres are shown in square feet.

Drawn by PK 3/9/06  
Revised \_\_\_\_\_