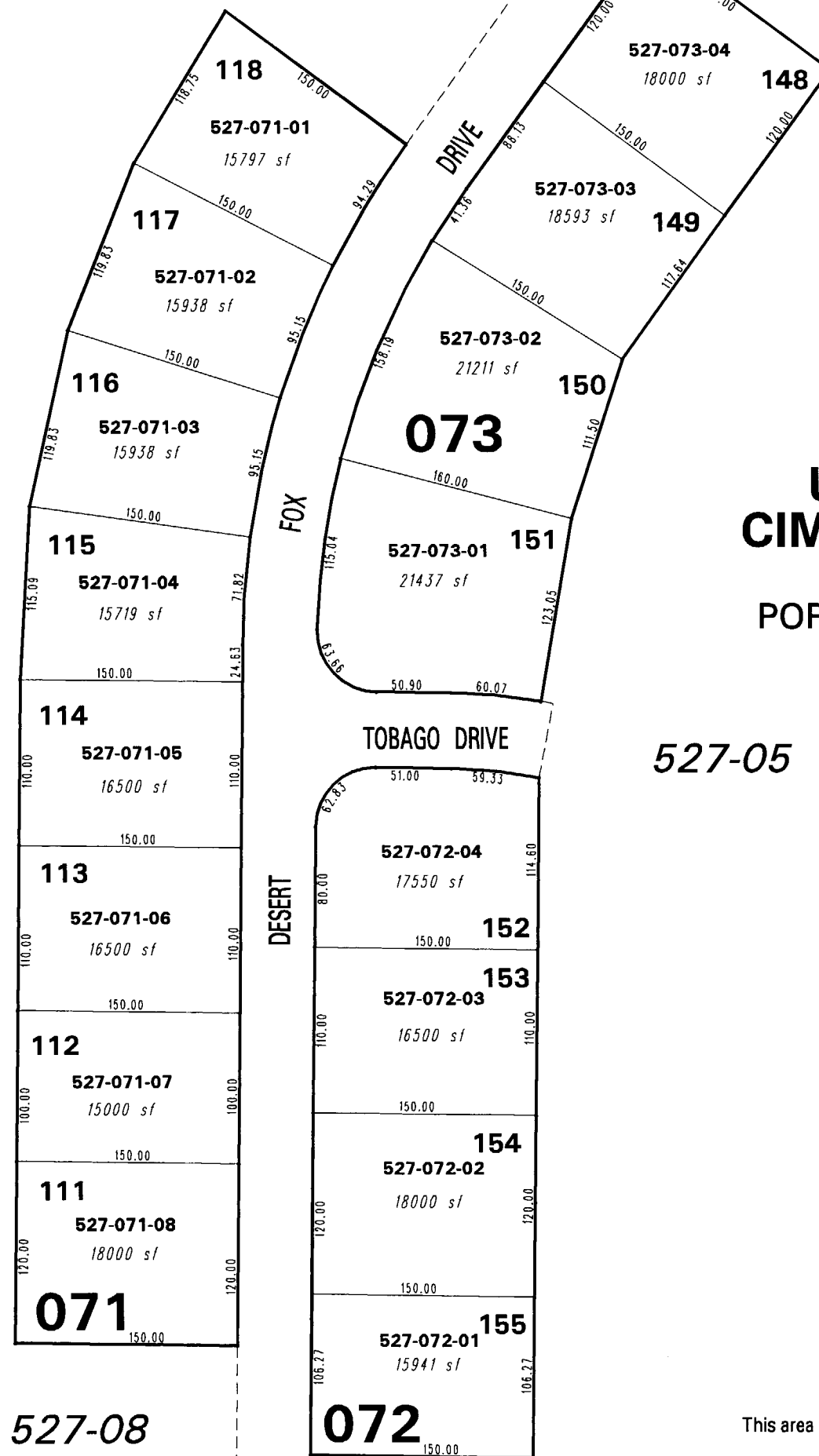


527-05

084-50



(#4450)
UPPER HIGHLANDS AT
CIMARRON EAST - PHASE 1
(NEW URBAN DISTRICT)
 PORTION OF THE W 1/2 OF SECTION 5
 T20N - R21E

527-05

527-08

Office of Washoe County Assessor, Nevada - Robert W. McGowan

NOTE: This map is prepared for the use of the Washoe County Assessor for assessment and illustrative purposes only. It does not represent a survey of the premises. No liability is assumed as to the sufficiency or the accuracy of the data delineated hereon.

This area previously shown on 084-40

NOTE: Areas of parcels which are less than 2 acres are shown in square feet.

Drawn by PK 03/15/05
 Revised _____

