

076-39

31 32 Washoe County City of Sparks 935.88 825.47

# (#4738) UPPER HIGHLANDS AT CIMARRON EAST - PHASE 3 (NEW URBAN DISTRICT) POR. OF THE NW 1/4 OF SEC. 5, T20N - R21E

Assessor's Map Number

**527-05**

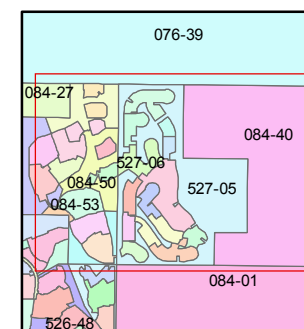
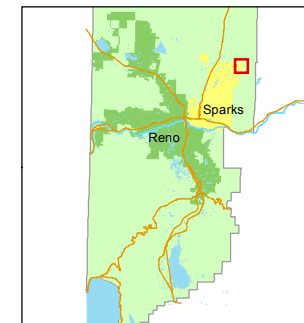
STATE OF NEVADA  
**WASHOE COUNTY**  
ASSESSOR'S OFFICE  
Joshua G. Wilson, Assessor

1001 East Ninth Street  
Building D  
Reno, Nevada 89512  
(775) 328-2231



Feet  
0 100 200 300 400 500

1 inch = 500 feet



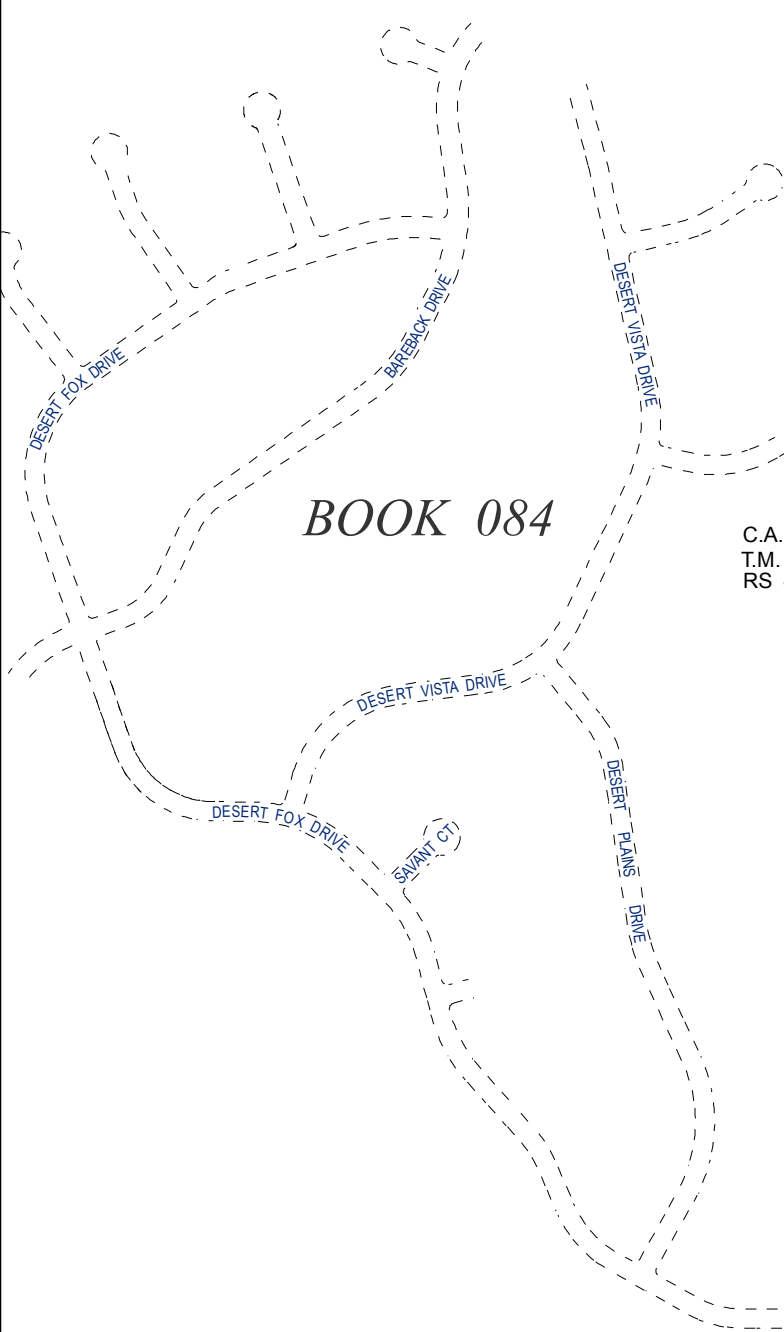
created by: CFB 11/10/2014

last updated:

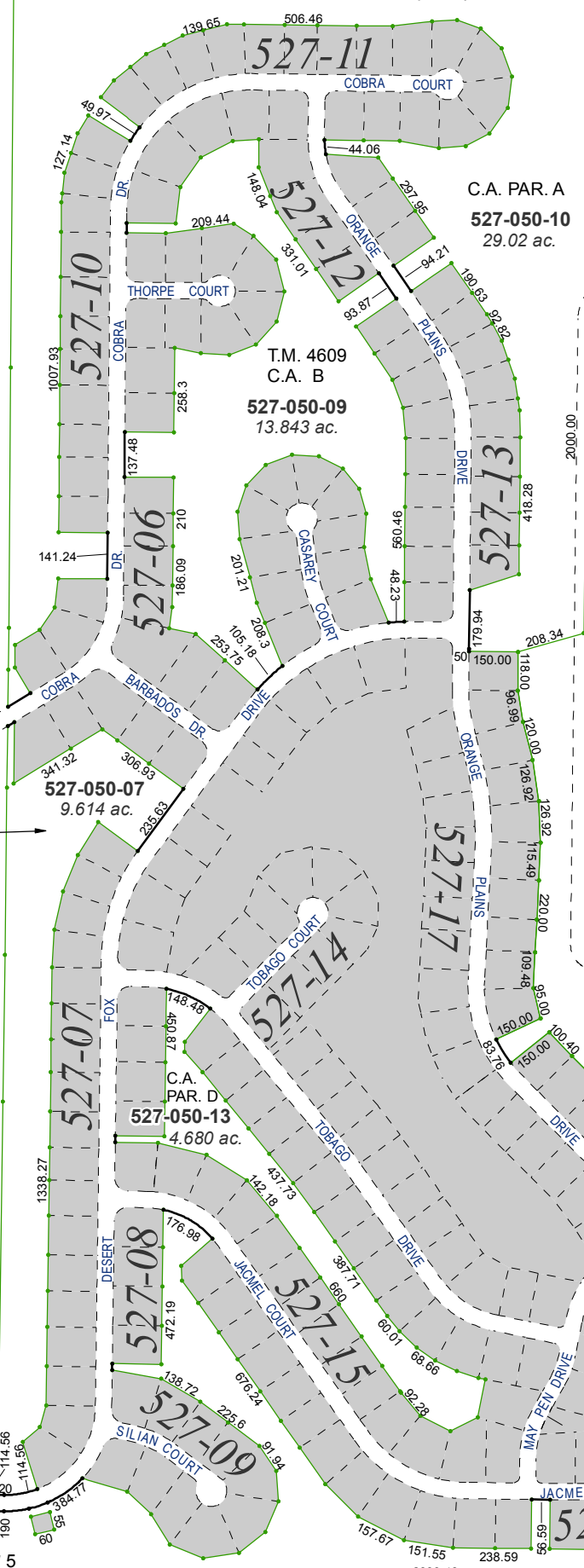
area previously shown on map(s)

084-40

NOTE: This map was prepared for the use of the Washoe County Assessor for assessment and illustrative purposes only. It does not represent a survey of the premises. No liability is assumed as to the sufficiency or accuracy of the data delineated hereon.



C.A. A-1  
T.M. 4450  
RS 4606



50' ACCESS,  
PUBLIC UTILITY  
& DRAINAGE EASEMENT

PARCEL B  
T.M. 4450

C.A. PAR. B  
**527-050-11**  
80.324 ac.

C.A. PAR. E  
**527-050-14**  
17.982 ac.

C.A. = COMMON AREA

084-01 City of Sparks Washoe County