

La Posada Dr. Annexed to City of Sparks per Annex. TM 4169

Sparks City Limits

LA POSADA DRIVE

BOOK 534

524-36

524-32

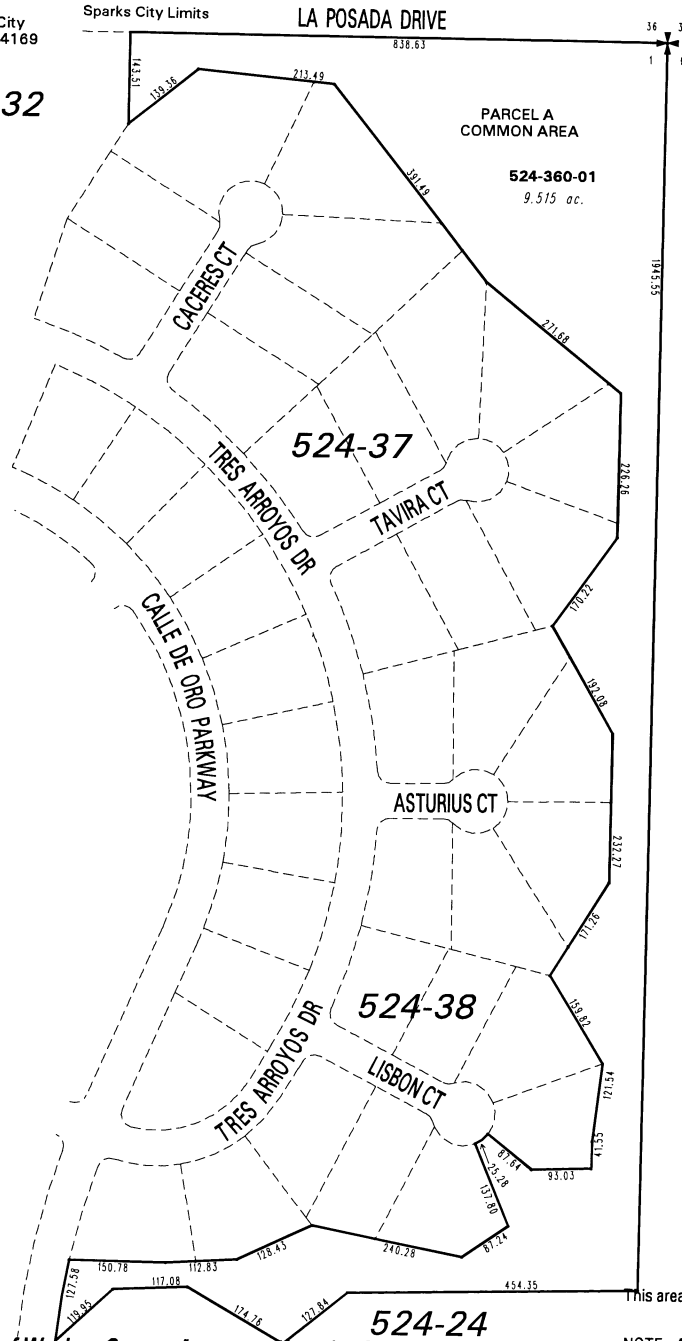
PARCEL A COMMON AREA

524-360-01
9.515 ac.

**(#3819)
CIMARRON UNIT 9
PHASE 2**

A PLANNED RESIDENTIAL COMMUNITY
PORTION OF N1/2 SECTION 1
T20N - R20E

BOOK 84 - PG 27



524-40

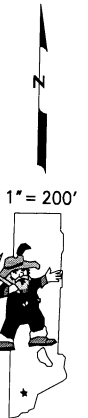
524-24

This area previously shown on 524-31

NOTE: This map is prepared for the use of the Washoe County Assessor for assessment and illustrative purposes only. It does not represent a survey of the premises. No liability is assumed as to the sufficiency or the accuracy of the data delineated hereon.

Office of Washoe County Assessor, Nevada - Robert W. McGowan

NOTE: Areas of parcels which are less than 2 acres are shown in square feet.



Drawn by DSR 05/04/00
Revised KSB 5/01/03