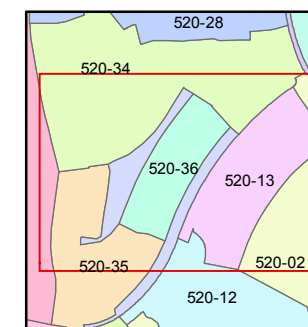
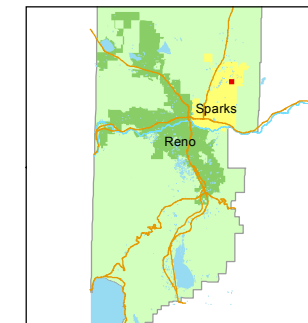


1 inch = 100 feet



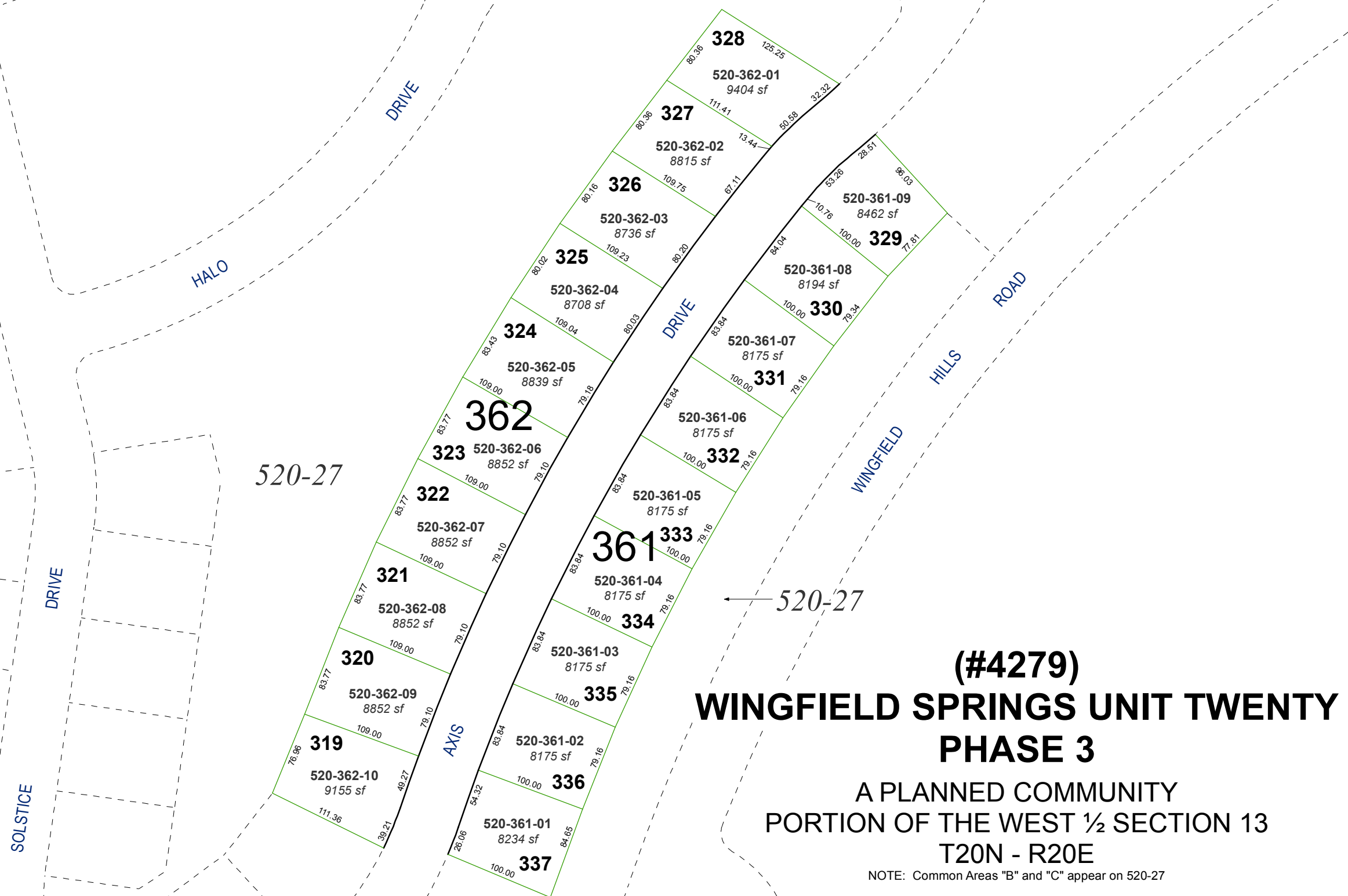
created by: EMG 4/2/2014

last updated: \_\_\_\_\_

area previously shown on map(s)

520-27

NOTE: This map was prepared for the use of the Washoe County Assessor for assessment and illustrative purposes only. It does not represent a survey of the premises. No liability is assumed as to the sufficiency or accuracy of the data delineated hereon.



**(#4279)**  
**WINGFIELD SPRINGS UNIT TWENTY**  
**PHASE 3**

A PLANNED COMMUNITY  
PORTION OF THE WEST 1/2 SECTION 13  
T20N - R20E

NOTE: Common Areas "B" and "C" appear on 520-27