

(#4128) WINGFIELD SPRINGS UNIT TWENTY-ONE B

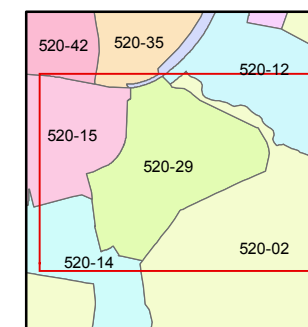
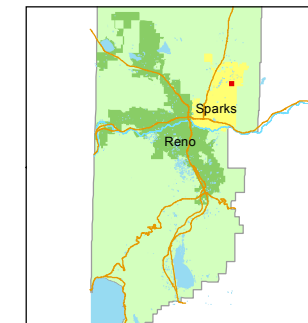
A PLANNED COMMUNITY PORTION OF THE SW ¼ SECTION 13 T20N - R20E

STATE OF NEVADA
WASHOE COUNTY
ASSESSOR'S OFFICE
Joshua G. Wilson, Assessor

1001 East Ninth Street
Building D
Reno, Nevada 89512
(775) 328-2231



1 inch = 100 feet



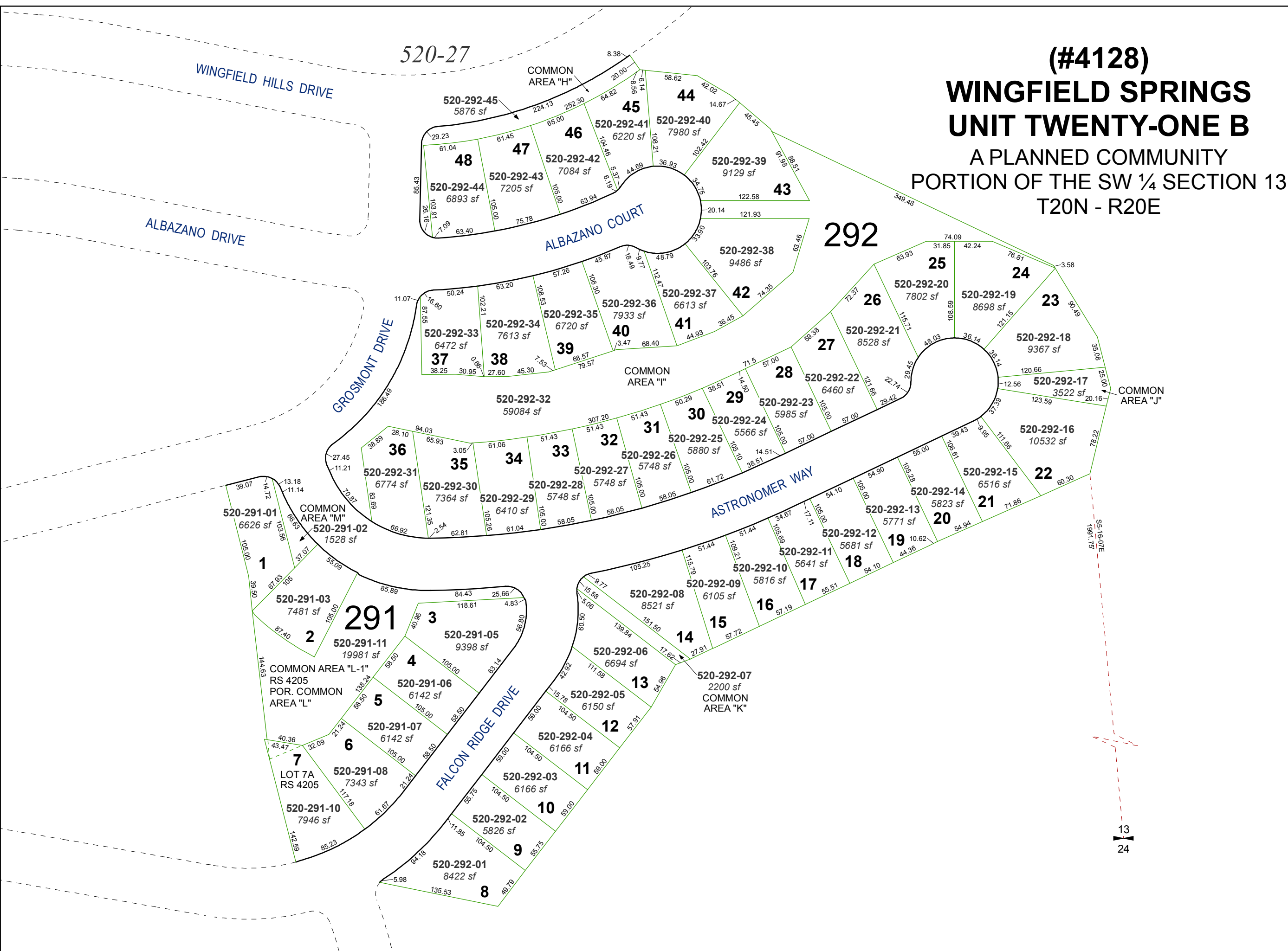
created by: EMG 4/2/2014

last updated: _____

area previously shown on map(s)

520-02

NOTE: This map was prepared for the use of the Washoe County Assessor for assessment and illustrative purposes only. It does not represent a survey of the premises. No liability is assumed as to the sufficiency or accuracy of the data delineated hereon.



13
24