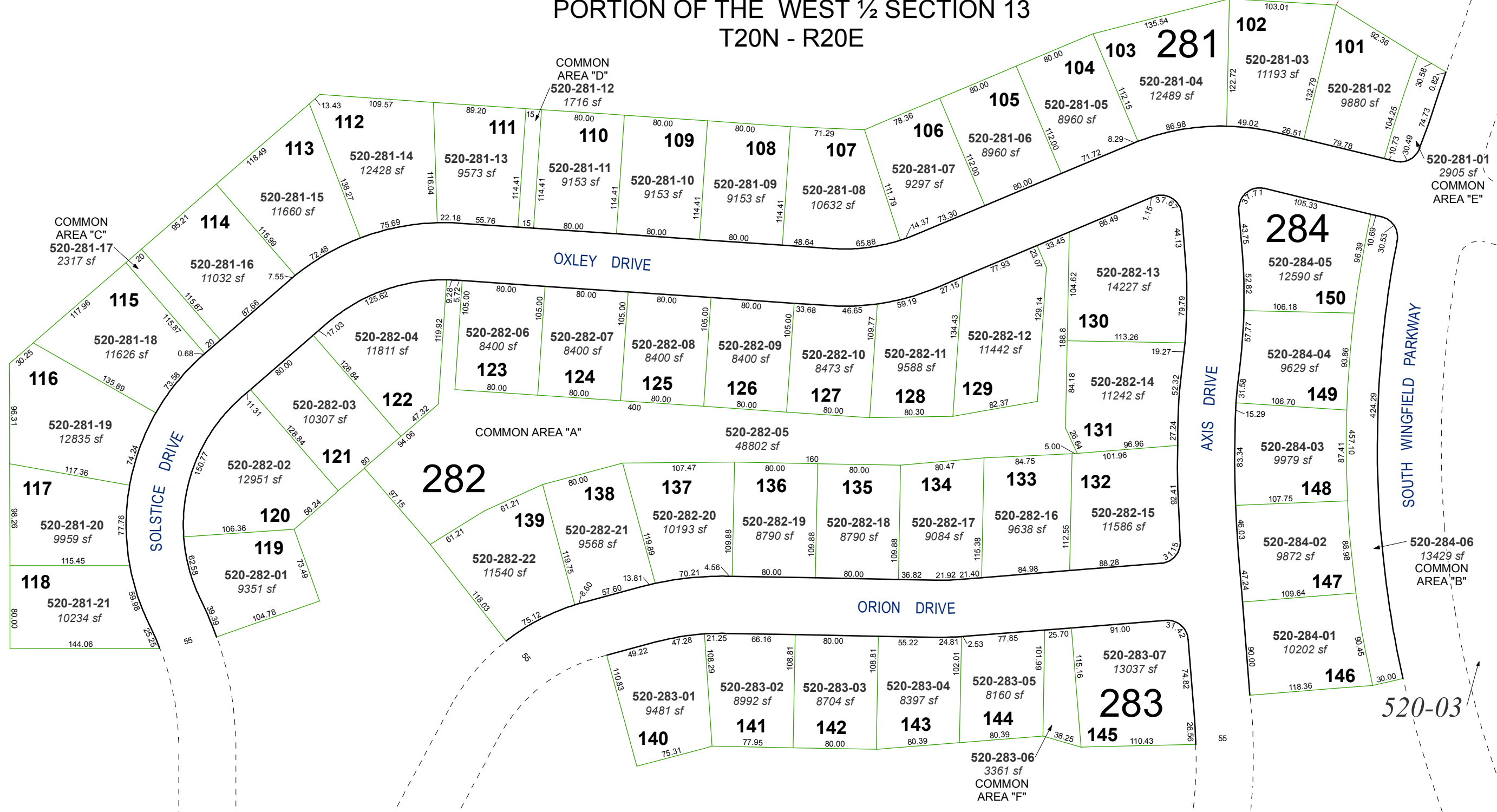


(#4127) WINGFIELD SPRINGS UNIT TWENTY PHASE 1

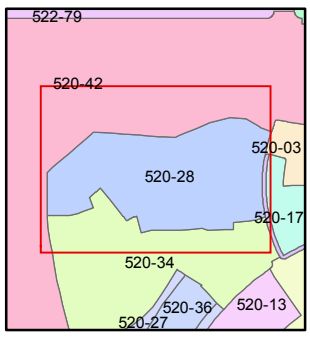
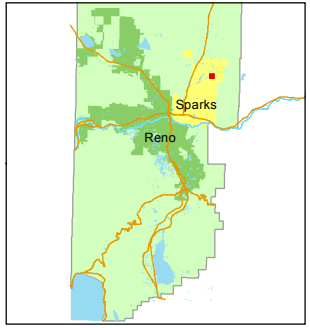
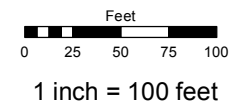
A PLANNED COMMUNITY
PORTION OF THE WEST ½ SECTION 13
T20N - R20E



Assessor's Map Number
520-28

STATE OF NEVADA
WASHOE COUNTY
ASSESSOR'S OFFICE
Joshua G. Wilson, Assessor

1001 East Ninth Street
Building D
Reno, Nevada 89512
(775) 328-2231



created by: EMG 4/1/2014
last updated: _____
area previously shown on map(s)
520-02

NOTE: This map was prepared for the use of the Washoe County Assessor for assessment and illustrative purposes only. It does not represent a survey of the premises. No liability is assumed as to the sufficiency or accuracy of the data delineated hereon.