

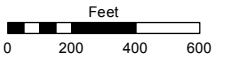
SECTIONS 13 & 14, T20N - R20E

Assessor's Map Number

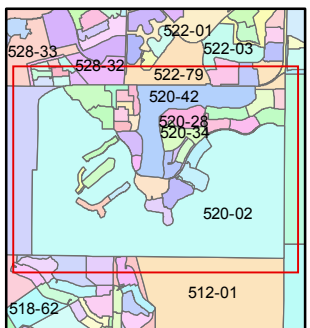
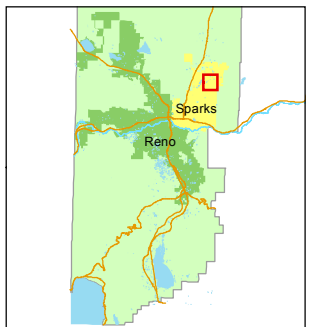
520-02

STATE OF NEVADA
WASHOE COUNTY
 ASSESSOR'S OFFICE
 Joshua G. Wilson, Assessor

1001 East Ninth Street
 Building D
 Reno, Nevada 89512
 (775) 328-2231



1 inch = 600 feet



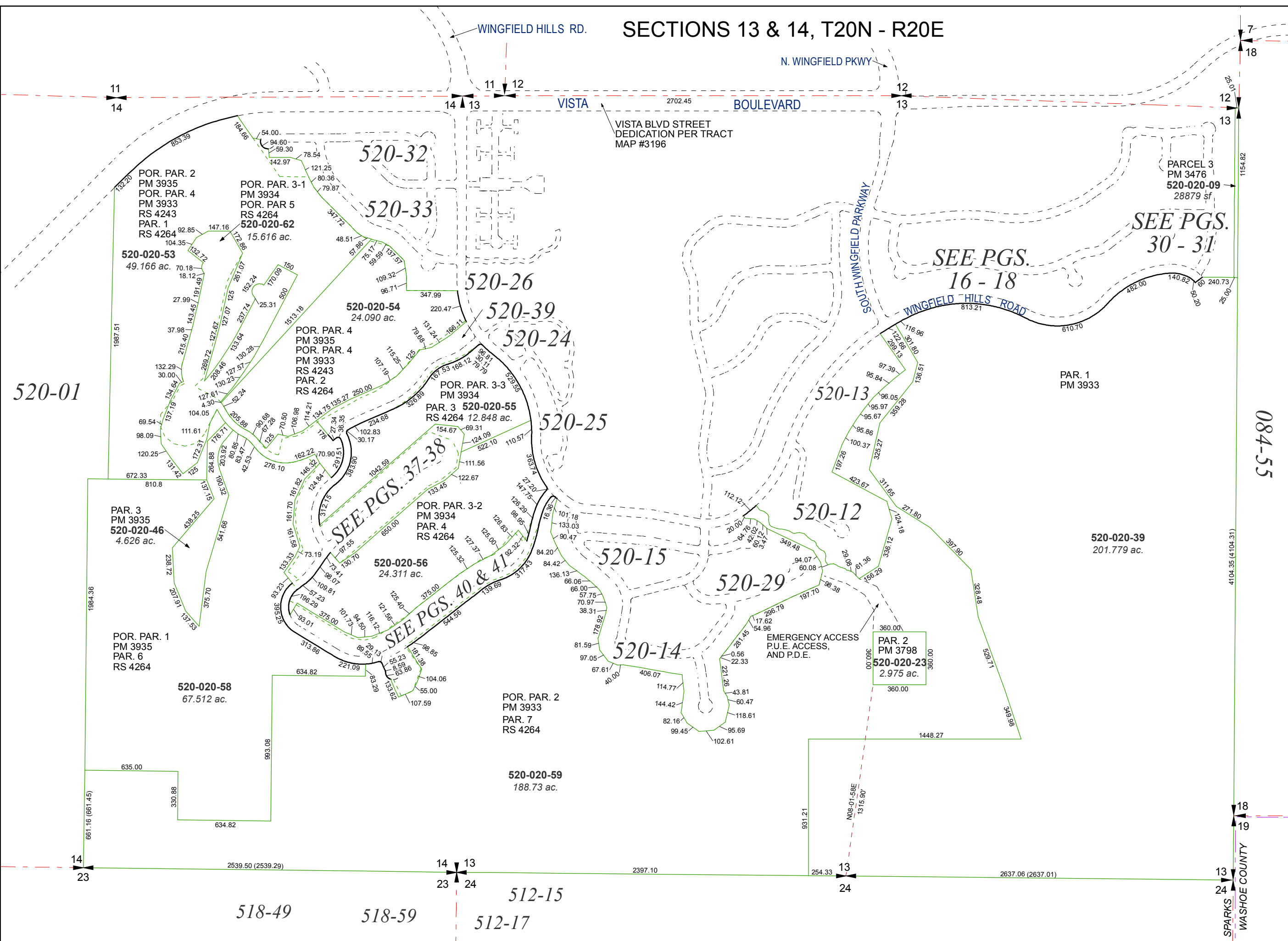
created by: EG 3/26/2014

last updated: _____

area previously shown on map(s)

522-08

NOTE: This map was prepared for the use of the Washoe County Assessor for assessment and illustrative purposes only. It does not represent a survey of the premises. No liability is assumed as to the sufficiency or accuracy of the data delineated hereon.



084-55

SPARKS
 WASHOE COUNTY