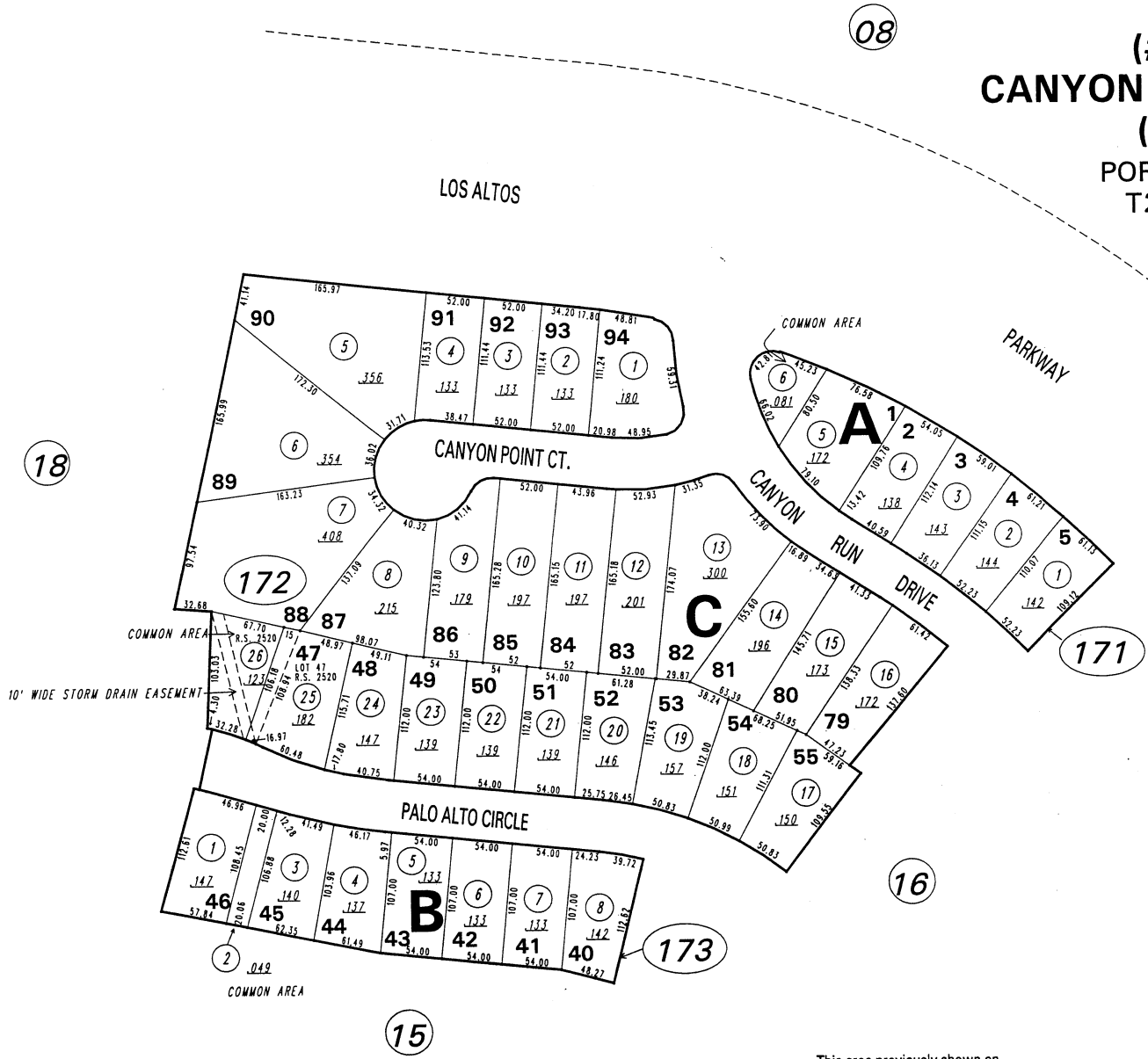


**(#2759)  
CANYON VISTA SOUTH  
(P.U.D.)**

**POR SECTION 23  
T20N - R20E**



1" = 100'



NOTE: This map is prepared for the use of the Washoe County Assessor for assessment and illustrative purposes only. It does not represent a survey of the premises. No liability is assumed as to the sufficiency or the accuracy of the data delineated herein.

Office of Washoe County Assessor, Nevada - Robert W. McGowan

This area previously shown on \_\_\_\_\_  
 NOTE:  
 ASSESSOR'S BLOCK NUMBERS SHOWN IN ELLIPSES  
 ASSESSOR'S PARCEL NUMBERS SHOWN IN CIRCLES

Drawn by	GS 5/91
Revised	2/94 4/94
	11/19/98 RL