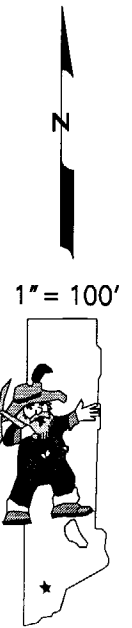
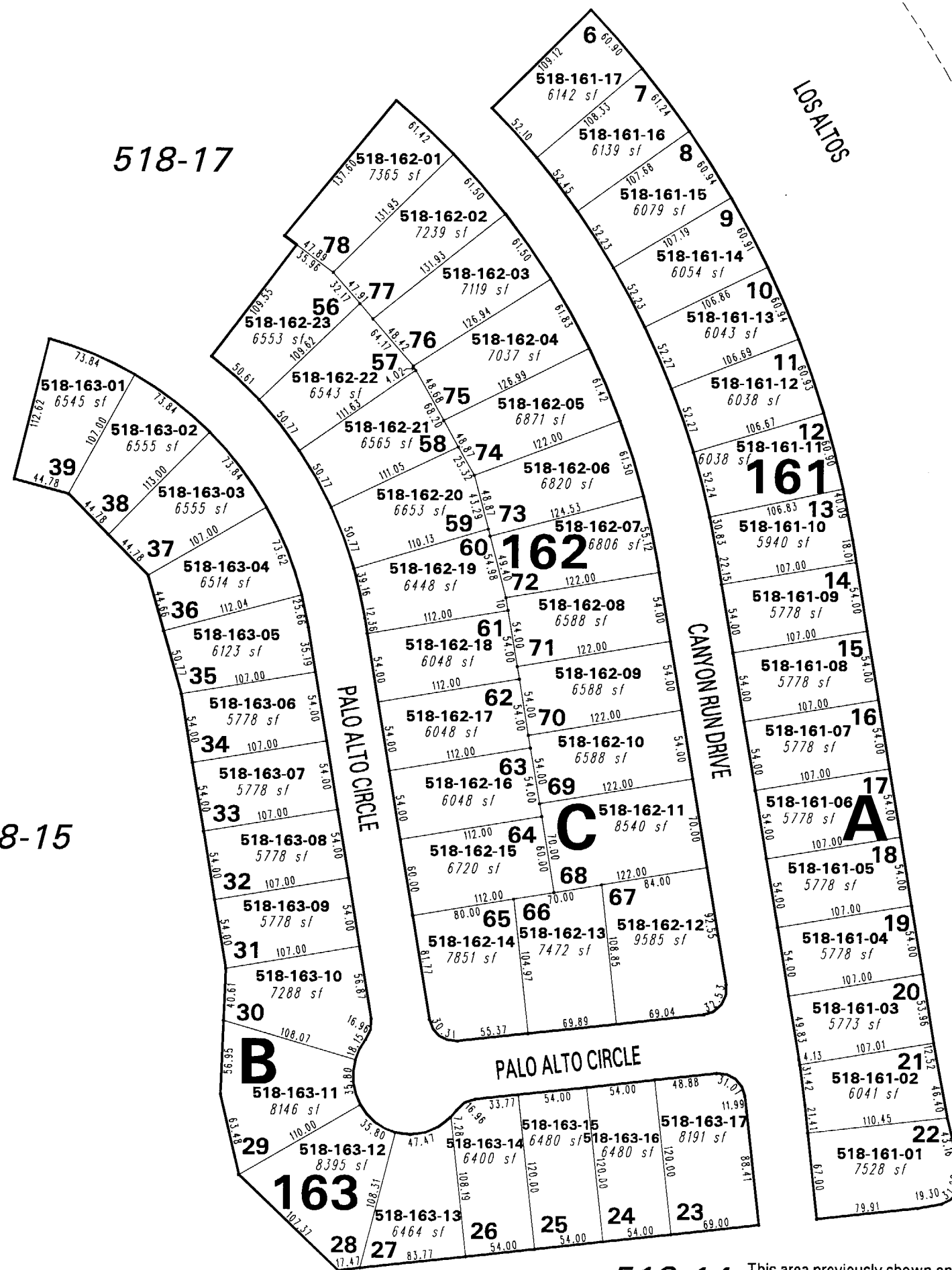


# (#2759) CANYON VISTA SOUTH (PLANNED UNIT DEVELOPMENT)

PORTION OF THE  
SE 1/4 OF SEC. 23  
T20N - R20E

518-08

518-11



NOTE: This map is prepared for the use of the Washoe County Assessor for assessment and illustrative purposes only. It does not represent a survey of the premises. No liability is assumed as to the sufficiency or the accuracy of the data delineated hereon.

518-28 518-14  
Office of Washoe County Assessor, Nevada - Robert W. McGowan

This area previously shown on \_\_\_\_\_

NOTE: Areas of parcels which are less than 2 acres are shown in square feet.

Drawn by GS 5/91  
Revised TWT 2/2/05