

CATHEDRAL PEAK DRIVE

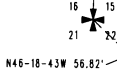
OAK HILL DR.

BOOK 510

(#4143)

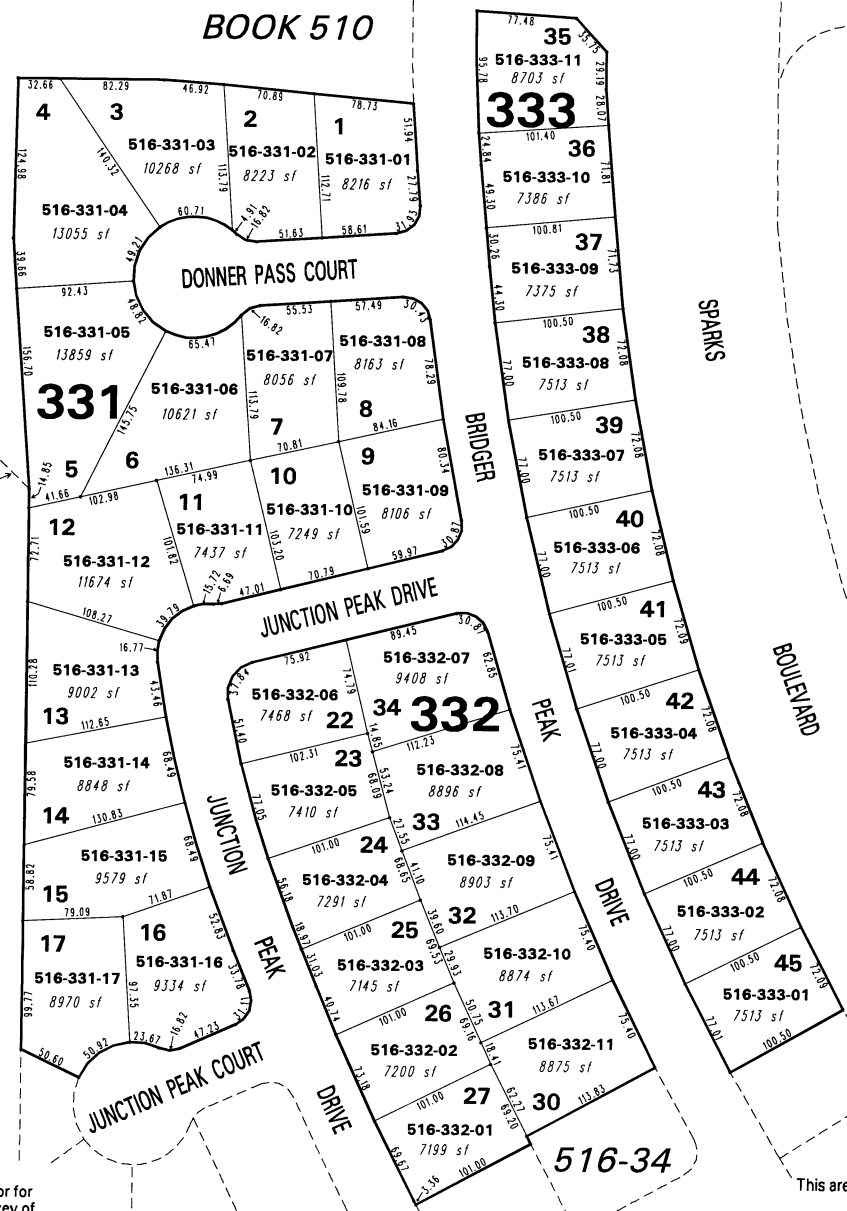
**KILEY RANCH WEST
PHASE IIIA, UNIT NO. 2**

A SINGLE FAMILY SUBDIVISION
PLANNED DEVELOPMENT
PORTIONS OF SW 1/4 OF SEC. 15 &
NW 1/4 OF SEC. 22, T20N - R20E



516-02

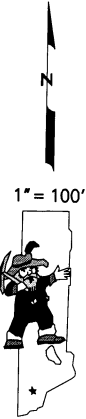
BOOK 510



SPARKS
BOULEVARD

BRIDGER

PEAK
DRIVE



This area previously shown on 516-02

NOTE: This map is prepared for the use of the Washoe County Assessor for assessment and illustrative purposes only. It does not represent a survey of the premises. No liability is assumed as to the sufficiency or the accuracy of the data delineated hereon.

Office of Washoe County Assessor, Nevada - Robert W. McGowan

NOTE: Areas of parcels which are less than 2 acres are shown in square feet.

Drawn by KSB 12/05/02
Revised _____