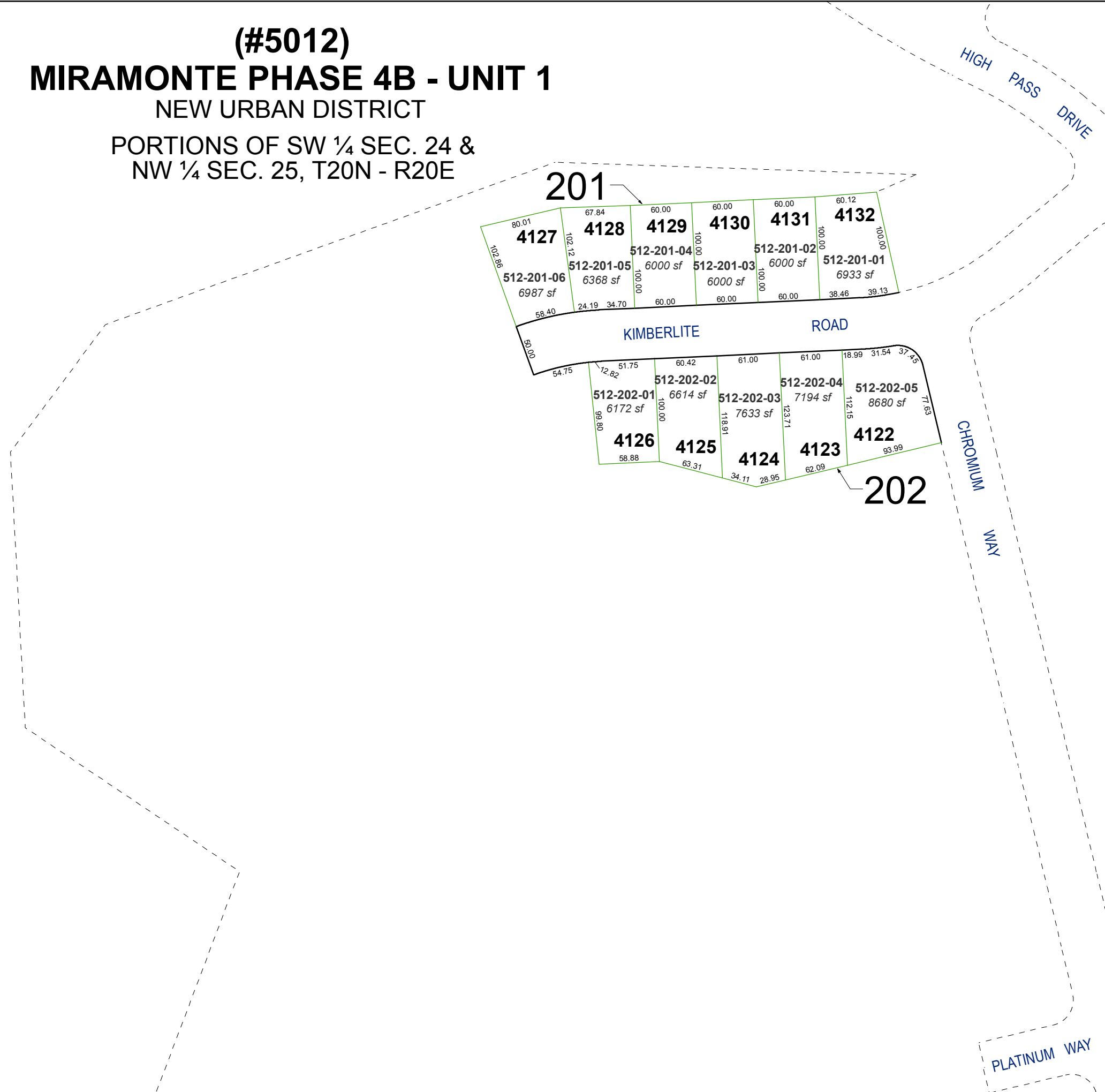


**(#5012)**  
**MIRAMONTE PHASE 4B - UNIT 1**  
 NEW URBAN DISTRICT

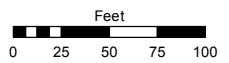
PORTIONS OF SW ¼ SEC. 24 &  
 NW ¼ SEC. 25, T20N - R20E



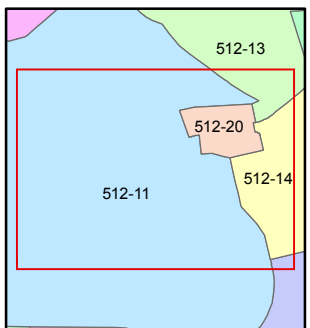
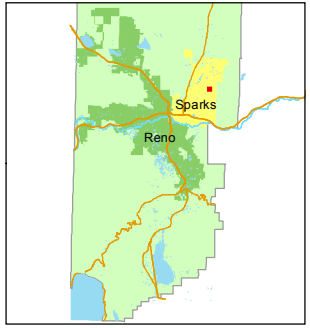
Assessor's Map Number  
**512-20**

STATE OF NEVADA  
**WASHOE COUNTY**  
 ASSESSOR'S OFFICE  
 Joshua G. Wilson, Assessor

1001 East Ninth Street  
 Building D  
 Reno, Nevada 89512  
 (775) 328-2231



1 inch = 100 feet



created by: KSB 5/21/2012

last updated: \_\_\_\_\_

area previously shown on map(s)  
512-11

NOTE: This map was prepared for the use of the Washoe County Assessor for assessment and illustrative purposes only. It does not represent a survey of the premises. No liability is assumed as to the sufficiency or accuracy of the data delineated hereon.