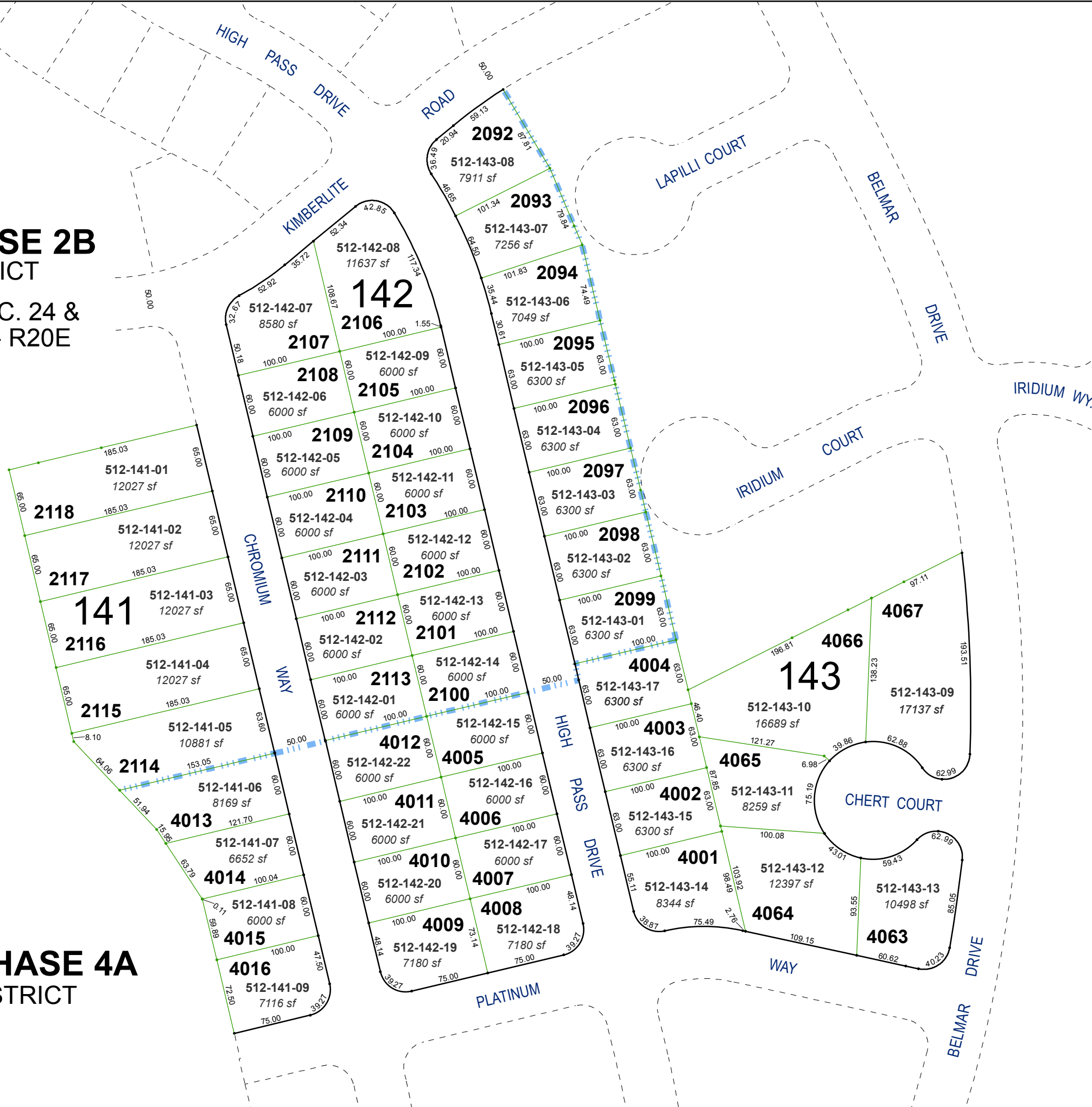


(#4654)
MIRAMONTE PHASE 2B
 NEW URBAN DISTRICT

PORTIONS OF S 1/2 SEC. 24 &
 NW 1/4 SEC. 25, T20N - R20E

(#4915)
MIRAMONTE PHASE 4A
 NEW URBAN DISTRICT

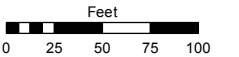


Assessor's Map Number

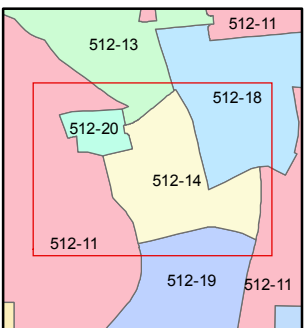
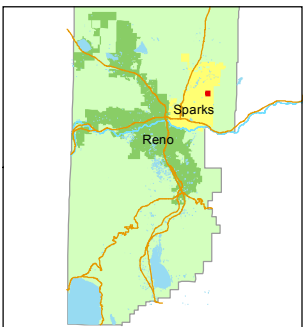
512-14

STATE OF NEVADA
WASHOE COUNTY
 ASSESSOR'S OFFICE
 Michael E. Clark, Assessor

1001 East Ninth Street
 Building D
 Reno, Nevada 89512
 (775) 328-2231



1 inch = 100 feet



created by: KSB 10/20/2010

last updated: KSB 7/08/15

area previously shown on map(s)

512-01, 512-05, 514-01

NOTE: This map was prepared for the use of the Washoe County Assessor for assessment and illustrative purposes only. It does not represent a survey of the premises. No liability is assumed as to the sufficiency or accuracy of the data delineated hereon.