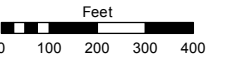


Assessor's Map Number

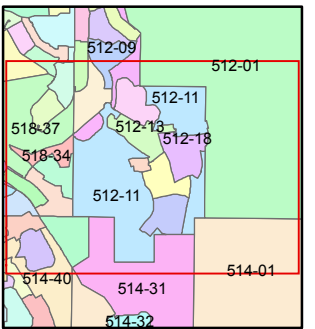
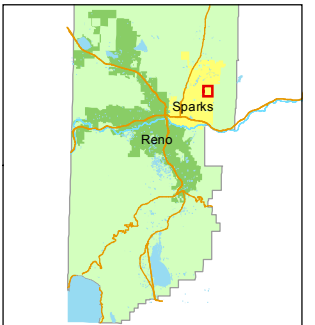
**512-11**

STATE OF NEVADA  
**WASHOE COUNTY**  
ASSESSOR'S OFFICE  
Joshua G. Wilson, Assessor

1001 East Ninth Street  
Building D  
Reno, Nevada 89512  
(775) 328-2231



1 inch = 400 feet



created by: KSB 5/11/2009

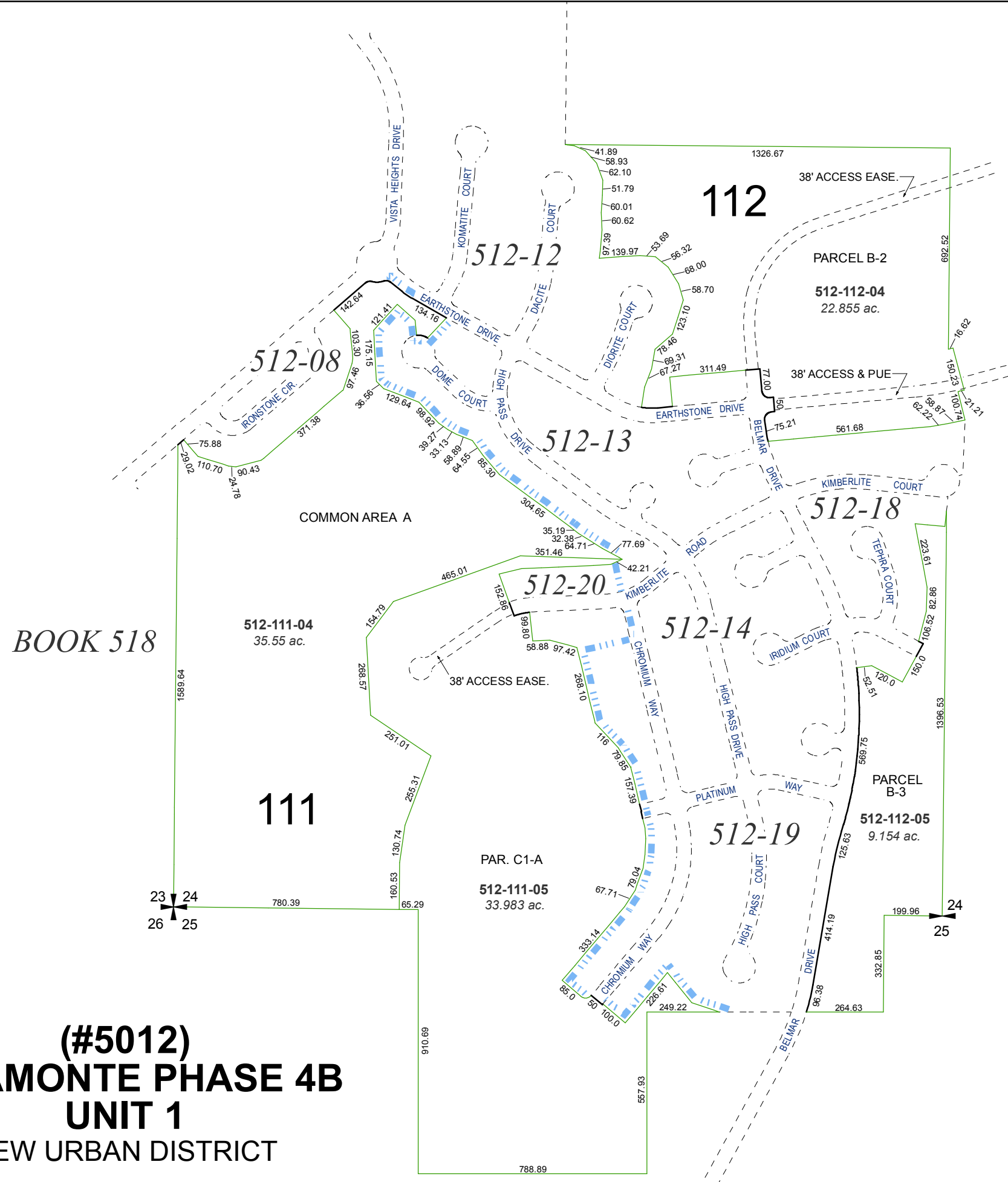
last updated: CFB 7/30/10 KSB 5/21/12

area previously shown on map(s)

512-01, 05 & 514-01

NOTE: This map was prepared for the use of the Washoe County Assessor for assessment and illustrative purposes only. It does not represent a survey of the premises. No liability is assumed as to the sufficiency or accuracy of the data delineated hereon.

**(#4915)**  
**MIRAMONTE PHASE 4A**  
NEW URBAN DISTRICT  
PORTIONS OF S 1/2 SEC. 24 &  
NW 1/4 SEC. 25, T20N - R20E



BOOK 518

**(#5012)**  
**MIRAMONTE PHASE 4B**  
UNIT 1  
NEW URBAN DISTRICT