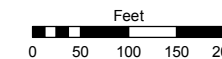


Assessor's Map Number

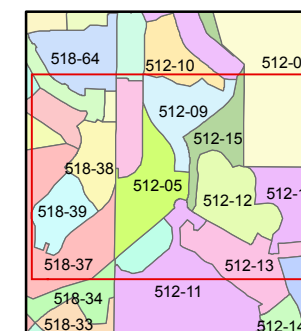
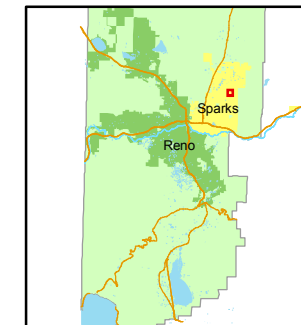
**512-05**

STATE OF NEVADA  
**WASHOE COUNTY**  
ASSESSOR'S OFFICE  
Joshua G. Wilson, Assessor

1001 East Ninth Street  
Building D  
Reno, Nevada 89512  
(775) 328-2231



1 inch = 200 feet



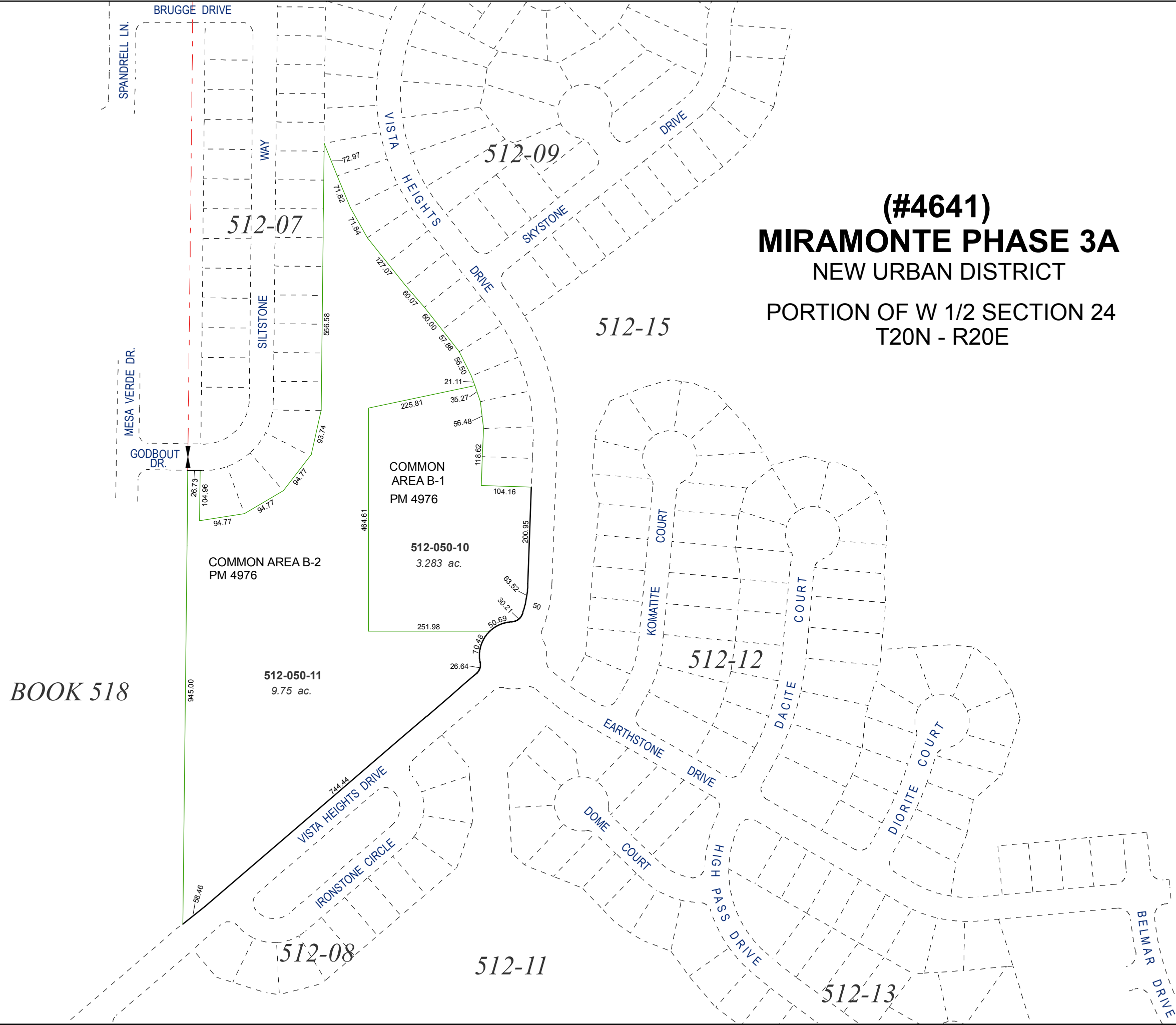
created by: KSB 4/03/09

last updated: \_\_\_\_\_

area previously shown on map(s)

512-01

NOTE: This map was prepared for the use of the Washoe County Assessor for assessment and illustrative purposes only. It does not represent a survey of the premises. No liability is assumed as to the sufficiency or accuracy of the data delineated hereon.



**(#4641)**  
**MIRAMONTE PHASE 3A**  
NEW URBAN DISTRICT

PORTION OF W 1/2 SECTION 24  
T20N - R20E

*BOOK 518*