

(#4804)  
AMENDED  
FIRST TEE UNIT NO. 3  
A PLANNED DEVELOPMENT  
PORTION OF SW 1/4 SEC. 15, T20N - R20E

510-58

510-58

510-50

HENRY ORR PARKWAY

FLORAL RIDGE WAY

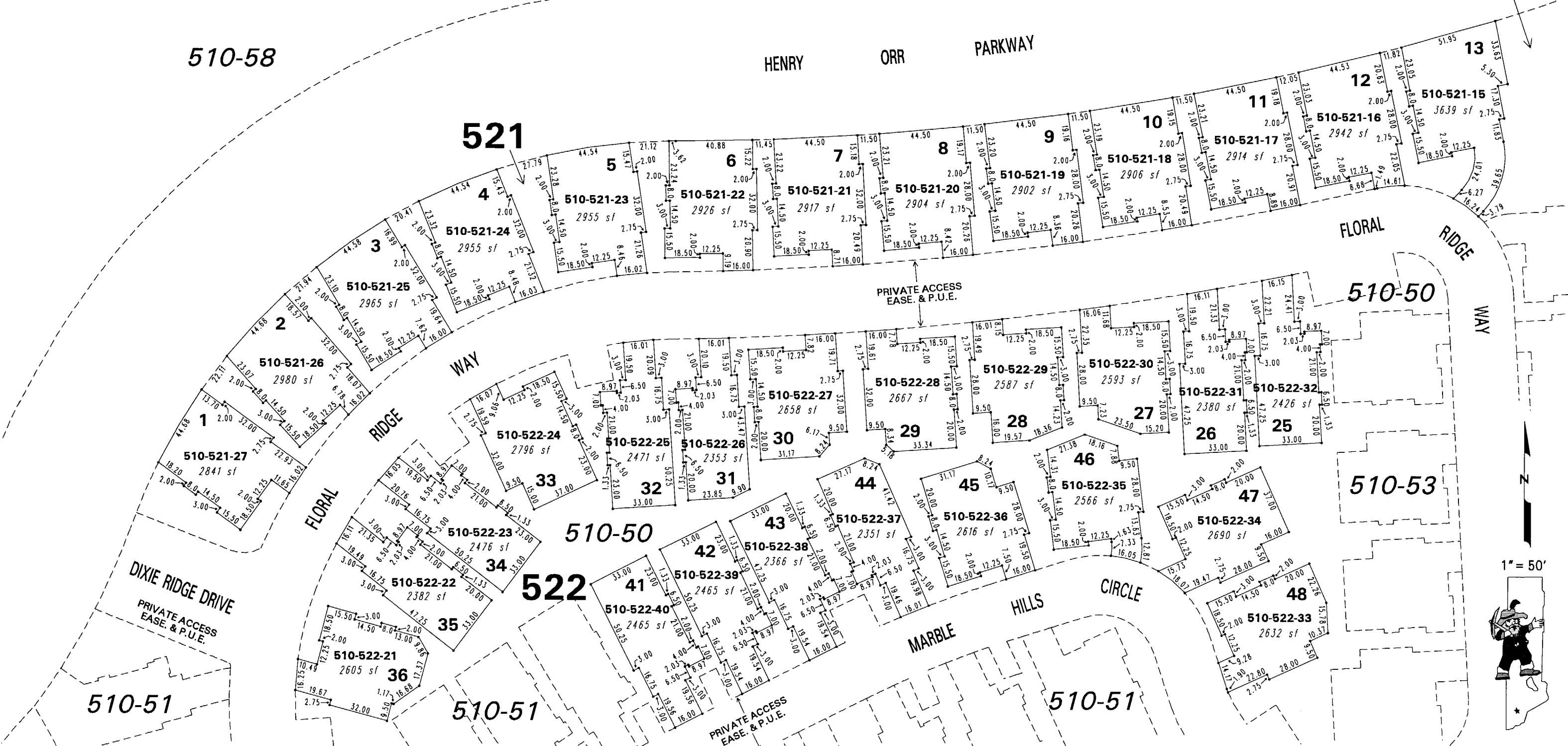
WAY

510-50

510-53

N

1" = 50'



NOTE: This map is prepared for the use of the Washoe County Assessor for assessment and illustrative purposes only. It does not represent a survey of the premises. No liability is assumed as to the sufficiency or the accuracy of the data delineated hereon.

Office of Washoe County Assessor, Nevada - Joshua G. Wilson

This area previously shown on 510-19

NOTE: Areas of parcels which are less than 2 acres are shown in square feet.

Drawn by KSB 08/14/07  
Revised \_\_\_\_\_