

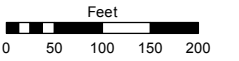
PORTION OF SE 1/4 SECTION 21
T20N - R20E

Assessor's Map Number

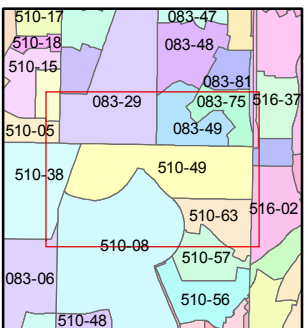
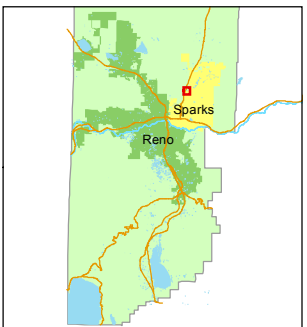
510-49

STATE OF NEVADA
WASHOE COUNTY
ASSESSOR'S OFFICE
Michael E. Clark, Assessor

1001 East Ninth Street
Building D
Reno, Nevada 89512
(775) 328-2231



1 inch = 200 feet



created by: KSB 2/11/2010

last updated: KSB 12/11/13 KSB 3/16/15

area previously shown on map(s)

510-08

NOTE: This map was prepared for the use of the Washoe County Assessor for assessment and illustrative purposes only. It does not represent a survey of the premises. No liability is assumed as to the sufficiency or accuracy of the data delineated hereon.

