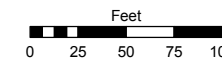
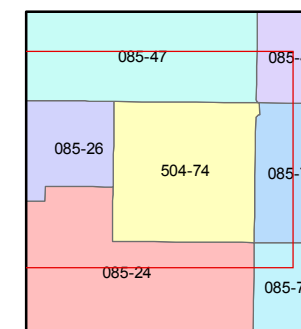
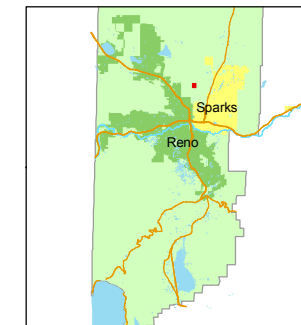


STATE OF NEVADA
WASHOE COUNTY
ASSESSOR'S OFFICE
Joshua G. Wilson, Assessor

1001 East Ninth Street
Building D
Reno, Nevada 89512
(775) 328-2231



1 inch = 100 feet



created by: DSR 11/08/2010

last updated: _____

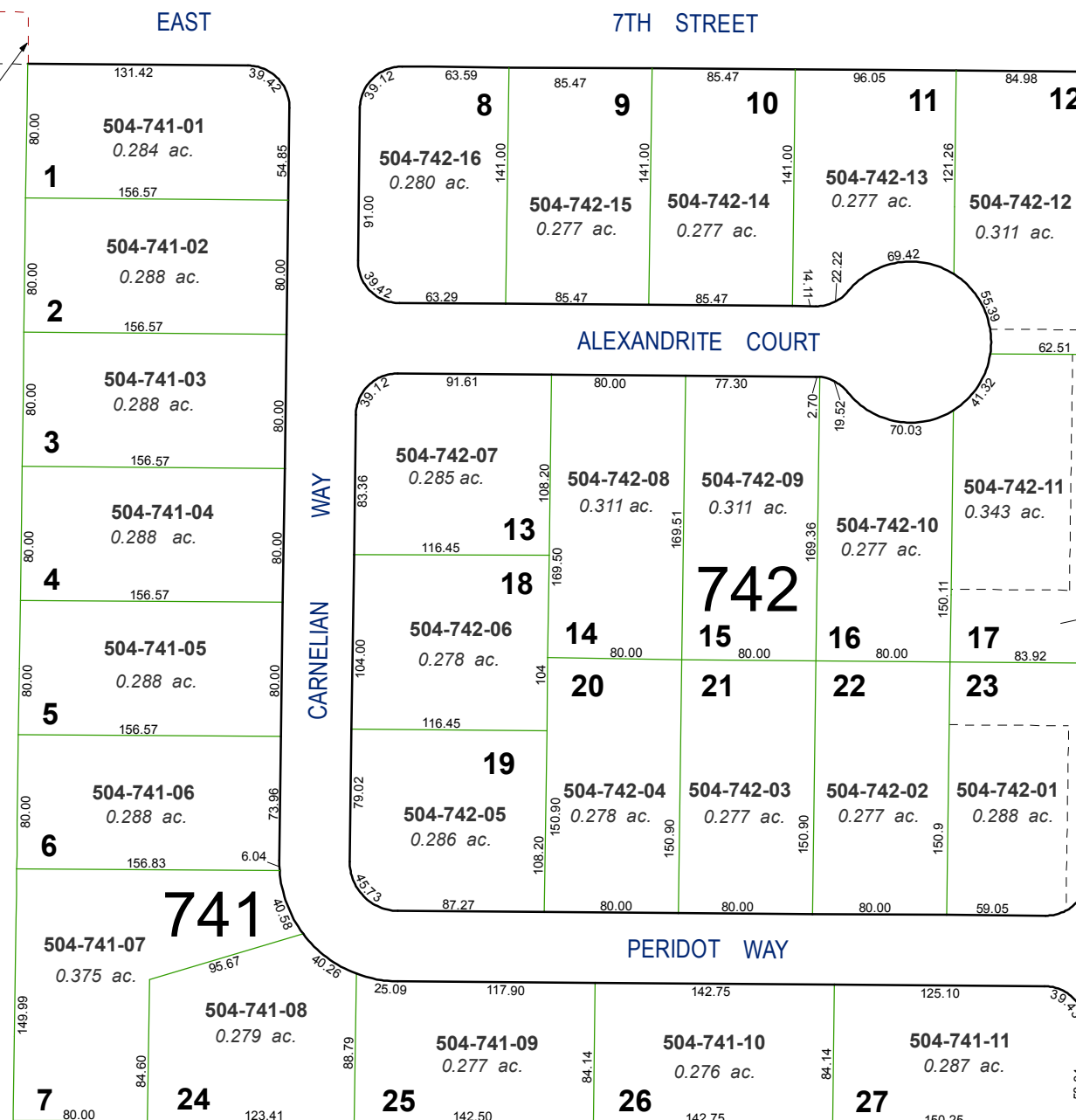
area previously shown on map(s)

85-26

NOTE: This map was prepared for the use of the Washoe County Assessor for assessment and illustrative purposes only. It does not represent a survey of the premises. No liability is assumed as to the sufficiency or accuracy of the data delineated hereon.

(#3578)
GEMSTONE SUBDIVISION
PORTION OF SE 1/4 OF SECTION 18
T20N - R20E

CENTER OF SECTION 18



15' DRAINAGE EASEMENT

DETENTION POND EASEMENT

EAST

7TH STREET

ALEXANDRITE COURT

CARNELIAN WAY

LEON DRIVE

PERIDOT WAY

1 504-741-01 0.284 ac.	2 504-741-02 0.288 ac.	3 504-741-03 0.288 ac.	4 504-741-04 0.288 ac.	5 504-741-05 0.288 ac.	6 504-741-06 0.288 ac.	7 504-741-07 0.375 ac.
8 504-742-16 0.280 ac.	9 504-742-15 0.277 ac.	10 504-742-14 0.277 ac.	11 504-742-13 0.277 ac.	12 504-742-12 0.311 ac.		
13 504-742-07 0.285 ac.	14 504-742-08 0.311 ac.	15 504-742-09 0.311 ac.	16 504-742-10 0.277 ac.	17 504-742-11 0.343 ac.		
18 504-742-06 0.278 ac.	19 504-742-05 0.286 ac.	20 504-742-04 0.278 ac.	21 504-742-03 0.277 ac.	22 504-742-02 0.277 ac.	23 504-742-01 0.288 ac.	
24 504-741-08 0.279 ac.	25 504-741-09 0.277 ac.	26 504-741-10 0.276 ac.	27 504-741-11 0.287 ac.			