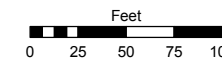
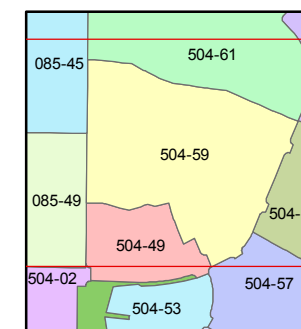
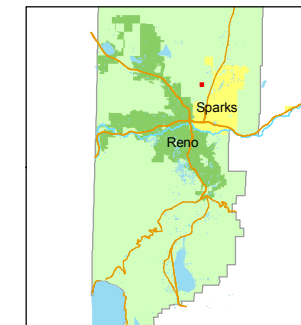


STATE OF NEVADA
WASHOE COUNTY
ASSESSOR'S OFFICE
Joshua G. Wilson, Assessor

1001 East Ninth Street
Building D
Reno, Nevada 89512
(775) 328-2231



1 inch = 100 feet



created by: DSR 11/01/2010

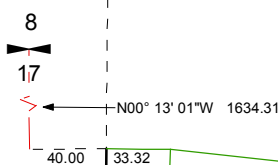
last updated: _____

area previously shown on map(s)
504-58

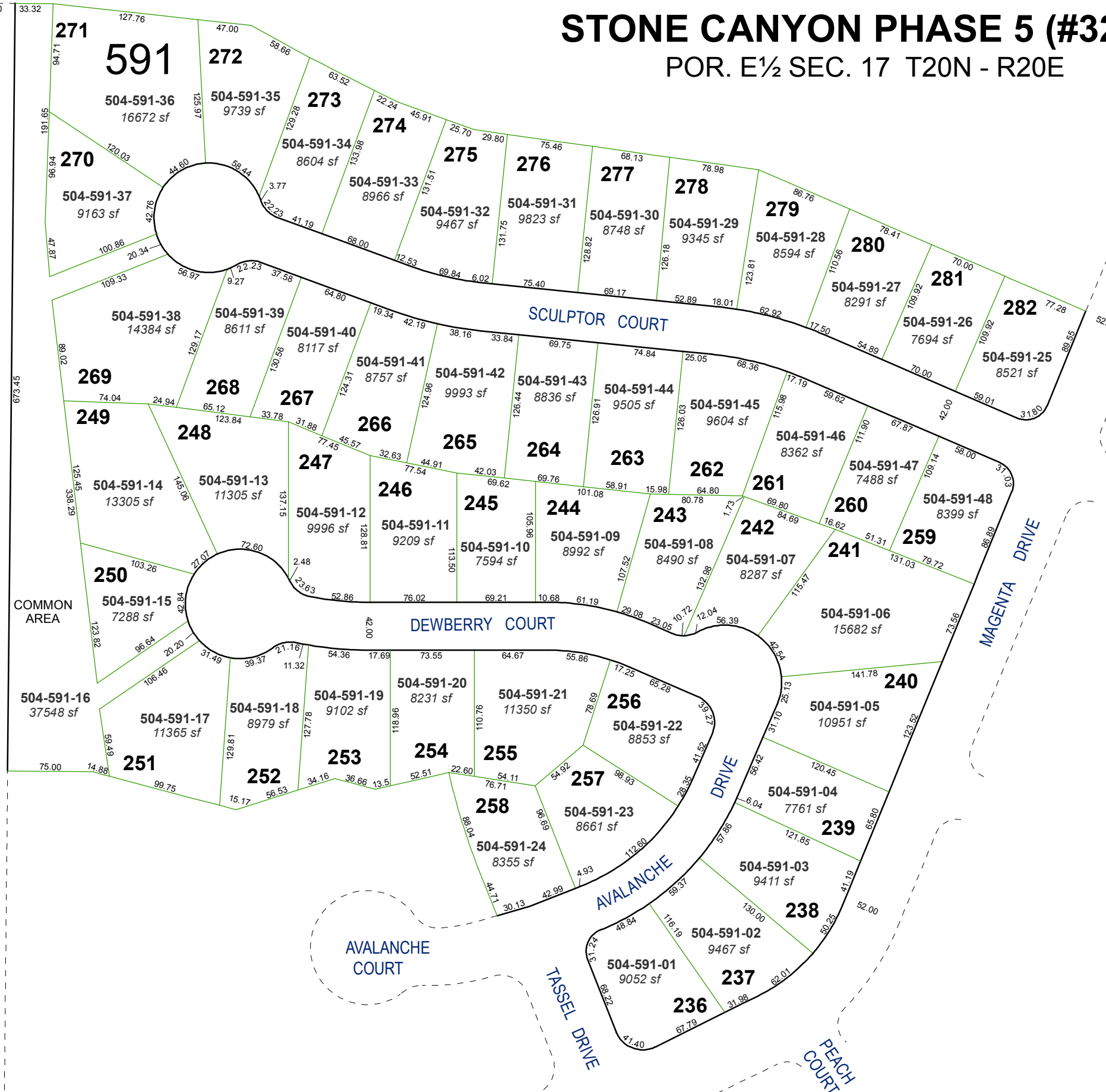
NOTE: This map was prepared for the use of the Washoe County Assessor for assessment and illustrative purposes only. It does not represent a survey of the premises. No liability is assumed as to the sufficiency or accuracy of the data delineated hereon.

STONE CANYON PHASE 5 (#3280)

POR. E 1/2 SEC. 17 T20N - R20E



KLONDIKE DRIVE



COMMON AREA

AVALANCHE COURT

TASSEL DRIVE

PEACH COURT

MAGENTA DRIVE