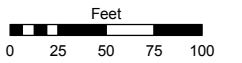


Assessor's Map Number

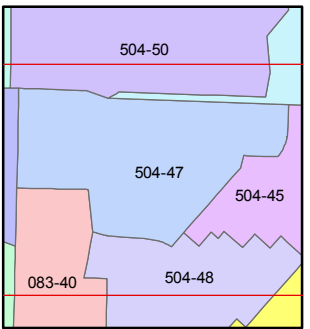
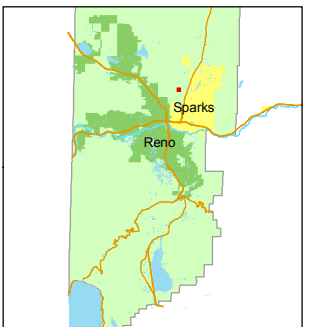
**504-47**

STATE OF NEVADA  
**WASHOE COUNTY**  
ASSESSOR'S OFFICE  
Joshua G. Wilson, Assessor

1001 East Ninth Street  
Building D  
Reno, Nevada 89512  
(775) 328-2231



1 inch = 100 feet



created by: DSR 10/25/2010

last updated: \_\_\_\_\_

area previously shown on map(s)

083-06

NOTE: This map was prepared for the use of the Washoe County Assessor for assessment and illustrative purposes only. It does not represent a survey of the premises. No liability is assumed as to the sufficiency or accuracy of the data delineated hereon.

17  
20

EAST FIFTH AVENUE

PARCEL A  
COMMON AREA

**473**

SUN MESA DRIVE

PARCEL B-1  
(Dedicated to Washoe County)  
R.S. 4970

**471**

SUN LANE

**472**

**(#4618)  
SUN MESA - PHASE 1**

PORTION OF NE 1/4 SECTION 20  
T20N - R20E

DETENTION POND  
MAINTENANCE EASE.

WHITEHORSE AVENUE

RISING RIDGE DRIVE

SUMMER SUN COURT

RAMA CIR.

KLONDIKE DRIVE

