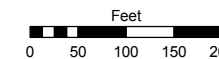
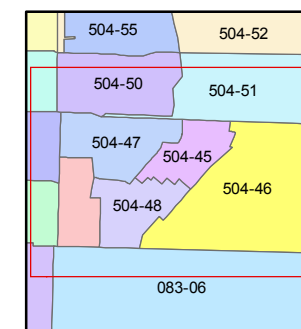
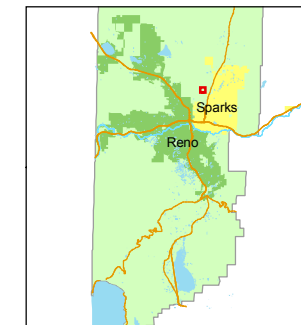


STATE OF NEVADA  
**WASHOE COUNTY**  
**ASSESSOR'S OFFICE**  
Joshua G. Wilson, Assessor

1001 East Ninth Street  
Building D  
Reno, Nevada 89512  
(775) 328-2231



1 inch = 200 feet



created by: DSR 10/25/2010

last updated: \_\_\_\_\_

area previously shown on map(s)

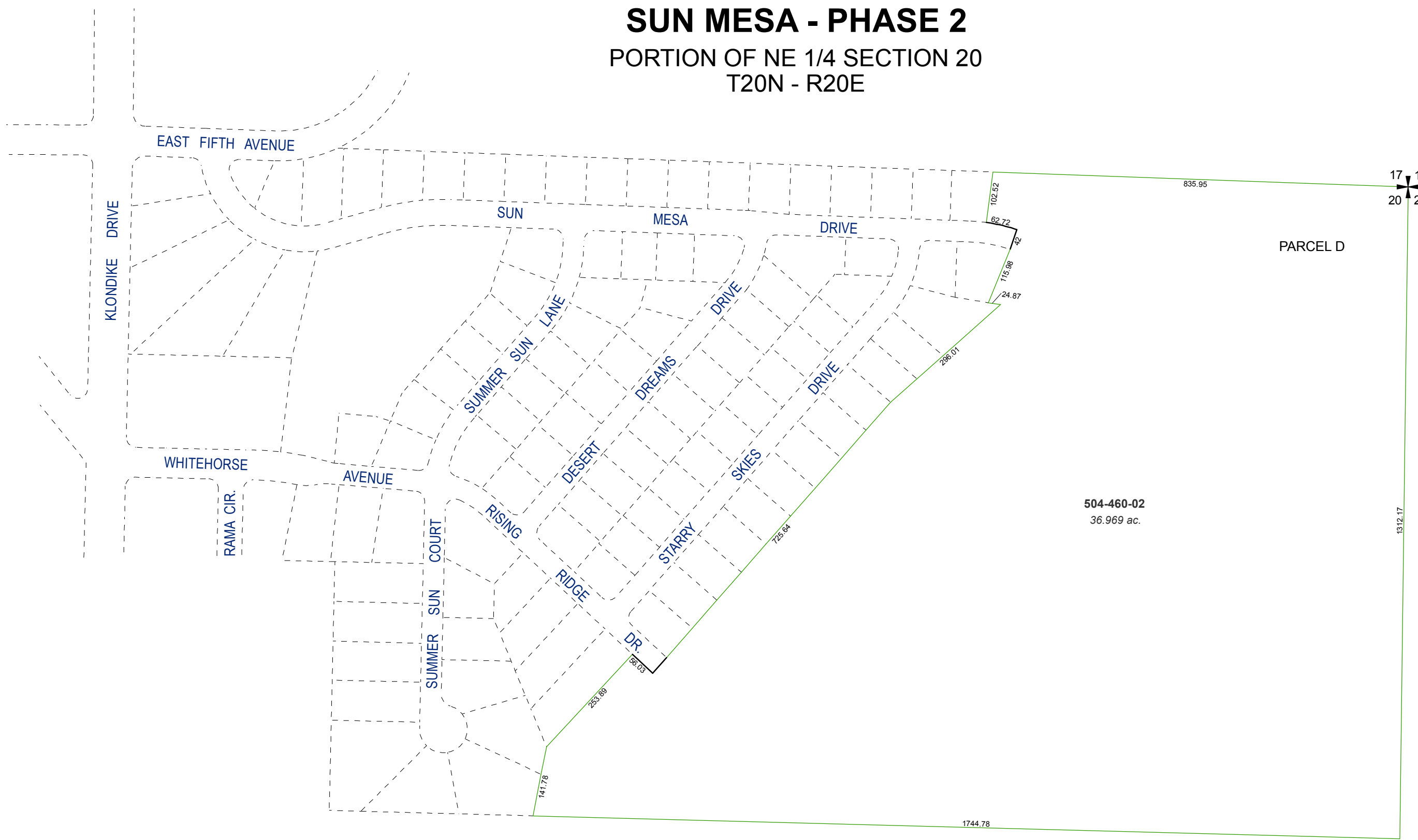
083-06

NOTE: This map was prepared for the use of the Washoe County Assessor for assessment and illustrative purposes only. It does not represent a survey of the premises. No liability is assumed as to the sufficiency or accuracy of the data delineated hereon.

**(#4780)**

**SUN MESA - PHASE 2**

PORTION OF NE 1/4 SECTION 20  
T20N - R20E



**504-460-02**  
36.969 ac.