

(#4780)
SUN MESA - PHASE 2
 A POR. OF NE 1/4 OF SEC. 20,
 T20N - R20E

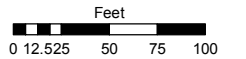
504-51

Assessor's Map Number

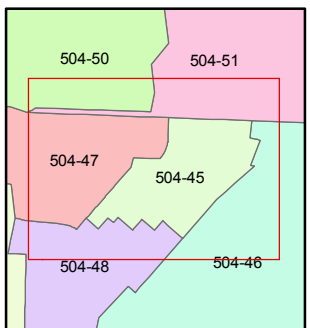
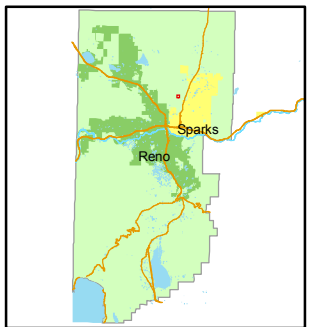
504-45

STATE OF NEVADA
WASHOE COUNTY
ASSESSOR'S OFFICE
 Joshua G. Wilson, Assessor

1001 East Ninth Street
 Building D
 Reno, Nevada 89512
 (775) 328-2231



1 inch = 100 feet



created by: NLH 2/16/2010

last updated: _____

area previously shown on map(s)

083-06

NOTE: This map was prepared for the use of the Washoe County Assessor for assessment and illustrative purposes only. It does not represent a survey of the premises. No liability is assumed as to the sufficiency or accuracy of the data delineated hereon.

