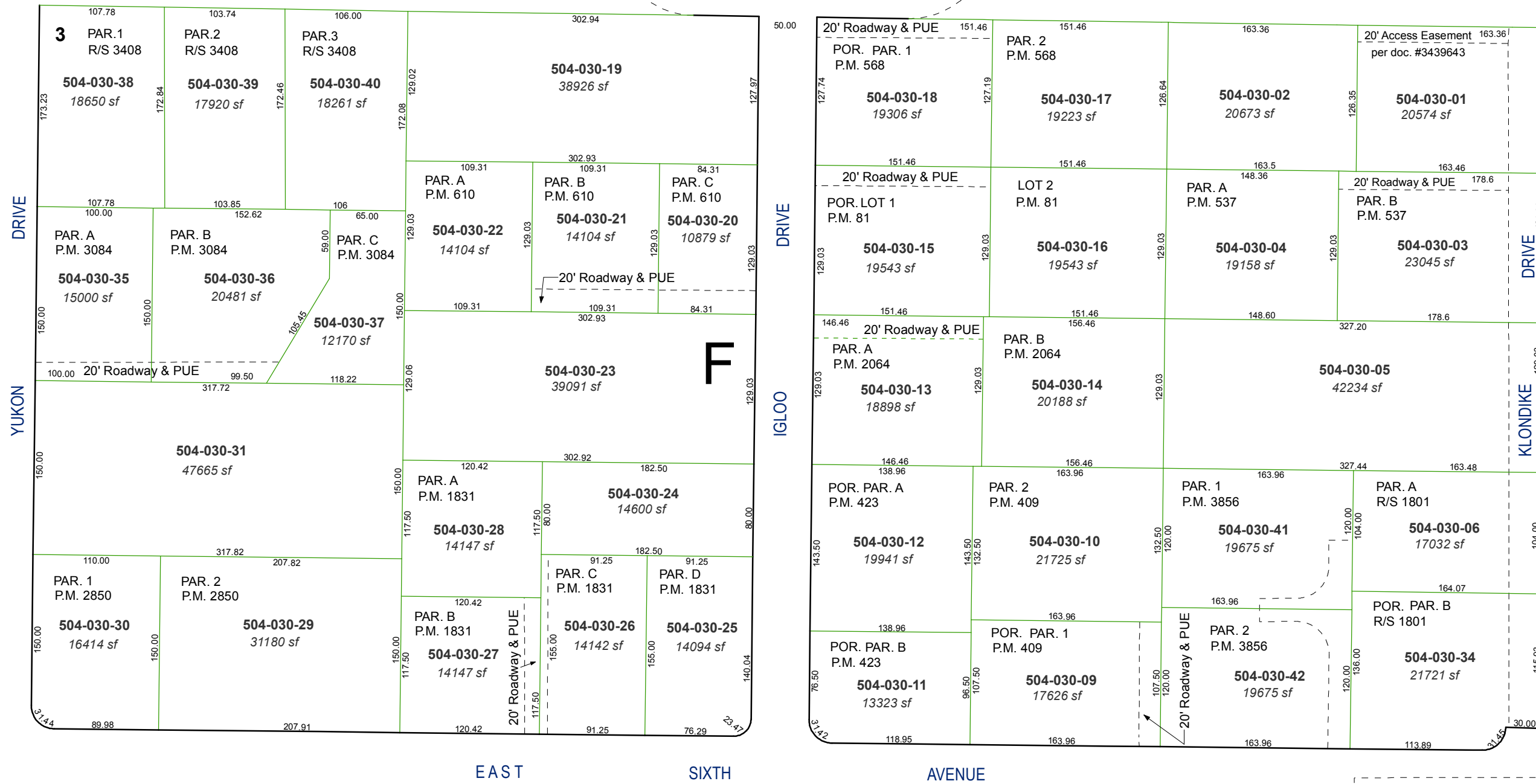


(# 573)
SUN VALLEY SUB. NO. 5
 S1/2 NE1/4 SW1/4 SEC 17 T20N - R20E

CHARJENE WAY

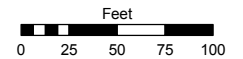


Assessor's Map Number

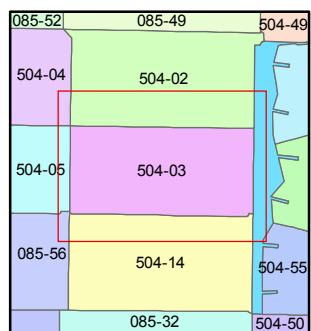
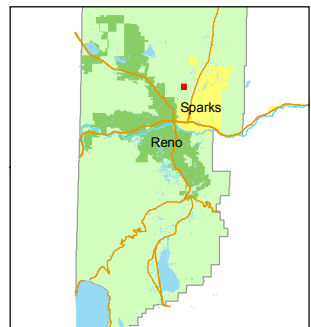
504-03

STATE OF NEVADA
WASHOE COUNTY
ASSESSOR'S OFFICE
 Joshua G. Wilson, Assessor

1001 East Ninth Street
 Building D
 Reno, Nevada 89512
 (775) 328-2231



1 inch = 100 feet



created by: DSR 10/20/2010

last updated: _____

area previously shown on map(s)

085-30

NOTE: This map was prepared for the use of the Washoe County Assessor for assessment and illustrative purposes only. It does not represent a survey of the premises. No liability is assumed as to the sufficiency or accuracy of the data delineated hereon.