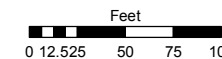


RETIRED

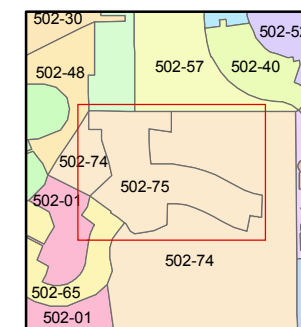
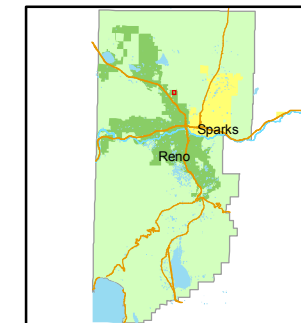
These parcels have been reverted to acreage - See 502-74.

STATE OF NEVADA
WASHOE COUNTY
ASSESSOR'S OFFICE
Joshua G. Wilson, Assessor

1001 East Ninth Street
Building D
Reno, Nevada 89512
(775) 328-2231



1 inch = 100 feet



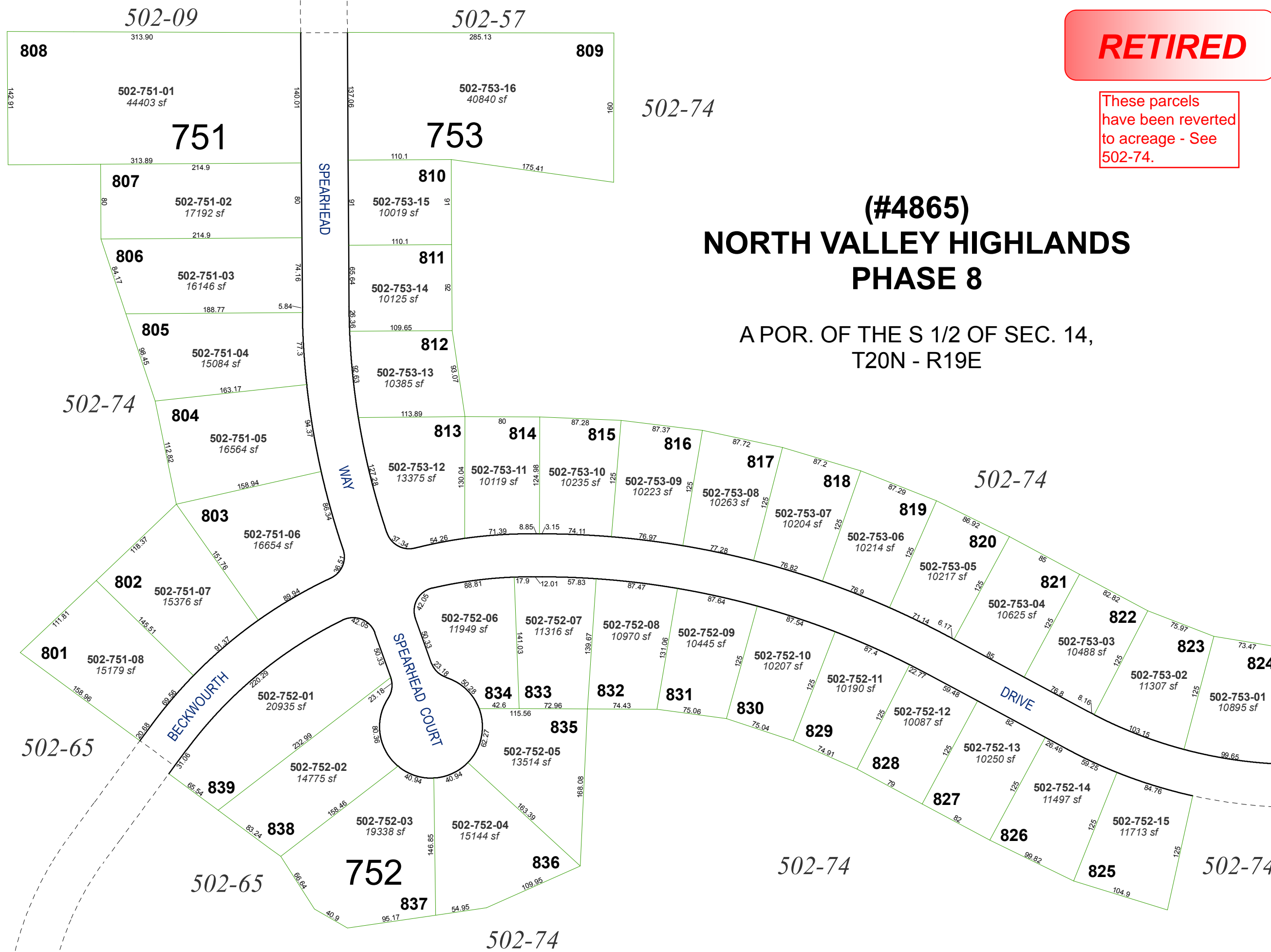
created by: NLH 6/16/2009

last updated: _____

area previously shown on map(s)

502-01

NOTE: This map was prepared for the use of the Washoe County Assessor for assessment and illustrative purposes only. It does not represent a survey of the premises. No liability is assumed as to the sufficiency or accuracy of the data delineated hereon.



#4865 NORTH VALLEY HIGHLANDS PHASE 8

A POR. OF THE S 1/2 OF SEC. 14,
T20N - R19E