

Assessor's Map Number

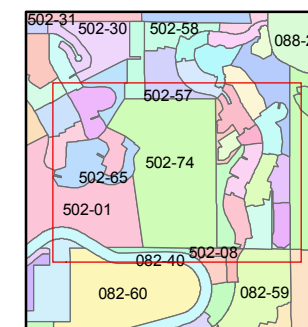
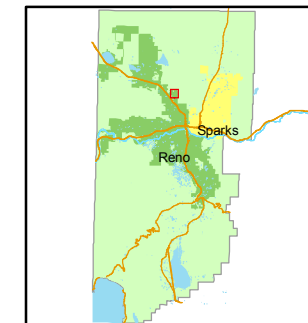
502-74

STATE OF NEVADA
WASHOE COUNTY
ASSESSOR'S OFFICE
Joshua G. Wilson, Assessor

1001 East Ninth Street
Building D
Reno, Nevada 89512
(775) 328-2231



1 inch = 300 feet



created by: NLH 6/16/2009

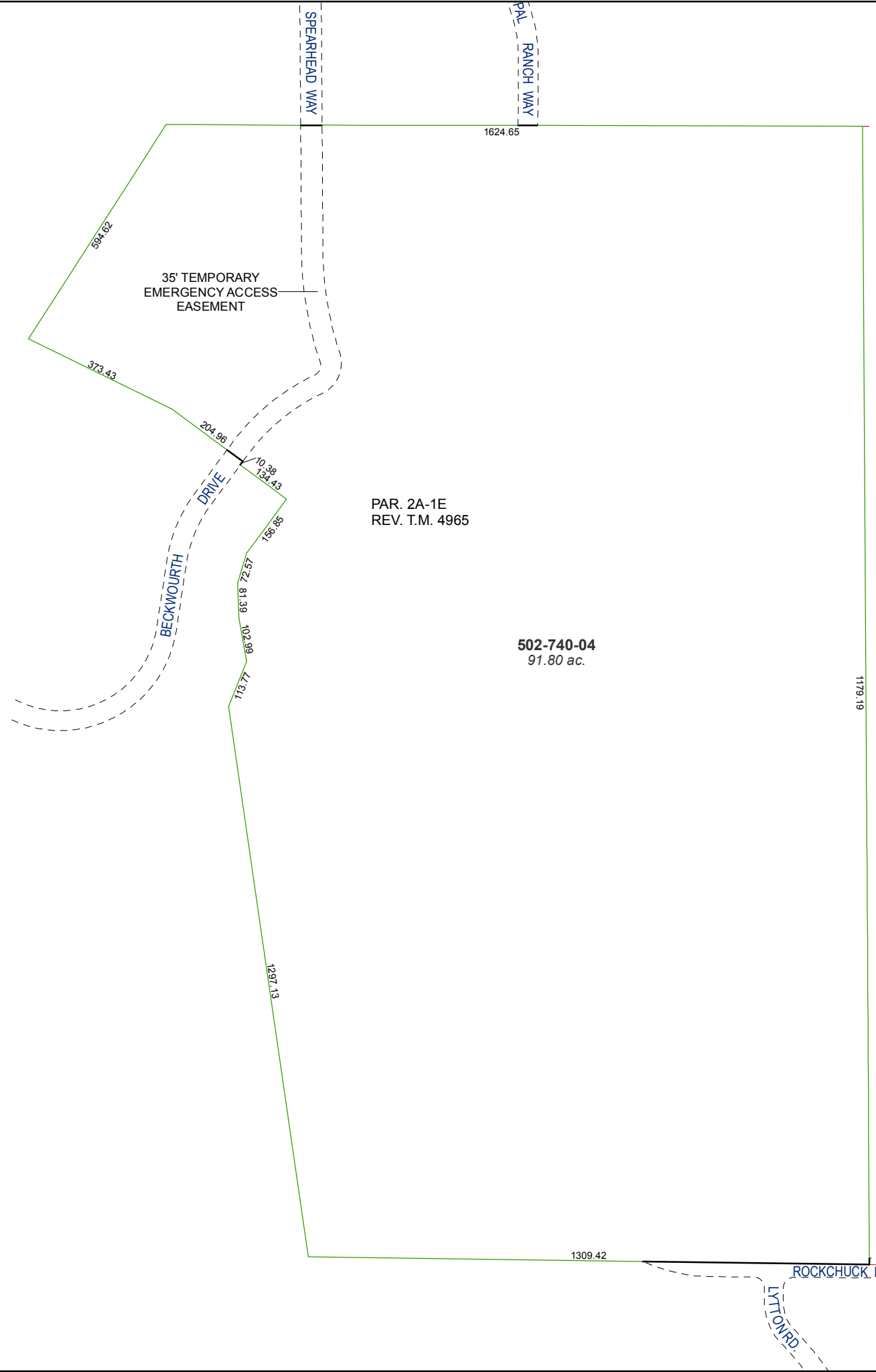
last updated: NLH 6/02/11 NLH 8/11/11

area previously shown on map(s)

NOTE: This map was prepared for the use of the Washoe County Assessor for assessment and illustrative purposes only. It does not represent a survey of the premises. No liability is assumed as to the sufficiency or accuracy of the data delineated herein.

(#4965) REVERSION TO ACREAGE

A POR. OF THE S 1/2 OF SEC. 14 T20N - R19E



PAR. 2A-1E
REV. T.M. 4965

502-740-04
91.80 ac.

ROCKCHUCK ROAD

LITTLE RD.

35' TEMPORARY
EMERGENCY ACCESS
EASEMENT

BECKWOURTH
DRIVE

SPEARHEAD WAY

PAUL RANCH WAY

14 13
23 24