

502-73

502-72

502-70

502-72

502-70

A.E., S.S.E., S.D.E.,
W.L.E., AND M.A.E.

(#4790)

LADERA RANCH - PHASE 1

A POR. OF THE W 1/2 OF SEC. 13
T20N - R19E

731

732

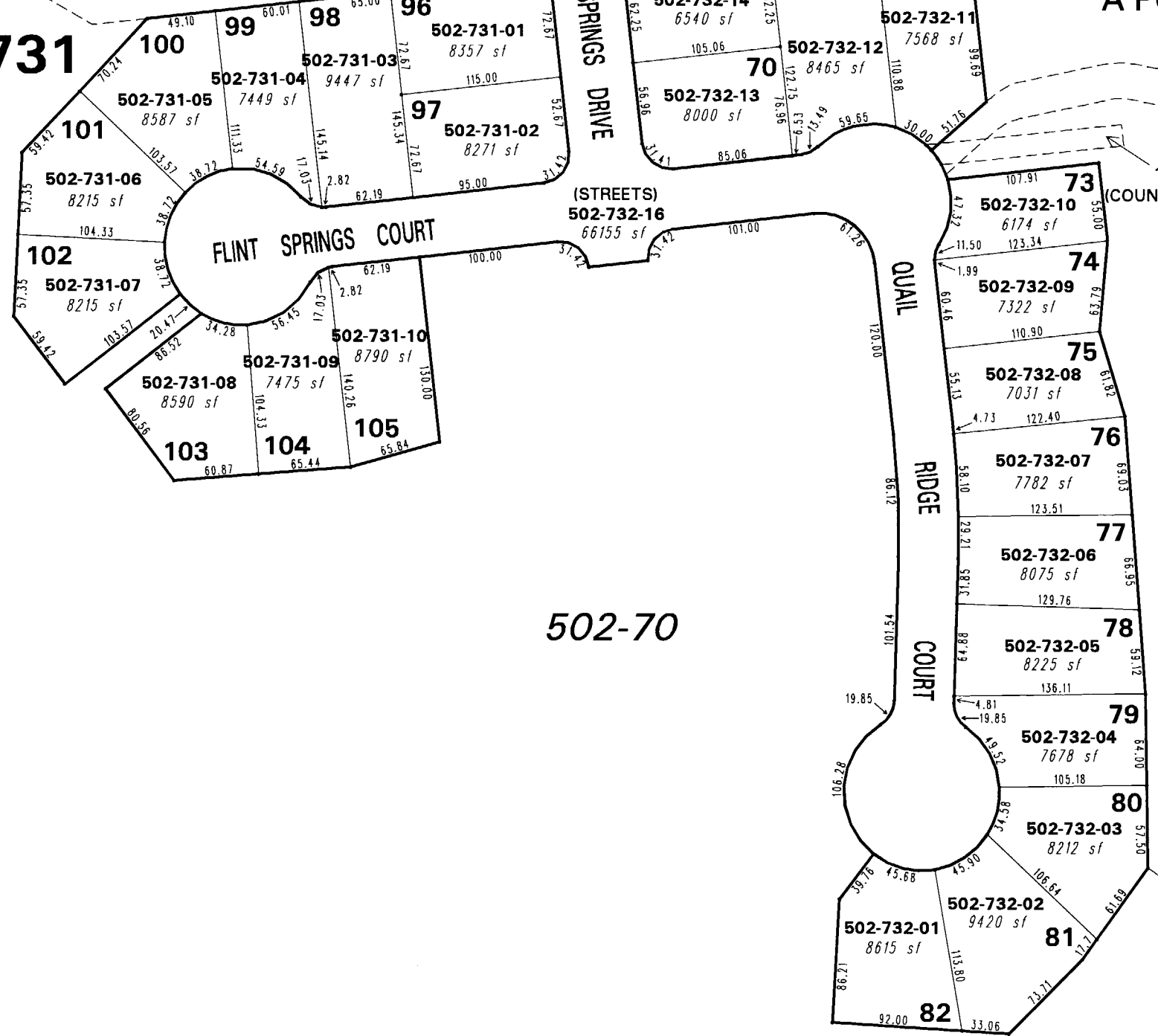
FLINT SPRINGS DRIVE

FLINT SPRINGS COURT

QUAIL RIDGE COURT

502-70

502-70



15' S.D.E.
(COUNTY MAINTAINED)

25' S.S.E., P.A.E.,
AND M.A.E.



1" = 100'



- A.E. = ACCESS EASEMENT
- M.A.E. = MAINTENANCE ACCESS EASEMENT
- P.A.E. = PEDESTRIAN ACCESS EASEMENT
- S.D.E. = STORM DRAIN EASEMENT
- S.S.E. = SANITARY SEWER EASEMENT
- W.L.E. = WATER LINE EASEMENT

NOTE: This map is prepared for the use of the Washoe County Assessor for assessment and illustrative purposes only. It does not represent a survey of the premises. No liability is assumed as to the sufficiency or the accuracy of the data delineated hereon.

Office of Washoe County Assessor, Nevada - Joshua G. Wilson

This area previously shown on 082-47

NOTE: Areas of parcels which are less than 2 acres are shown in square feet.

Drawn by NLH 06/27/07
 Revised _____