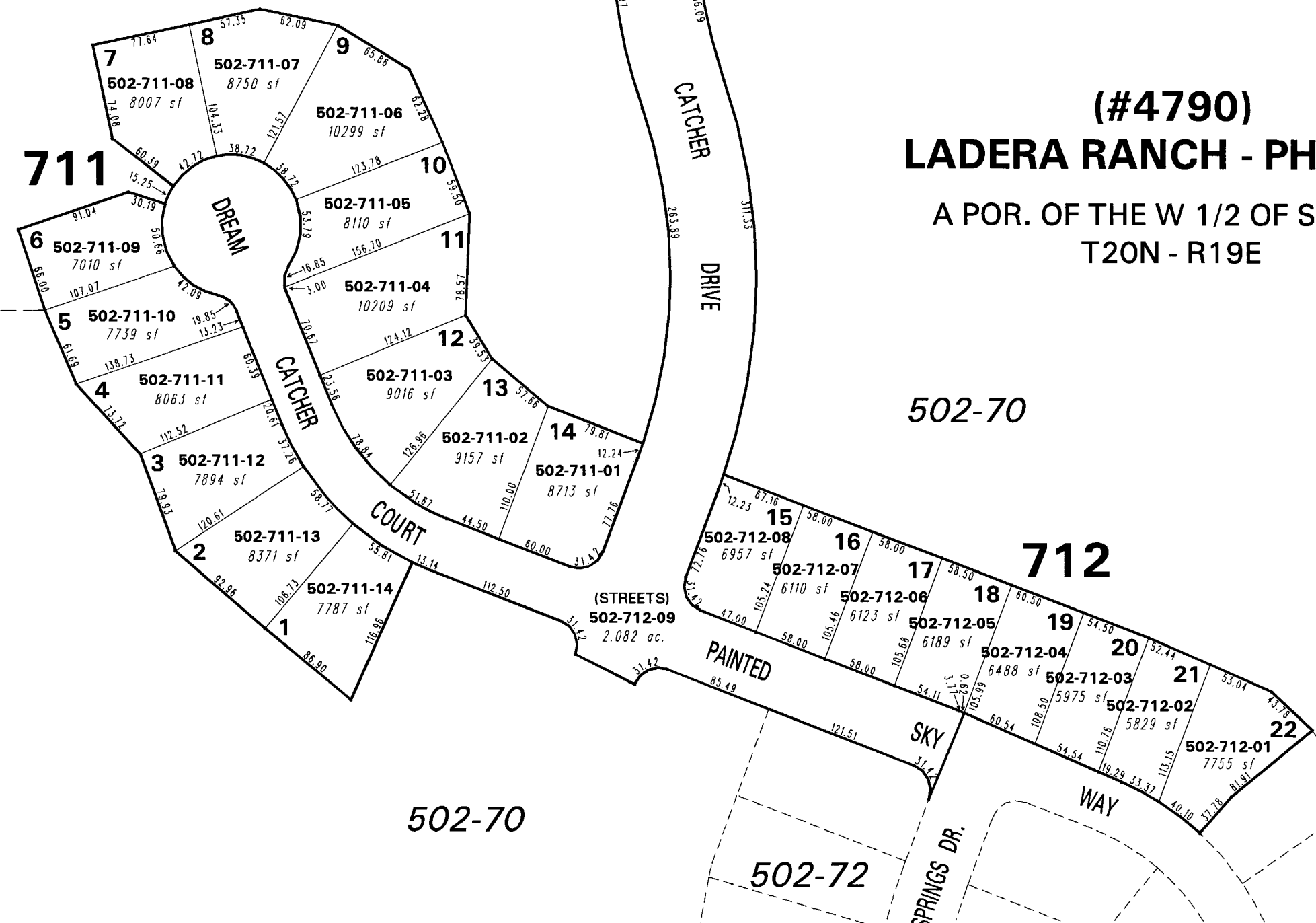


E. GOLDEN VALLEY RD.

W. SEVENTH AVE.



(#4790)
LADERA RANCH - PHASE 1
 A POR. OF THE W 1/2 OF SEC. 13
 T20N - R19E

NOTE: This map is prepared for the use of the Washoe County Assessor for assessment and illustrative purposes only. It does not represent a survey of the premises. No liability is assumed as to the sufficiency or the accuracy of the data delineated hereon.

Office of Washoe County Assessor, Nevada - Joshua G. Wilson

This area previously shown on 082-47

NOTE: Areas of parcels which are less than 2 acres are shown in square feet.

Drawn by NLH 06/26/07
 Revised _____