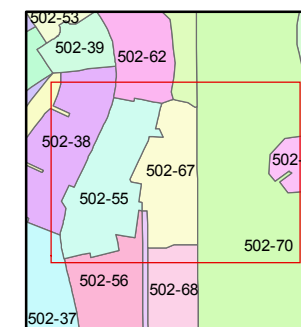
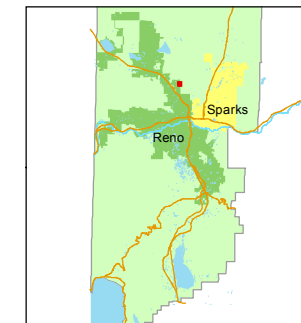




1 inch = 100 feet



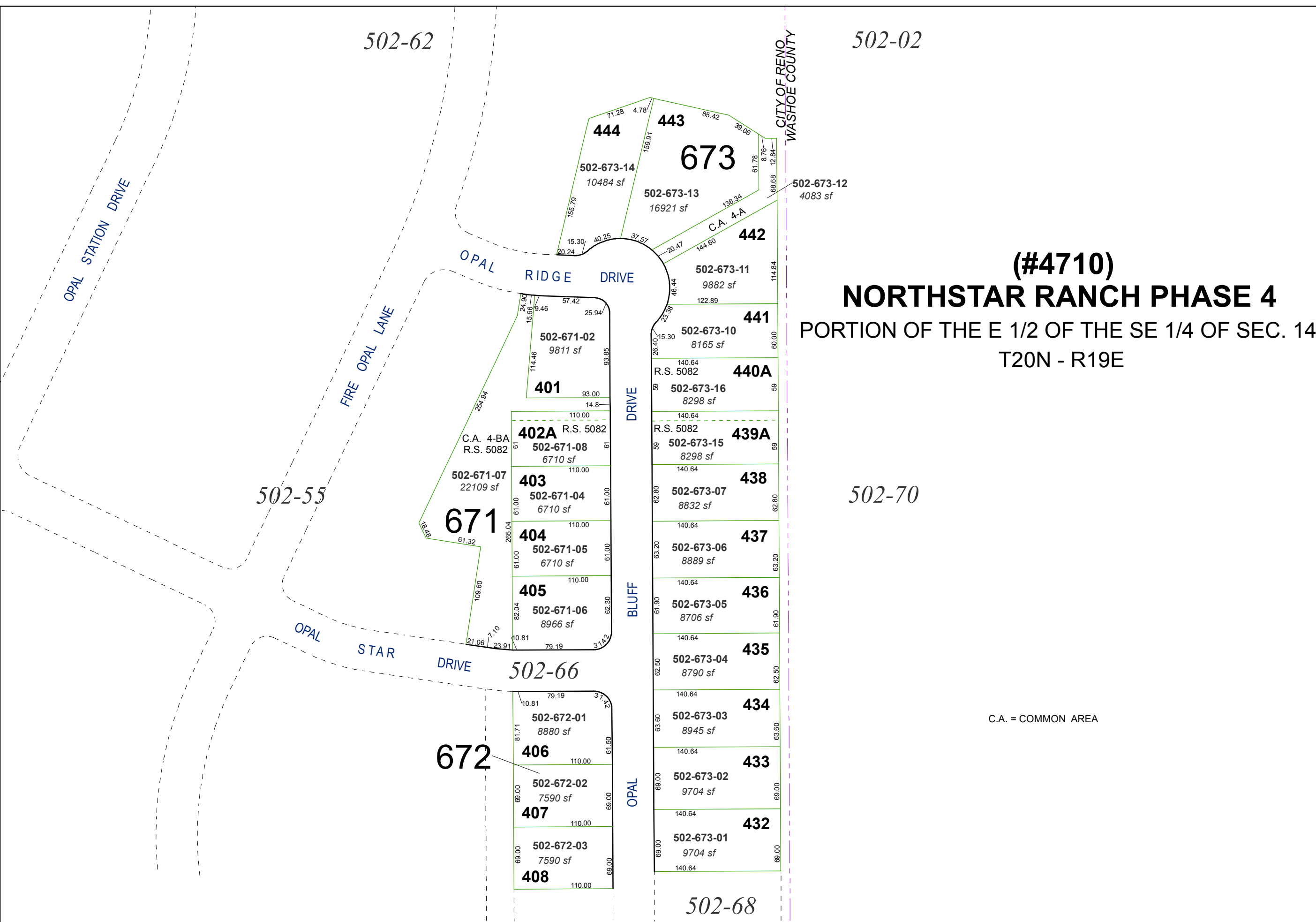
created by: NLH 6/17/2009

last updated: CFB 09/10/2013

area previously shown on map(s)

502-55

NOTE: This map was prepared for the use of the Washoe County Assessor for assessment and illustrative purposes only. It does not represent a survey of the premises. No liability is assumed as to the sufficiency or accuracy of the data delineated hereon.



CITY OF RENO
WASHOE COUNTY

502-673-12
4083 sf

502-673-16
8298 sf

502-673-15
8298 sf

502-673-07
8832 sf

502-673-06
8889 sf

502-673-05
8706 sf

502-673-04
8790 sf

502-673-03
8945 sf

502-673-02
9704 sf

502-673-01
9704 sf

502-673-14
10484 sf

502-673-13
16921 sf

502-673-11
9882 sf

502-671-02
9811 sf

502-671-08
6710 sf

502-671-04
6710 sf

502-671-05
6710 sf

502-671-06
8966 sf

502-672-01
8880 sf

502-672-02
7590 sf

502-672-03
7590 sf

502-672-03
7590 sf

502-672-03
7590 sf

502-672-03
7590 sf

502-672-03
7590 sf

502-672-03
7590 sf

502-672-03
7590 sf

502-672-03
7590 sf

502-672-03
7590 sf

502-672-03
7590 sf

502-672-03
7590 sf

502-672-03
7590 sf

502-672-03
7590 sf

502-672-03
7590 sf

502-672-03
7590 sf

502-672-03
7590 sf

502-672-03
7590 sf

502-672-03
7590 sf

502-672-03
7590 sf

502-672-03
7590 sf

502-672-03
7590 sf

502-672-03
7590 sf

502-672-03
7590 sf

502-672-03
7590 sf

502-672-03
7590 sf

502-672-03
7590 sf

502-672-03
7590 sf

502-672-03
7590 sf

502-672-03
7590 sf

502-672-03
7590 sf

502-672-03
7590 sf

502-672-03
7590 sf

502-672-03
7590 sf

502-672-03
7590 sf

502-672-03
7590 sf

502-672-03
7590 sf

502-672-03
7590 sf

502-672-03
7590 sf

502-672-03
7590 sf

502-672-03
7590 sf

502-672-03
7590 sf

502-672-03
7590 sf

502-672-03
7590 sf

502-672-03
7590 sf

502-672-03
7590 sf

502-672-03
7590 sf

502-672-03
7590 sf

502-672-03
7590 sf

502-672-03
7590 sf

502-672-03
7590 sf

502-672-03
7590 sf

502-672-03
7590 sf

502-672-03
7590 sf

502-672-03
7590 sf

502-672-03
7590 sf

502-672-03
7590 sf

502-672-03
7590 sf

502-672-03
7590 sf

502-672-03
7590 sf

502-672-03
7590 sf

502-672-03
7590 sf

502-672-03
7590 sf

502-672-03
7590 sf

502-672-03
7590 sf

502-672-03
7590 sf

502-672-03
7590 sf

502-672-03
7590 sf

502-672-03
7590 sf

502-672-03
7590 sf

502-672-03
7590 sf

502-672-03
7590 sf

502-672-03
7590 sf

502-672-03
7590 sf

502-672-03
7590 sf

502-672-03
7590 sf

502-672-03
7590 sf

502-672-03
7590 sf

502-672-03
7590 sf

502-672-03
7590 sf

502-672-03
7590 sf

502-672-03
7590 sf

502-672-03
7590 sf

502-672-03
7590 sf

502-672-03
7590 sf

502-672-03
7590 sf

502-672-03
7590 sf

502-672-03
7590 sf

502-672-03
7590 sf

502-672-03
7590 sf

502-672-03
7590 sf

502-672-03
7590 sf

502-672-03
7590 sf

502-672-03
7590 sf

502-672-03
7590 sf

502-672-03
7590 sf

502-672-03
7590 sf

502-672-03
7590 sf

502-672-03
7590 sf

502-672-03
7590 sf

502-672-03
7590 sf

502-672-03
7590 sf

502-672-03
7590 sf

502-672-03
7590 sf

502-672-03
7590 sf

502-672-03
7590 sf

502-672-03
7590 sf

502-672-03
7590 sf

502-672-03
7590 sf

502-672-03
7590 sf

502-672-03
7590 sf

502-672-03
7590 sf

502-672-03
7590 sf

502-672-03
7590 sf

502-672-03
7590 sf

502-672-03
7590 sf

502-672-03
7590 sf

502-672-03
7590 sf

502-672-03
7590 sf

502-672-03
7590 sf

502-672-03
7590 sf

502-672-03
7590 sf

502-672-03
7590 sf

502-672-03
7590 sf

502-672-03
7590 sf

502-672-03
7590 sf

502-672-03
7590 sf

502-672-03
7590 sf

502-672-03
7590 sf

502-672-03
7590 sf

C.A. = COMMON AREA