

502-15

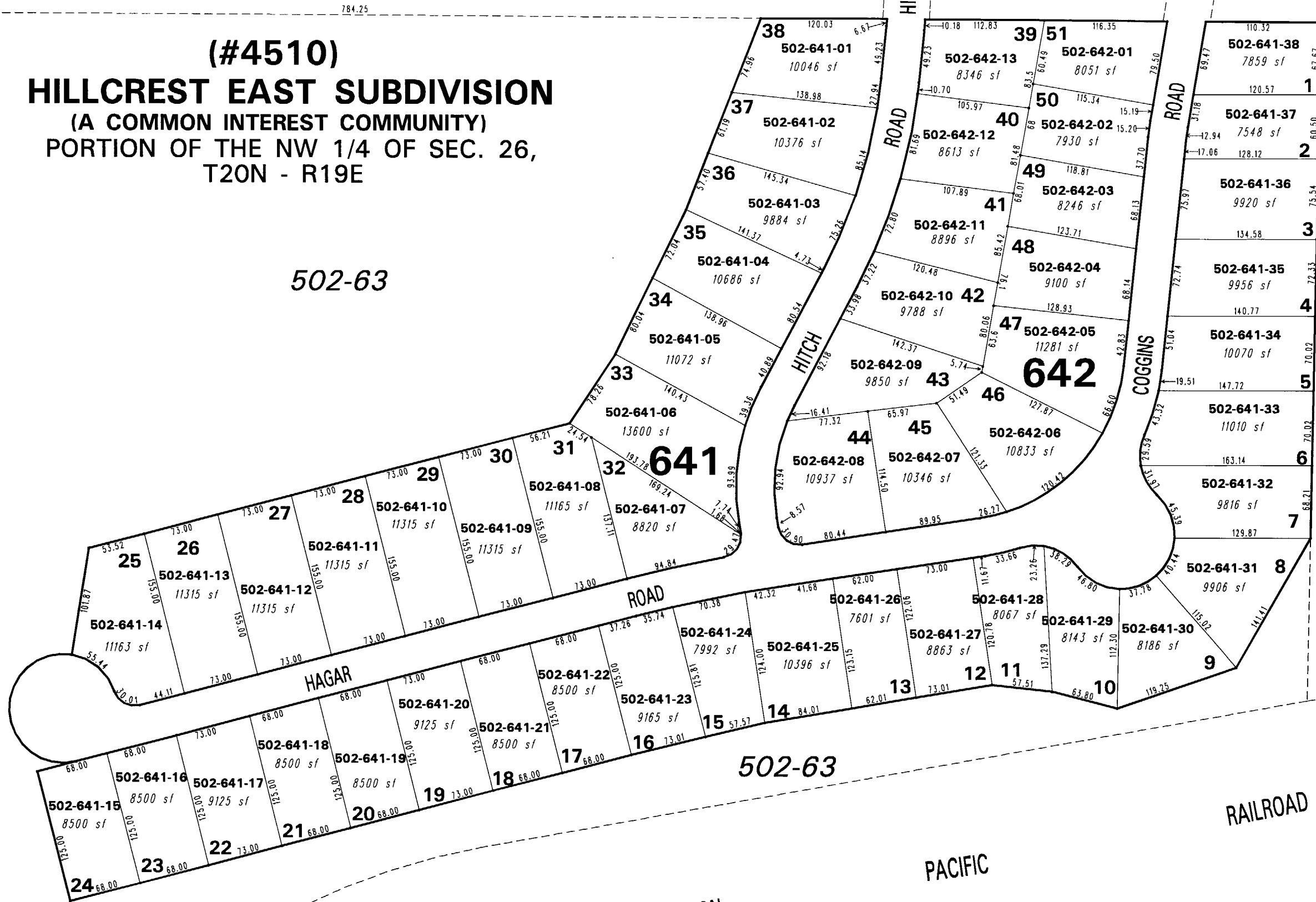
502-35

502-34

502-63

502-63

(#4510)
HILLCREST EAST SUBDIVISION
 (A COMMON INTEREST COMMUNITY)
 PORTION OF THE NW 1/4 OF SEC. 26,
 T20N - R19E



22 23
27 26

784.25

ORCA

WAY

ORCA

WAY

HITCH RD.

ROAD

ROAD

COGGINS

HAGAR

ROAD

RAILROAD

PACIFIC

UNION



1" = 100'



NOTE: This map is prepared for the use of the Washoe County Assessor for assessment and illustrative purposes only. It does not represent a survey of the premises. No liability is assumed as to the sufficiency or the accuracy of the data delineated hereon.

Office of Washoe County Assessor, Nevada - Joshua G. Wilson
 003-83

This area previously shown on 003-07

NOTE: Areas of parcels which are less than 2 acres are shown in square feet.

Drawn by PK 08/30/05
 Revised PK 2/13/06 JL 8/21/07