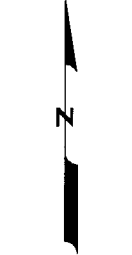
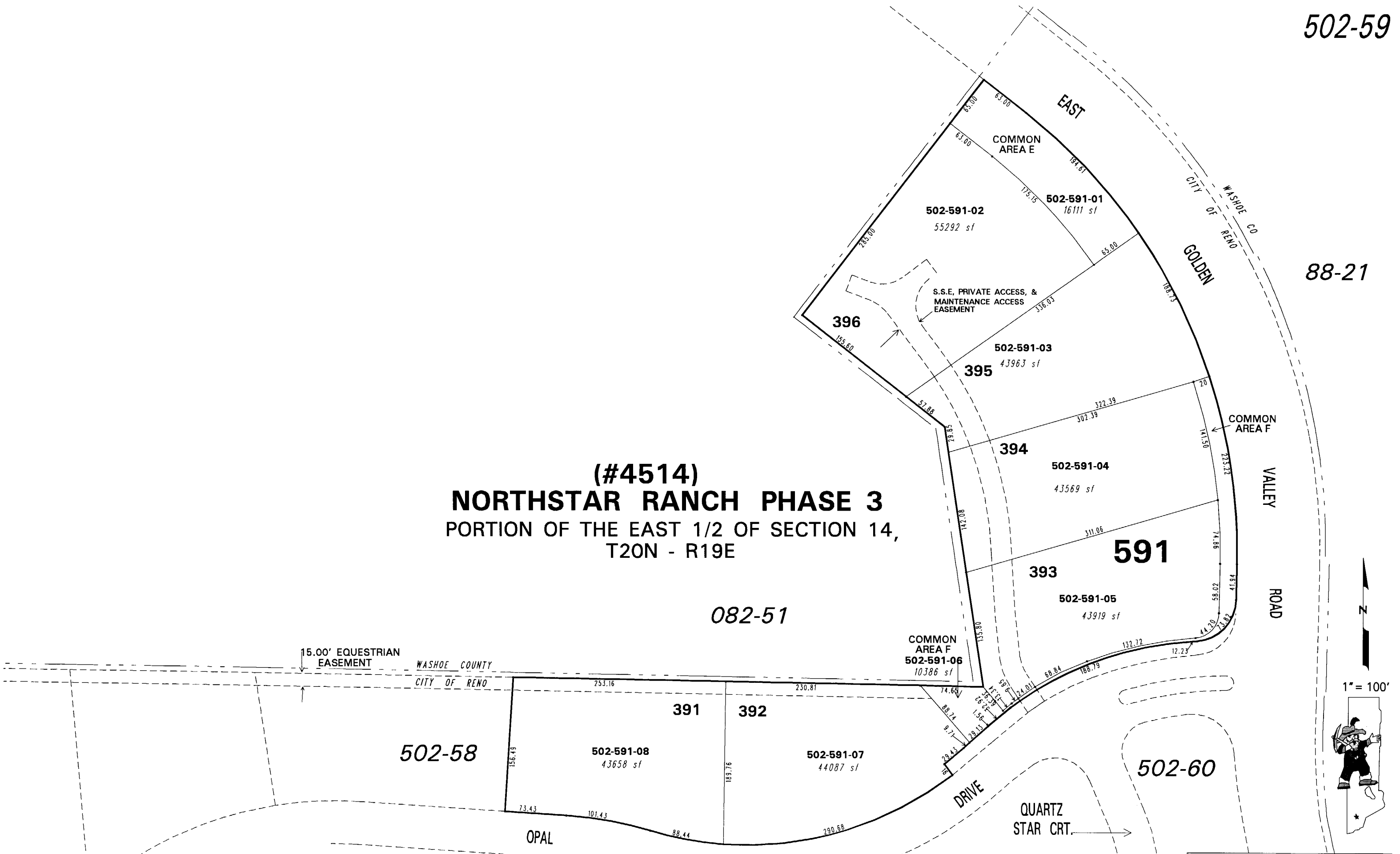


**(#4514)
NORTHSTAR RANCH PHASE 3
PORTION OF THE EAST 1/2 OF SECTION 14,
T20N - R19E**

082-51



1" = 100'



NOTE: This map is prepared for the use of the Washoe County Assessor for assessment and illustrative purposes only. It does not represent a survey of the premises. No liability is assumed as to the sufficiency or the accuracy of the data delineated hereon.

502-42
Office of Washoe County Assessor, Nevada - Joshua G. Wilson

This area previously shown on 502-02
NOTE: Areas of parcels which are less than 2 acres are shown in square feet.

Drawn by PK 08/09/05
Revised PK 9/19/05 NLH 8/24/08
NLH 5/14/09