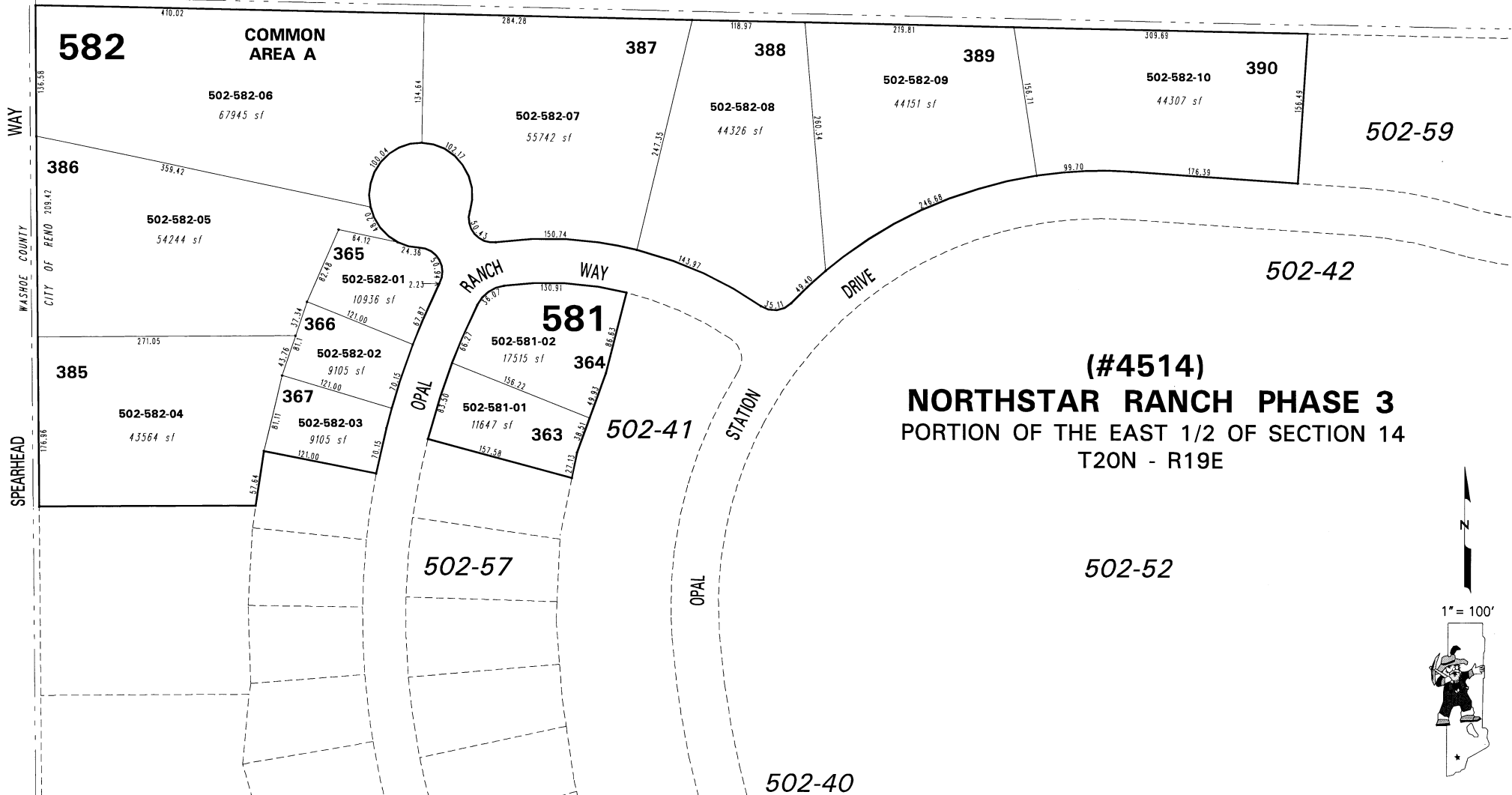
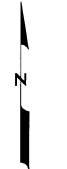


082-51



**(#4514)**  
**NORTHSTAR RANCH PHASE 3**  
 PORTION OF THE EAST 1/2 OF SECTION 14  
 T20N - R19E



1" = 100'



NOTE: This map is prepared for the use of the Washoe County Assessor for assessment and illustrative purposes only. It does not represent a survey of the premises. No liability is assumed as to the sufficiency or the accuracy of the data delineated hereon.

Office of Washoe County Assessor, Nevada - Joshua G. Wilson

This area previously shown on 502-02

NOTE: Areas of parcels which are less than 2 acres are shown in square feet.

Drawn by PK 08/10/05  
 Revised NLH 9/24/08